

# UPDATE ON NEVADA MINERAL PRODUCTION AND EXPLORATION



**Alan R. Coyner**  
Nevada Division of Minerals  
([minerals.state.nv.us](http://minerals.state.nv.us))



With contributions by  
**Jonathan G. Price**  
Nevada Bureau of Mines and Geology  
([www.nbmng.unr.edu](http://www.nbmng.unr.edu))

# THE MAIN POINT

## 10 Year Gold

High 1900.30 Low 320.00



Nevada is a really great place to explore for and mine gold - and many other mineral commodities.

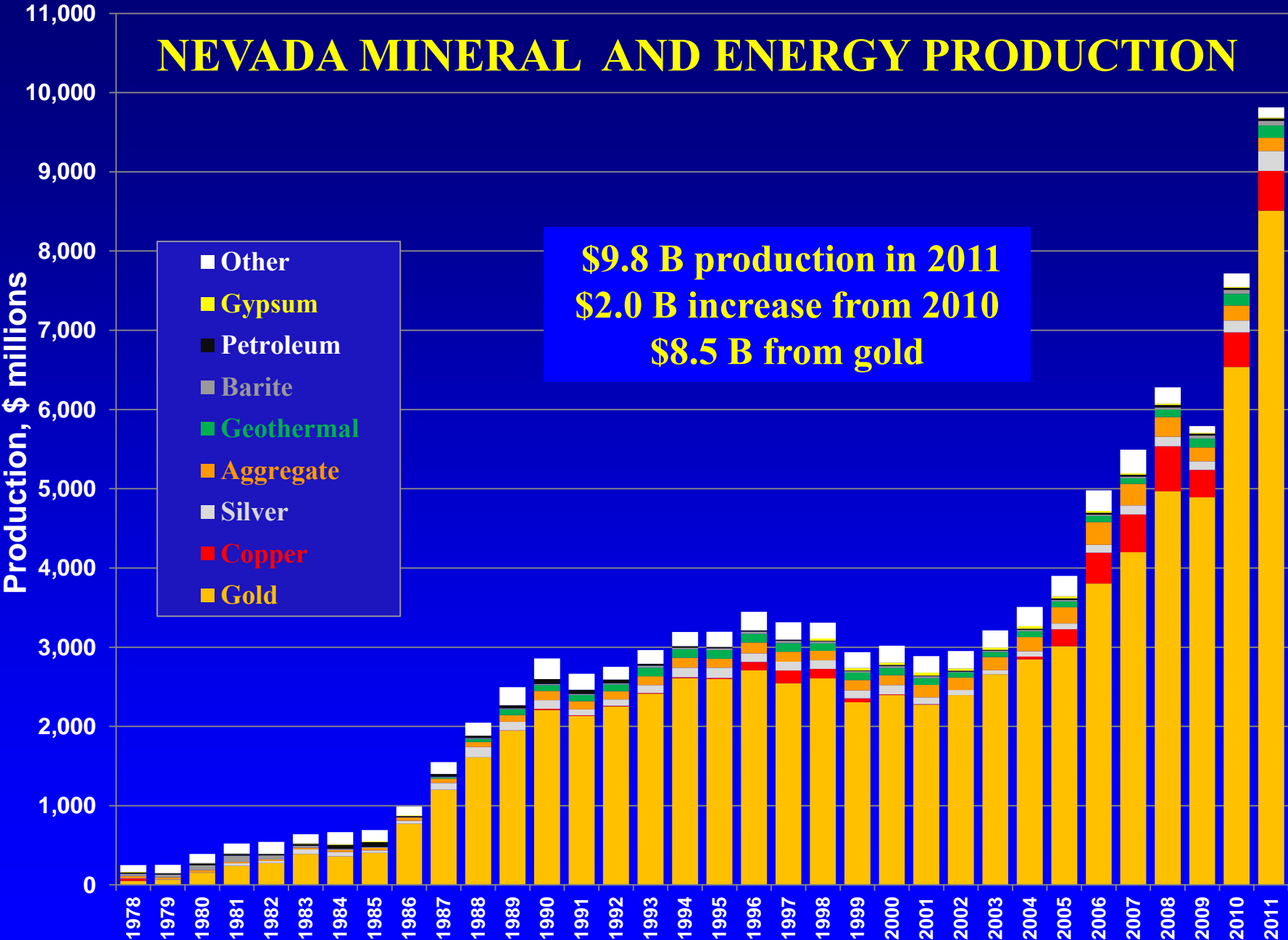
[www.kitco.com](http://www.kitco.com)

Based on New York Close

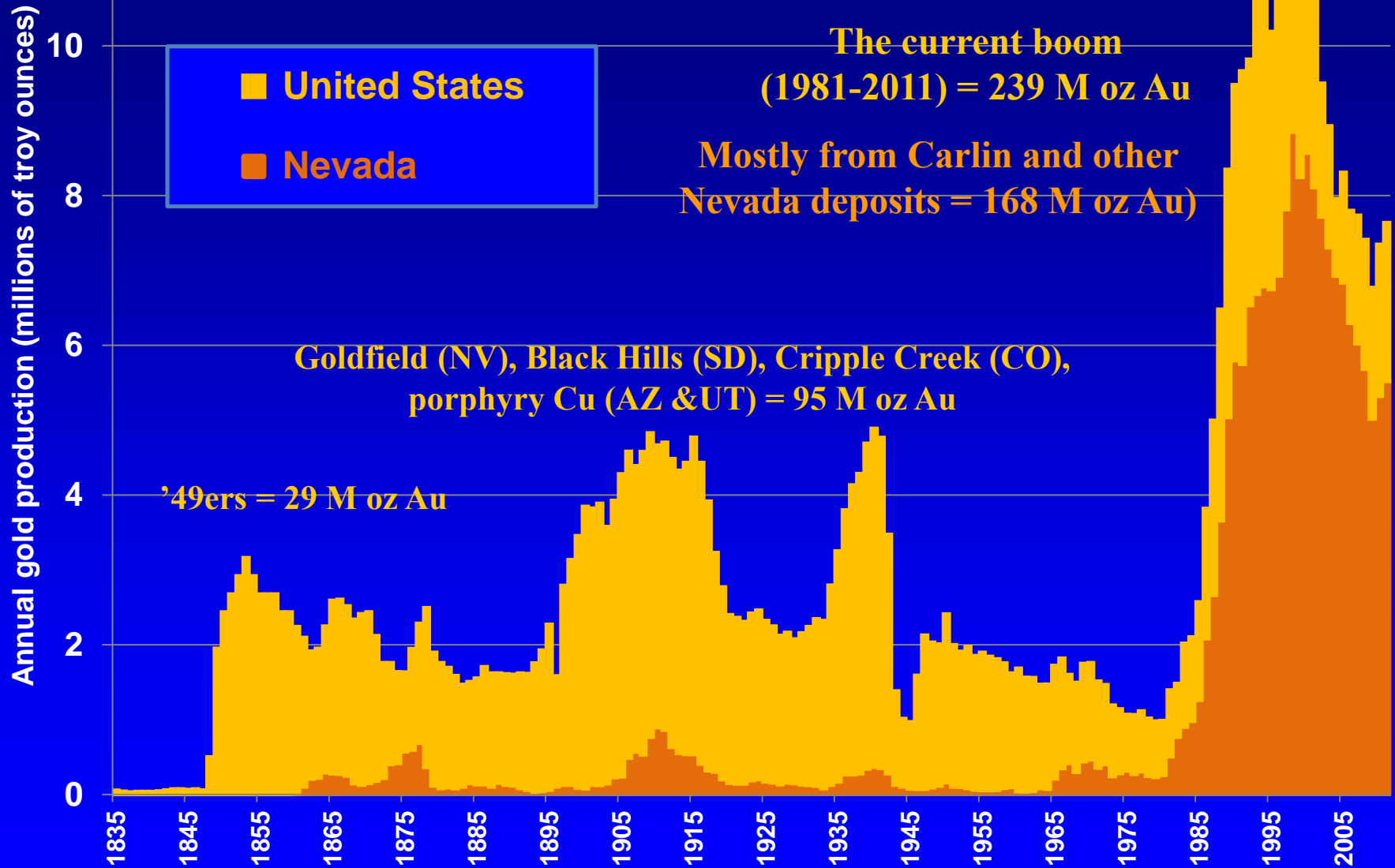
# NEVADA MINING INFO

- **Major Mines of Nevada**
  - NDOM (<http://minerals.state.nv.us>)
- **Nevada Exploration Survey**
  - NDOM and NBMG
- **The Nevada Mineral Industry**
  - NBMG ([www.nbmng.unr.edu](http://www.nbmng.unr.edu))
- **Economic Overview of the Nevada Mining Industry**
  - NvMA ([www.nevadamining.org](http://www.nevadamining.org))

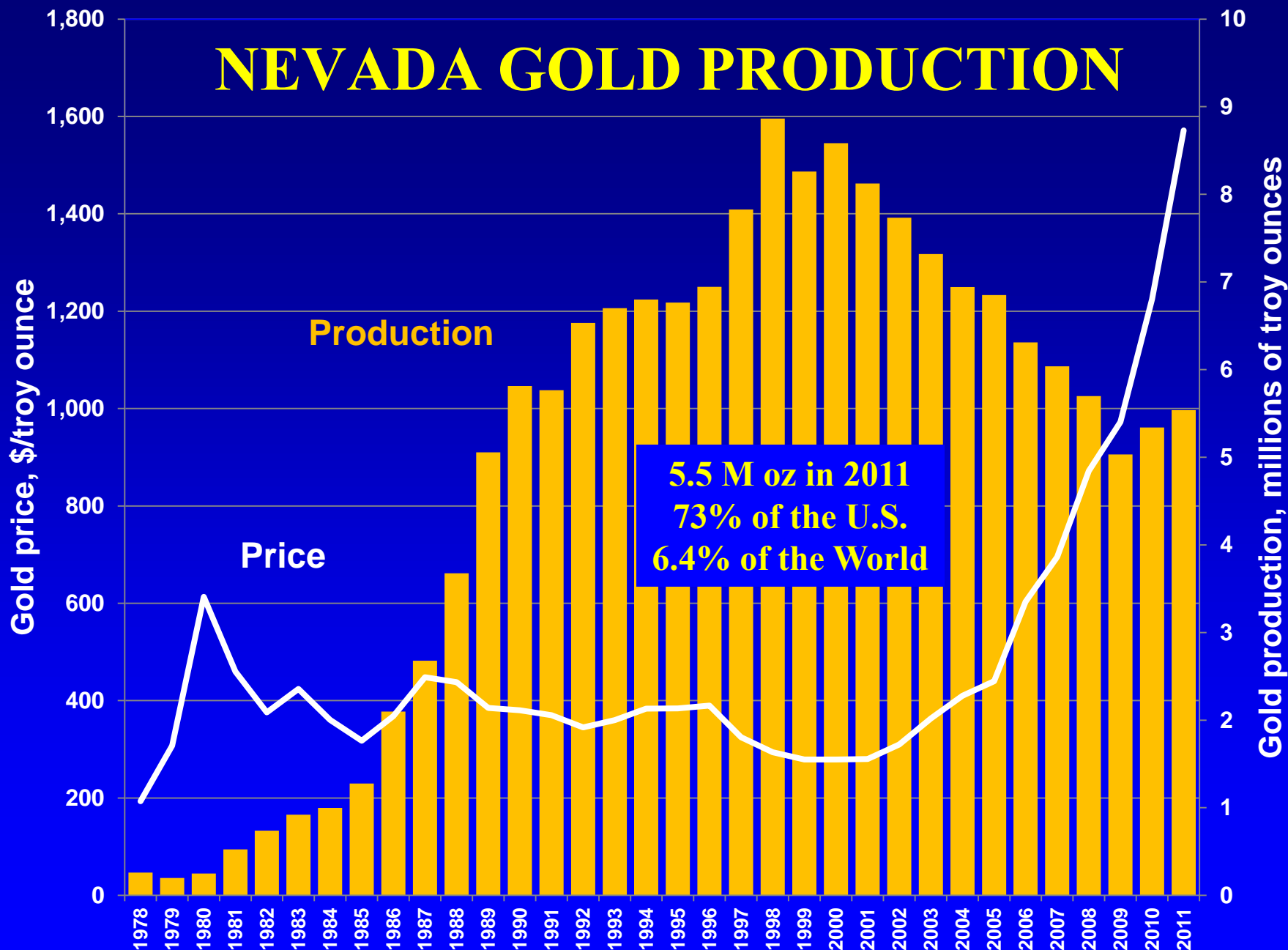
# NEVADA MINERAL AND ENERGY PRODUCTION



# GOLD PRODUCTION 1835-2011



# NEVADA GOLD PRODUCTION



# NEVADA VS. THE WORLD 2011

	Country	Gold Production (metric tons)
<b>1</b>	<b>China</b>	<b>355</b>
<b>2</b>	<b>Australia</b>	<b>270</b>
<b>3</b>	<b>United States</b>	<b>237</b>
<b>4</b>	<b>Russia</b>	<b>200</b>
<b>5</b>	<b>South Africa</b>	<b>190</b>
<b>6</b>	<b>NEVADA</b>	<b>172</b>
<b>7</b>	<b>Peru</b>	<b>150</b>
	<b>WORLD</b>	<b>2,700</b>

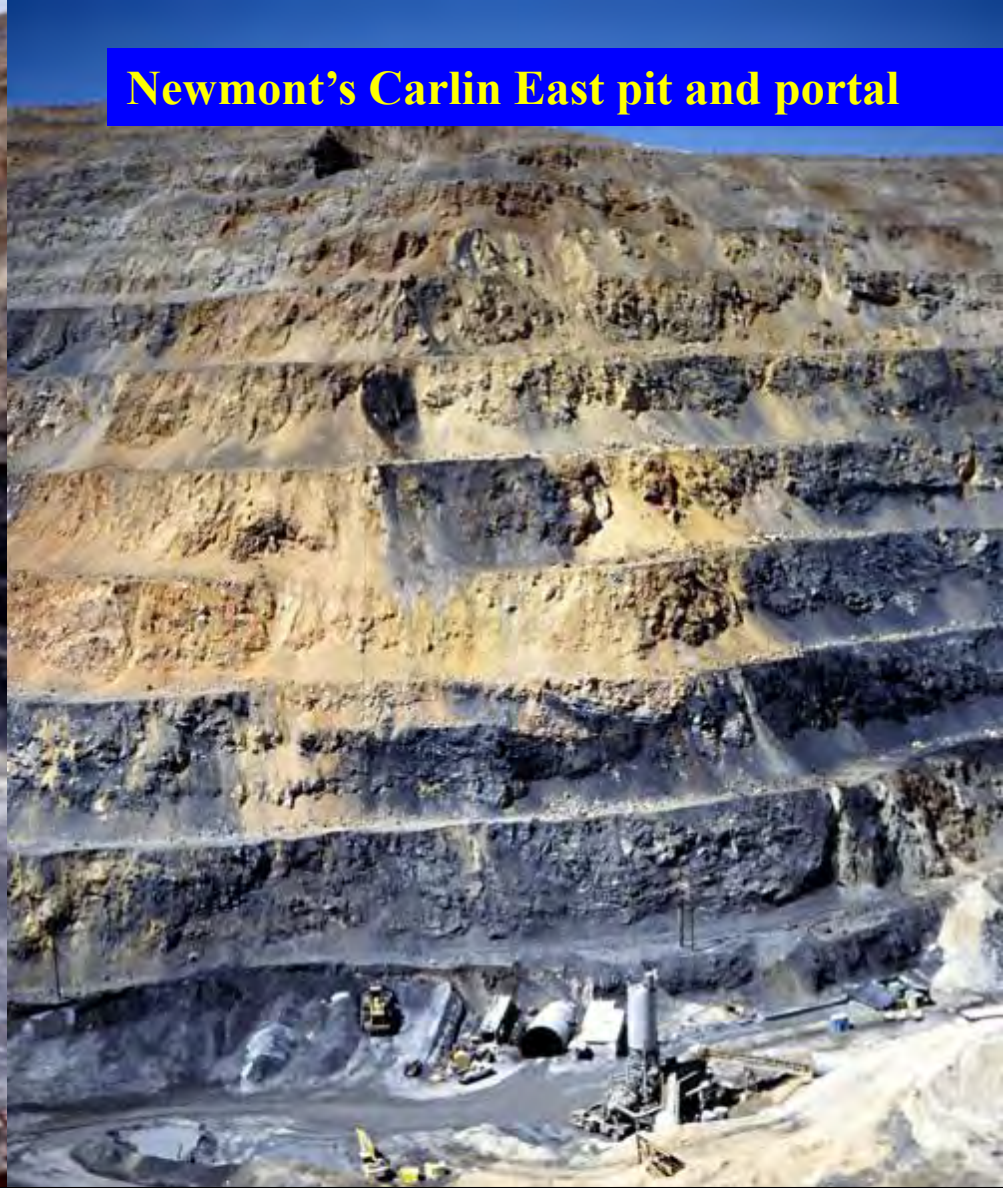
**Data from USGS Mineral Commodity Summary 2012**



**Barrick's Betze pit**

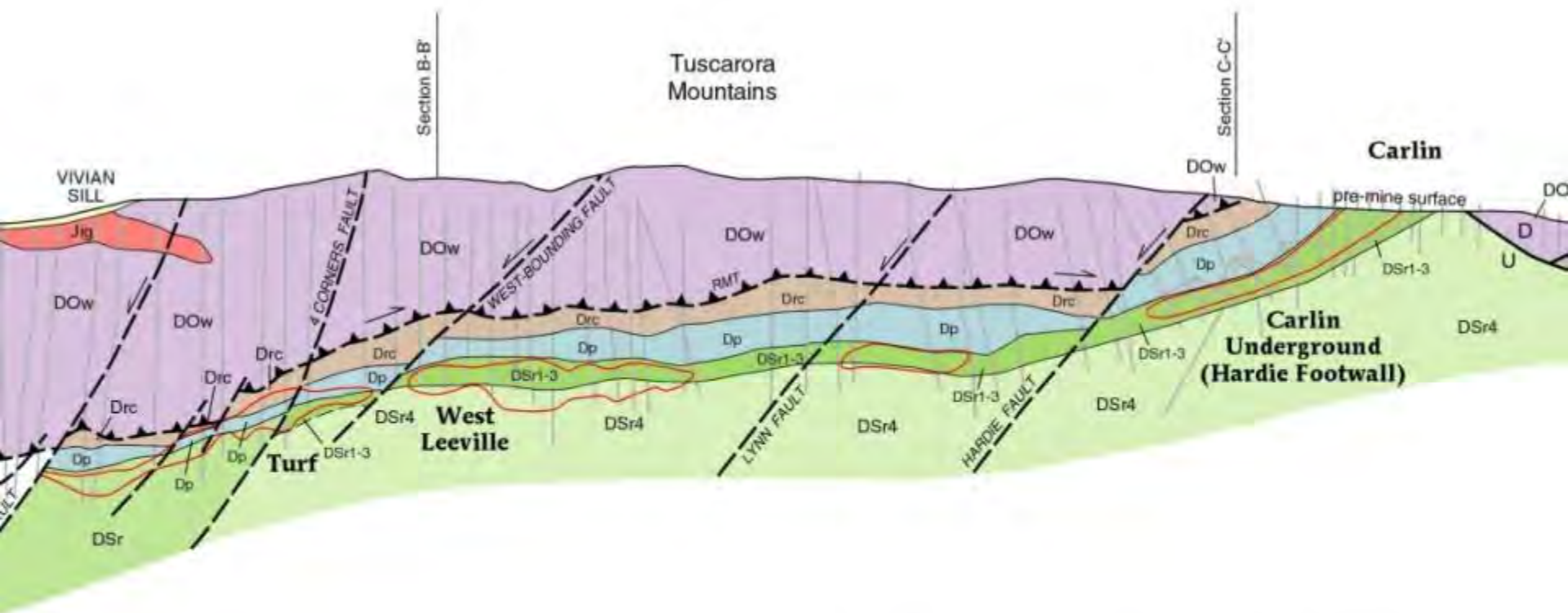


**Newmont's Carlin East pit and portal**



**Global gold production in 2011 (2,700 metric tons) exceeded the cumulative production from the Carlin trend (2,436 tons).  
The world mines the equivalent of a Carlin trend every year.**





**By the end of 2011, the Carlin trend had produced a total of 78.3 million ounces of gold (2,436 tonnes). If production levels hold, the trend will produce a cumulative amount of 100 million ounces by 2022.**

Section by Steve Moore & others, Newmont, NBMG Bulletin 111 - *Gold Deposits of the Carlin Trend*, edited by Tommy Thompson, Lew Teal, and Dick Meeuwig (204 pages, with detailed geologic maps and sections – \$35 from [www.nbm.unr.edu](http://www.nbm.unr.edu))

**23 major gold operations  
(9 not on the Carlin trend  
with production  
>100,000 ounces in 2011)**

## Major Mines, Oil Fields, and Geothermal Plants

- Precious Metals
- Industrial Minerals
- ▼ Copper and Molybdenum
- Oil Field
- Geothermal Plant



# NEVADA'S TOP GOLD PRODUCERS 2011

<b>OPERATION</b>	<b>PRODUCTION (oz)</b>
<b>Barrick Cortez</b>	<b>1,421,039</b>
<b>Barrick Goldstrike</b>	<b>1,000,883</b>
<b>Newmont Carlin Operations</b>	<b>917,973</b>
<b>Newmont Twin Creeks</b>	<b>484,449</b>
<b>Barrick/Kinross Round Mountain</b>	<b>360,020</b>
<b>Newmont Phoenix</b>	<b>205,658</b>
<b>Barrick/Newmont Turquoise Ridge</b>	<b>178,283</b>



# BARRICK CORTEZ



**Barrick Cortez mined  
1,421,039 oz Au in 2011  
(1,119,910 OP and 301,129 UG)  
Cortez property reserve is  
14.488 M oz at 0.047 oz/ton  
(proven and probable)**



# BARRICK GOLDSTRIKE



**Meikle**



**Betze-Post**

<b>Gold</b>	<b>2011 Production</b>	<b>Cumulative Production</b>	<b>Reserve (P&amp;P)</b>	<b>Reserve Grade</b>
<b>Betze-Post</b>	<b>721,534 oz</b>	<b>30.0 M oz</b>	<b>9,342,000 oz</b>	<b>0.096 oz/ton</b>
<b>Meikle</b>	<b>279,349 oz</b>	<b>8.5 M oz</b>	<b>3,035,000 oz</b>	<b>0.255 oz/ton</b>
<b>Total</b>	<b>1,000,883 oz</b>	<b>38.5 M oz</b>	<b>12,377,000 oz</b>	<b>0.113 oz/ton</b>



# NEWMONT CARLIN OPERATIONS



Gold	2011 Production	Cumulative Production	Reserve (P&P)	Reserve Grade
Open Pits	? oz	? M oz	12,620,000 oz	0.038 oz/ton
Underground	? oz	? M oz	5,090,000 oz	0.282 oz/ton
Total	917,973 oz	43,714,34 oz	17,710,000 oz	0.051 oz/ton

# NEWMONT TWIN CREEKS



<b>Gold</b>	<b>2011 Production</b>	<b>Cumulative Production</b>	<b>Reserve (P&amp;P)</b>	<b>Reserve Grade</b>
<b>Open Pit</b>	<b>484,449 oz</b>	<b>11,766,443 oz</b>	<b>3,780,000 oz</b>	<b>0.078 oz/ton</b>



# BARRICK/KINROSS ROUND MOUNTAIN

50%

50%



Gold	2011 Production	Cumulative Production	Reserve (P&P)	Reserve Grade
Open Pit	360,020 oz	13 M oz ?	2,822,000 oz	0.017 oz/ton

# NEWMONT PHOENIX



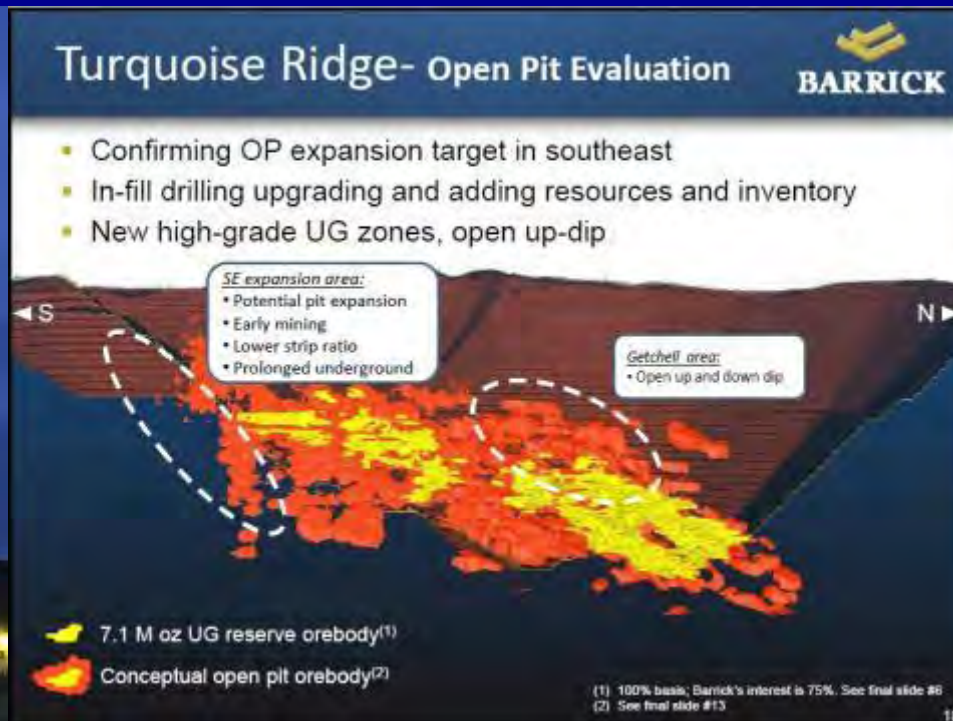
Gold	2011 Production	Cumulative Production	Reserve (P&P)	Reserve Grade
Open Pit	205,658 oz	1,062,498 oz	7,250,000 oz	0.016 oz/ton



# BARRICK/NEWMONT TURQUOISE RIDGE

75%

25%



	2011	Cumulative	Reserve	Reserve
Gold	Production	Production	(P&P)	Grade
Underground	178,283 oz	1,541,392 oz	7,059,000 oz	0.442 oz/ton

# TOP UNDERGROUND GOLD PRODUCERS



**Barrick's Cortez Hills Underground surpassed Barrick Goldstrike's Meikle as the top underground gold producer in 2011**

**Cortez Hills**  
**301,129 oz**

**Meikle**  
**279,349 oz**

# OTHER NEVADA GOLD PRODUCERS 2011

OPERATION	PRODUCTION (oz)
Goldcorp/Barrick Marigold	153,471
Barrick Homestake Ruby Hill	127,089
Newmont Midas	111,476
Allied Nevada Hycroft	104,002
Barrick Bald Mountain	92,818
Rodeo Creek Hollister	86,518
Barrick Goldstrike Storm	86,508
Jipangu Florida Canyon/Standard	41,161
KGHM International Robinson	31,969
Rawhide Mining Denton-Rawhide	24,828

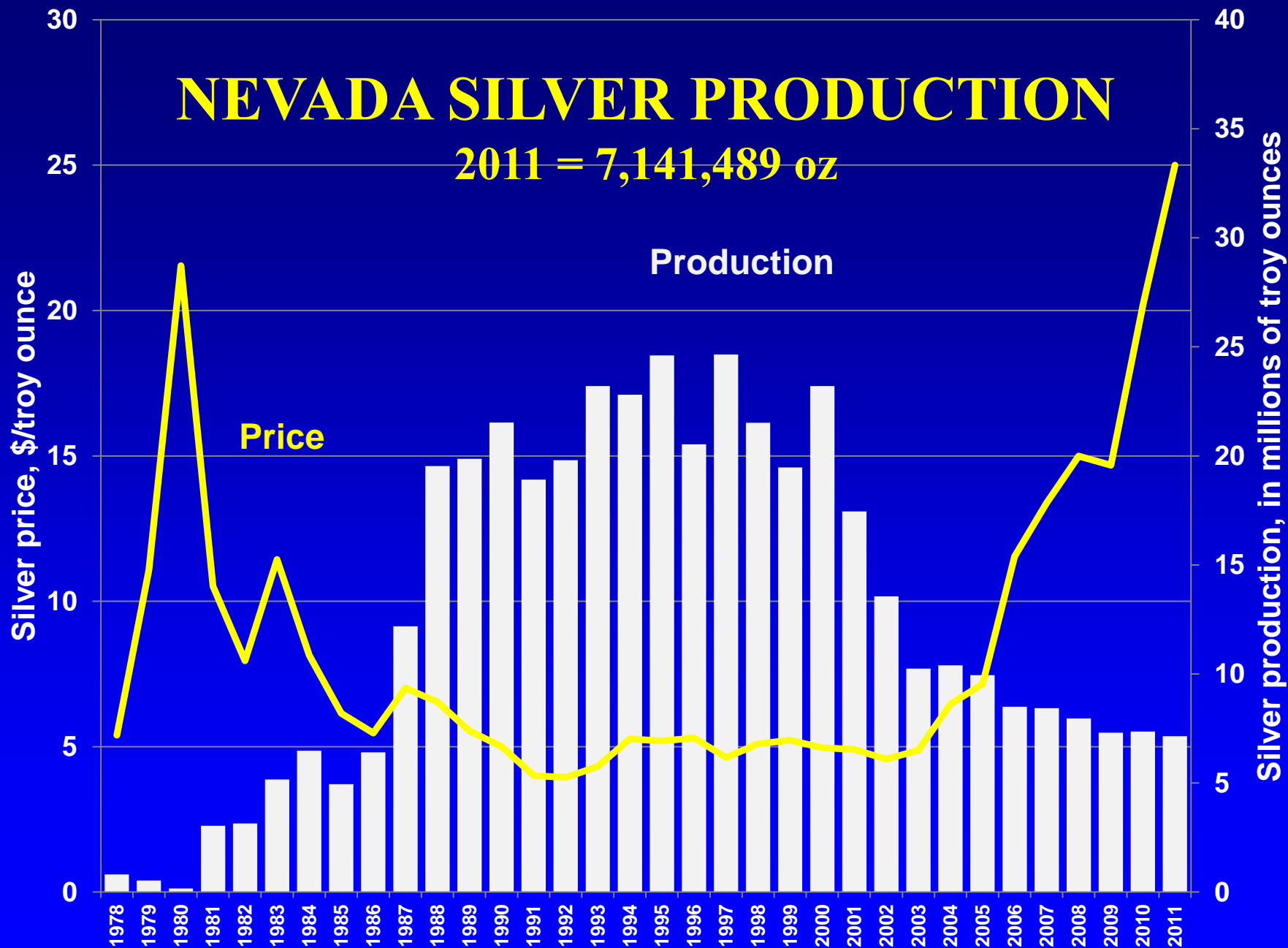




"Forget gold. Strategic metals are where it's at."

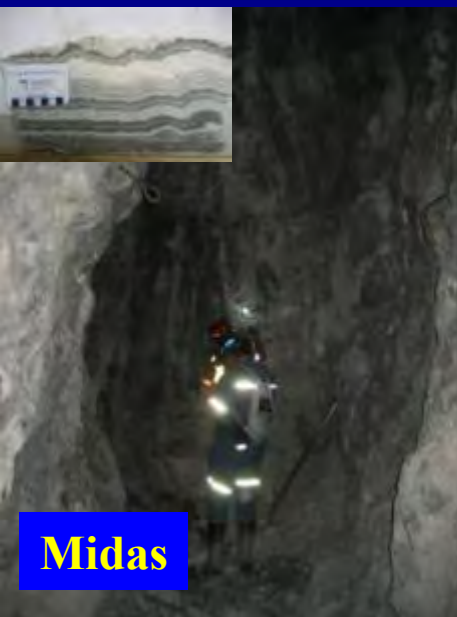
# NEVADA SILVER PRODUCTION

2011 = 7,141,489 oz





# NEVADA'S TOP SILVER PRODUCERS 2011



**Midas**



**Rochester**



**Phoenix**

Silver	2011 Production	Cumulative Production	Reserve (P&P)	Reserve Grade
Newmont Midas	1,512,287 oz	19,619,277 oz	5.3 M oz	7.201 oz/ton
Coeur Rochester	1,392,433 oz	133,795,827 oz	29.6 M oz	0.630 oz/ton
Newmont Phoenix	1,152,312 oz	5,036,330 oz	110.0 M oz	0.244 oz/ton

# NEVADA COPPER PRODUCTION

2011 = 123,791,489 lbs

Copper production, millions of pounds

Production

Price

Copper price, \$/pound

1989

1990

1991

1992

1993

1994

1995

1996

1997

1998

1999

2000

2001

2002

2003

2004

2005

2006

2007

2008

2009

2010

2011

5

4

3

2

1

0

200

180

160

140

120

100

80

60

40

20

0

# NEVADA'S COPPER PRODUCERS 2011



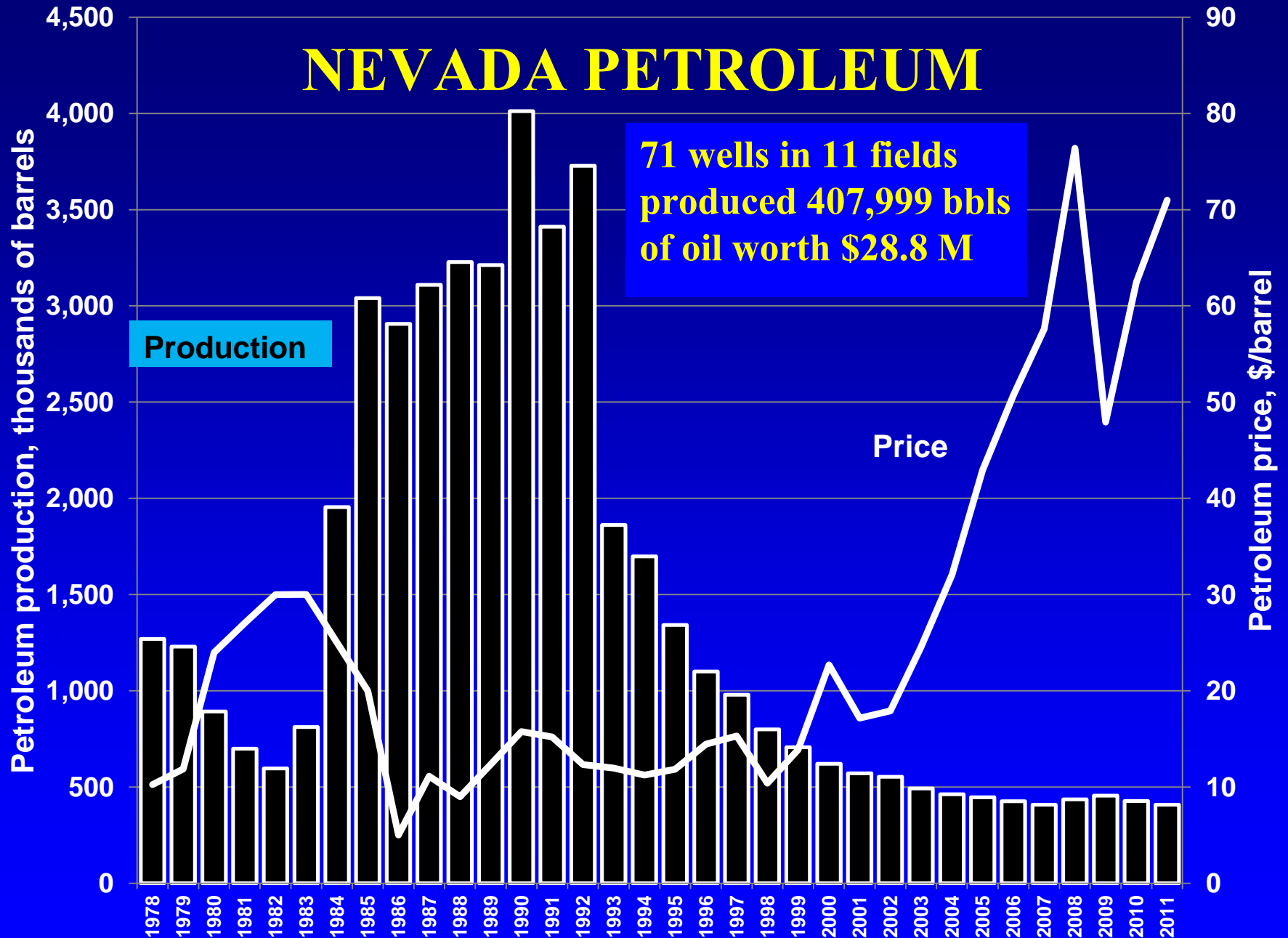
<b>Copper</b>	<b>2011 Production</b>	<b>Cumulative Production</b>	<b>Reserve (P&amp;P)</b>	<b>Reserve Grade</b>
<b>KGHM Robinson</b>	<b>99,893,372 lbs Cu</b>	<b>? M lbs</b>	<b>4.728 B lbs</b>	<b>N/A</b>
<b>Newmont Phoenix</b>	<b>23,897,865 lbs Cu</b>	<b>99,537,082 lbs</b>	<b>1.640 B lbs</b>	<b>0.18%</b>

# OTHER NEVADA MINERAL PRODUCTION

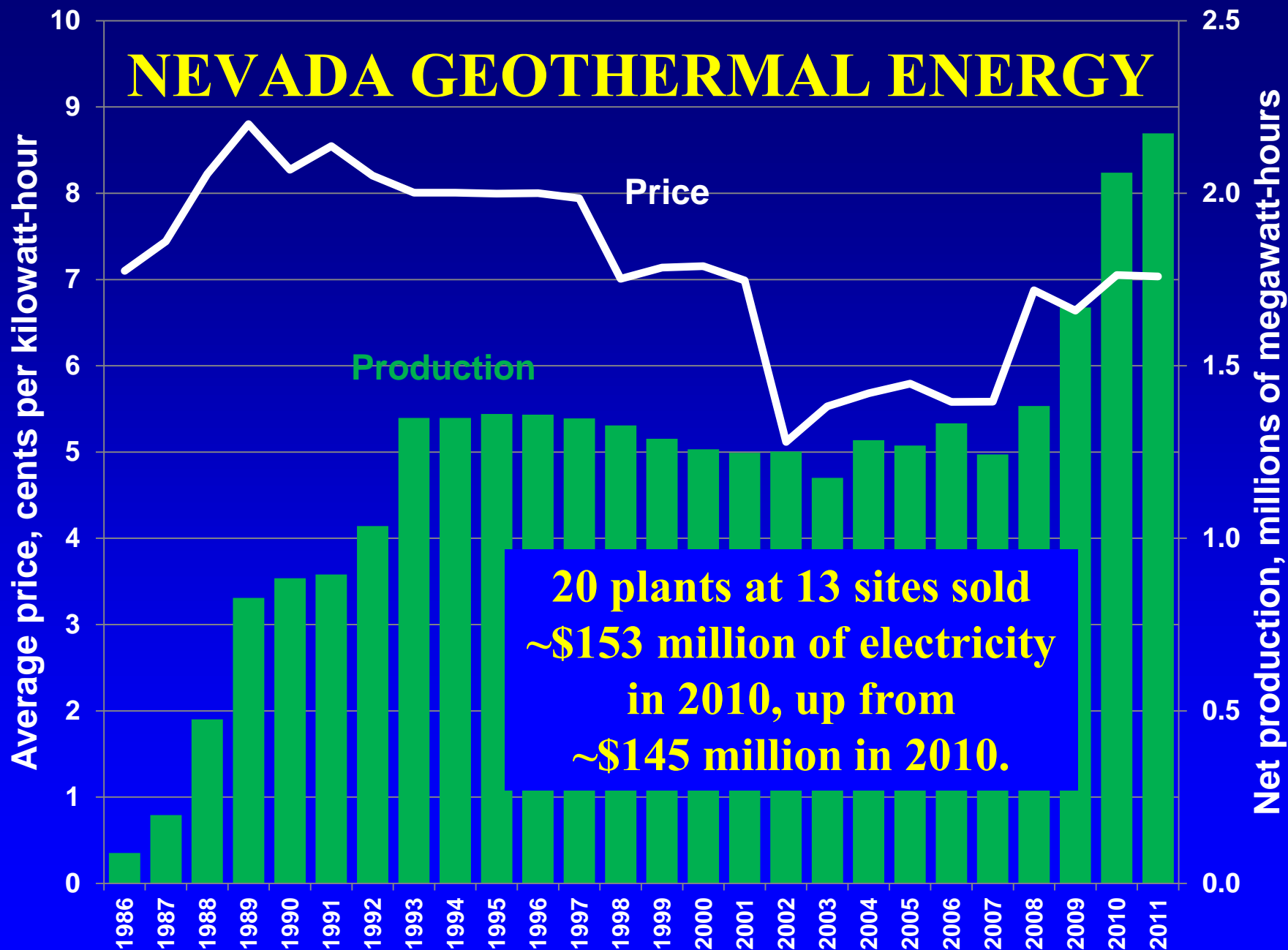
- Nevada led the nation in nonfuel mineral commodities by value – followed by AZ, MN, UT, AK, FL, CA, and TX
- Only producer in the U.S. of magnesite, lithium, and specialty clays sepiolite and saponite
- Led the U.S. in production of gold and barite
- Other commodities include: aggregate, lime, cement, silica sand, diatomite, gypsum, clays, molybdenum, perlite, iron ore, dimension stone, salt, semiprecious gemstones (turquoise and opal), and mercury
- Total value of the non-metallic minerals was \$188 M in 2011(excluding aggregates)

# NEVADA PETROLEUM

71 wells in 11 fields  
produced 407,999 bbls  
of oil worth \$28.8 M



# NEVADA GEOTHERMAL ENERGY



# NEVADA MINING FINANCIAL ASSURANCE

(in millions)

	2003	2005	2007	2008	2009	2010	2011	2012
Bonds	\$272	\$248	\$210.6	\$214.0	\$328.2	\$393.0	\$998.9	\$1,165.6
Letters of Credit		\$254	\$412.7	\$618.1	\$654.5	\$629.9	\$413.4	\$489.8
CD / Cash		\$4	\$4.7	\$9.3	\$3.9	\$6.1	\$7.0	\$11.7
Corp Guarantee	\$271	\$204	\$187.3	\$182.0	\$179.7	\$183.7	\$183.0	\$180.5
USFS	\$14	\$10	\$12.3	\$12.5	\$13.5	\$13.3	\$13.3	\$16.0
Bond Pool	\$1	\$1	\$2.3	\$2.7	\$2.2	\$2.2	\$2.2	\$2.2
Total	\$558	\$721	\$829.9	\$1,038.6	\$1,182.0	\$1,228.2	\$1,617.8	\$1,865.8

**NOTE: Data from the Nevada Division of Environmental Protection**



# **Nevada Bureau of Mines and Geology CMR/NDOM-Funded Exploration Survey**

**John Muntean and Larry Garside**  
**Nevada Bureau of Mines and Geology**  
**University of Nevada Reno**  
Commission on Mineral Resources Meeting  
November 9<sup>th</sup>, 2012

# **Nevada Bureau of Mines and Geology CMR/NDOM-Funded Exploration Survey 2011 Expenditures**

- **Total: \$674,691,094**
- Expenditures reported for 169 companies
- 32% of the total is by 2 metal companies
- Mean: \$3.9M, Median: \$0.5M
- By Sector:
  - Metals: \$609,274,814 (138 companies)
    - 90% of the total exploration
  - Industrial Minerals: \$9,129,971 (18 companies)
  - Geothermal: \$54,346,308 (9 companies)
  - Oil and Gas: \$1,850,000 (4 companies)

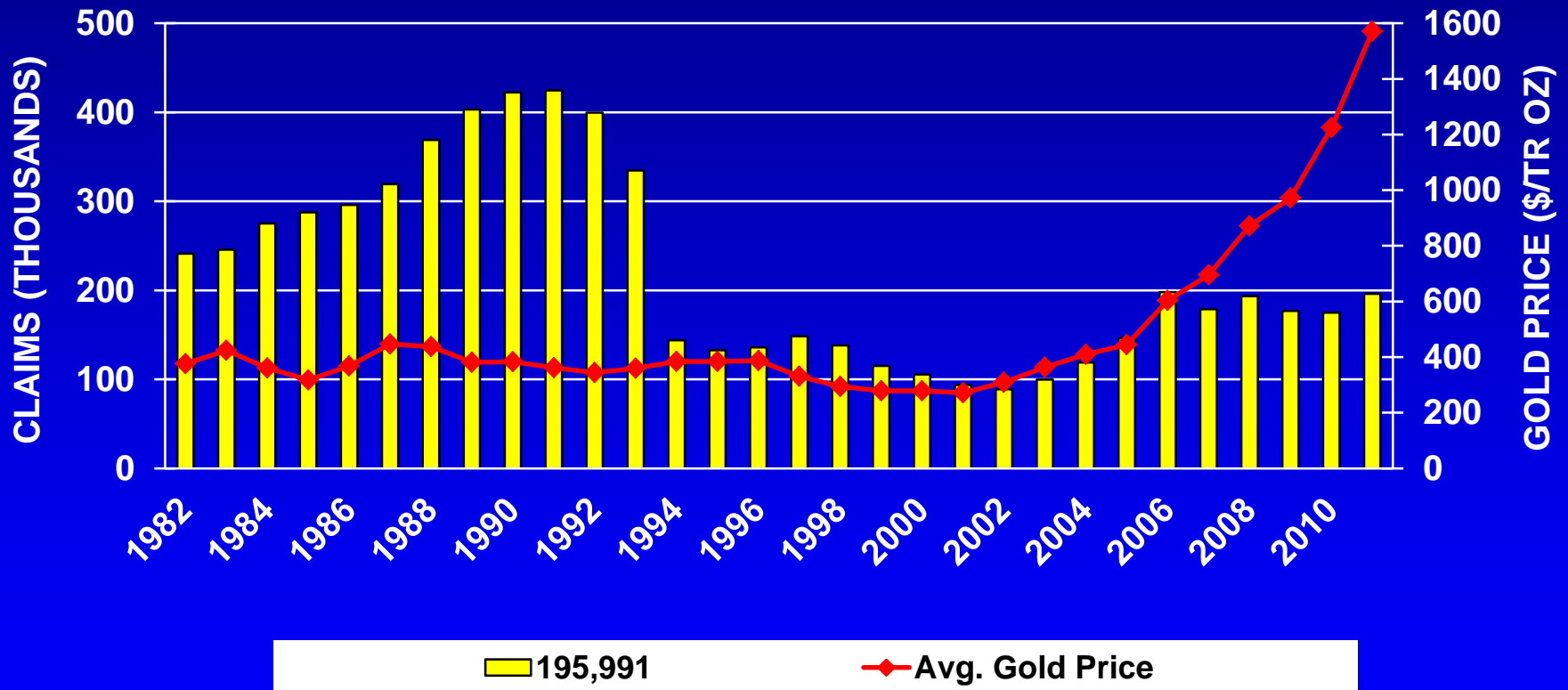
# **Nevada Bureau of Mines and Geology CMR/NDOM-Funded Exploration Survey Projected 2012 Expenditures**

- **Total: \$504,577,302**
- Expenditures for 95 companies who responded to survey
- No internet research was done to estimate projected 2012 expenditures, so this is a minimum
- 57% of the total is by 2 metal companies
- Mean: \$5.3M, Median: \$1.2M
- By Sector:
  - Metals: \$483,727,302 (81 companies)
    - 96% of the total exploration
  - Industrial Minerals: \$7,700,000 (6 companies)
  - Geothermal: \$5,450,000 (3 companies)
  - Oil and Gas: \$7,700,000 (5 companies)

# **Nevada Bureau of Mines and Geology CMR/NDOM-Funded Exploration Survey Preliminary Takeaway Messages**

- 1. \$675M spent on exploration in 2011.**
- 2. 1040 people employed in exploration in 2011.**
- 3. Projections for 2012 are similar to the 2011 numbers.**
- 4. Gold exploration accounts for >80-90% of the numbers.**
- 5. Two large gold companies account for ~25-30% of the numbers.**
- 6. Over 50% of the expenditures and employees can be accounted for by companies that spent <\$20M and had <20 employees involved in Nevada exploration.**

# ACTIVE CLAIMS & GOLD PRICES 1982-2011



NOTE: Claim data from the BLM Public Land Statistics

# CLAIM FILINGS & GOLD PRICES

## 1982-2012



**224,772 claim filings in FY2012 (up 14.1% from FY2011)**

NOTE: Claim Filings in Fiscal Year from NDOM Financial Statements



# NEVADA'S TOP TEN EXPLORATION PROJECTS 2013

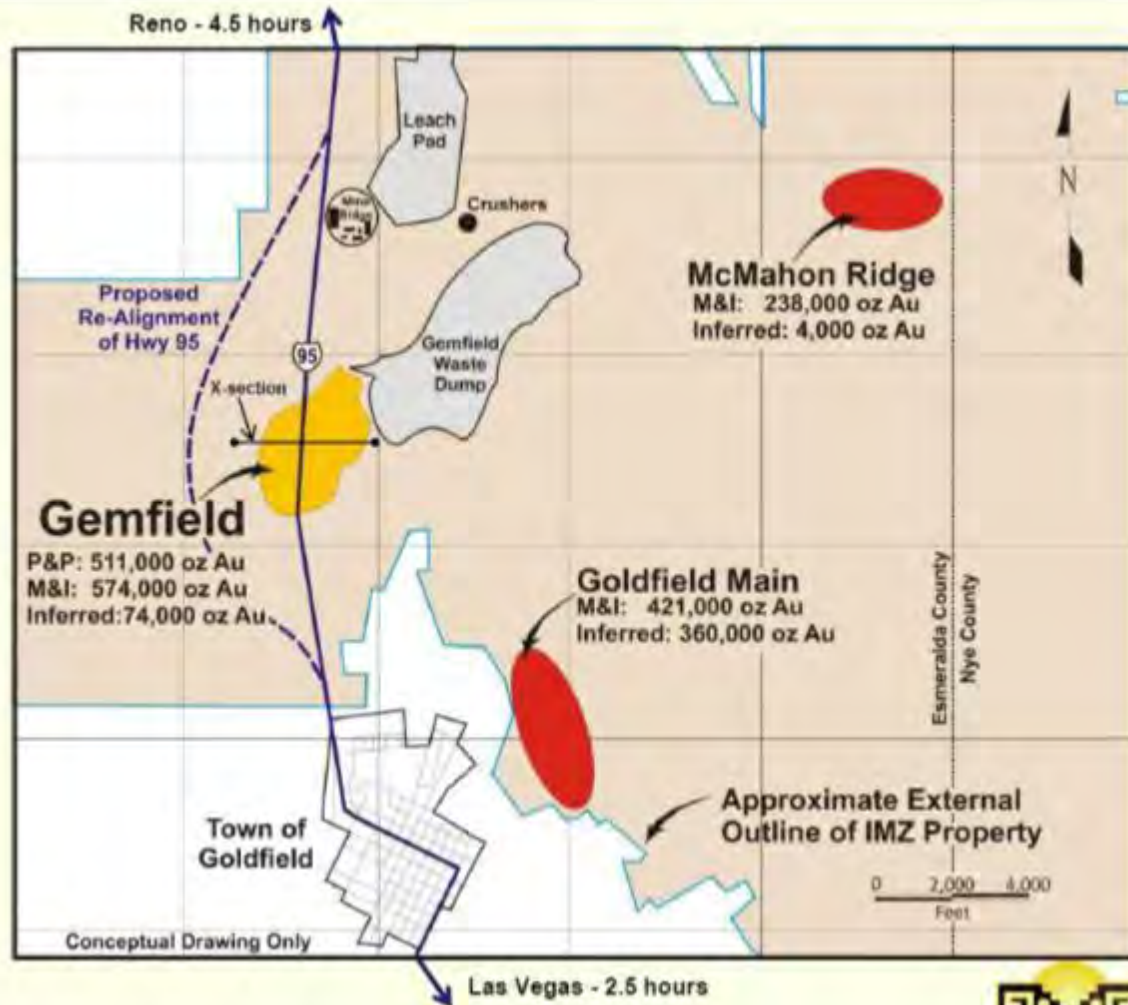




# GEMFIELD - Esmeralda Co.

*International Minerals*

[www.intlminerals.com](http://www.intlminerals.com)

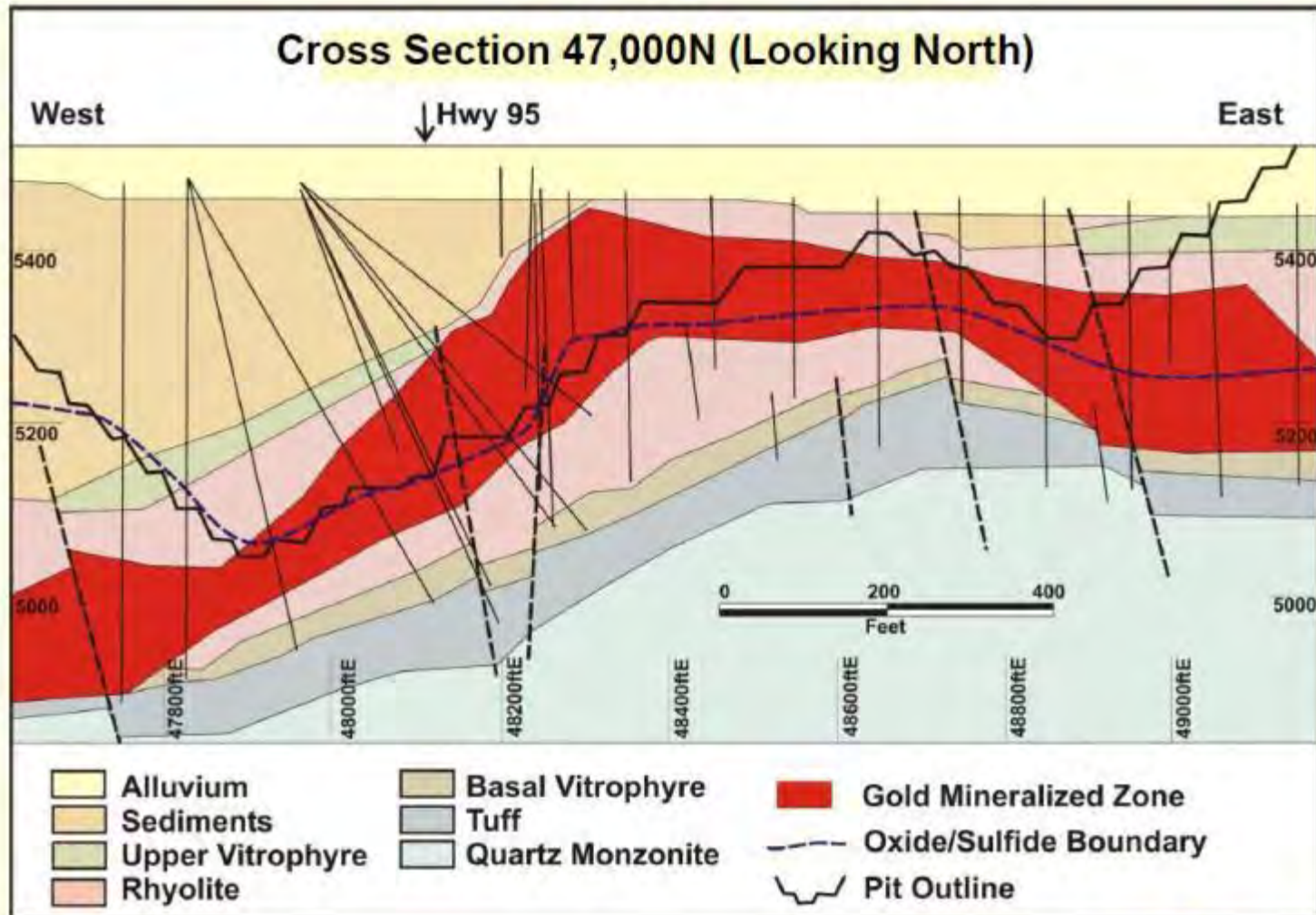


A structurally controlled, volcanic-hosted, epithermal Au deposit of the quartz-alunite type



# GEMFIELD - *International Minerals*

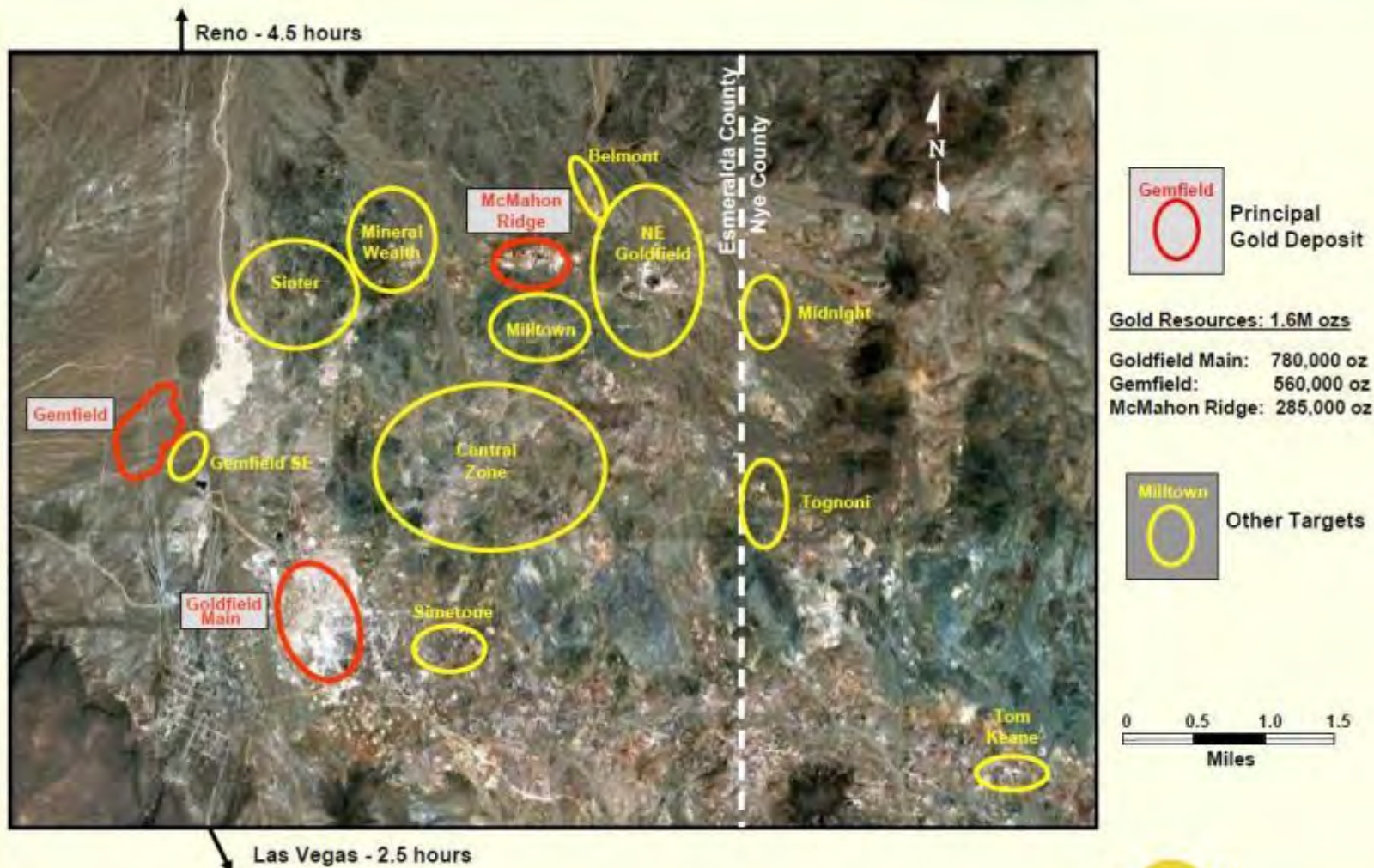
## Goldfield, Nevada - Gemfield Deposit - Cross Section





# GEMFIELD - *International Minerals*

## Goldfield, Nevada – Principal Target Areas



# GEMFIELD - *International Minerals*

IMZ - Goldfield, Nevada - IMZ 100% - Development Stage

## ❖ Historical Mining District in Southern Nevada

- Approx 4M oz gold production from 1903-1940's at ~18 g/t

## ❖ Three Gold Deposits (Gemfield, McMahon Ridge, Goldfield Main)

- P+P Reserves\*: 0.51M oz Au (14.3Mt at 1.1 g/t Au)
- M+I Resources: 1.23M oz Au (31.1Mt at 1.2 g/t Au)
- Inferred Resources: 0.44M oz Au (10.9Mt at 1.3 g/t Au)

## ❖ Heap Leach Feasibility Study at Gemfield: July 2012

- Basic engineering begins Q4 2012 – ends Q2 2013

## ❖ Targeting Production in Mid 2015 (Gemfield only)

- 66,000 Au ozs/year, 6,000 tpd open-pit heap leach operation
- New met tests suggest a 7,500 tpd operation with 14% lower processing costs and G & A is feasible. A new mine plan is scheduled for Q2 2013.
- Capex estimate: \$133M (Plant/Infrastructure \$93M, Mine \$20M, Road \$20M)
- Total cash cost (with Ag by-product credit): \$611/oz Au

## ❖ Future Milling Scenario

- Under evaluation

## ❖ Testing new drill targets outside of existing mineralized areas

\* P+P Reserves included in M+I Resources.





# GIBELLINI HILL - Eureka Co.

*American Vanadium Corporation*

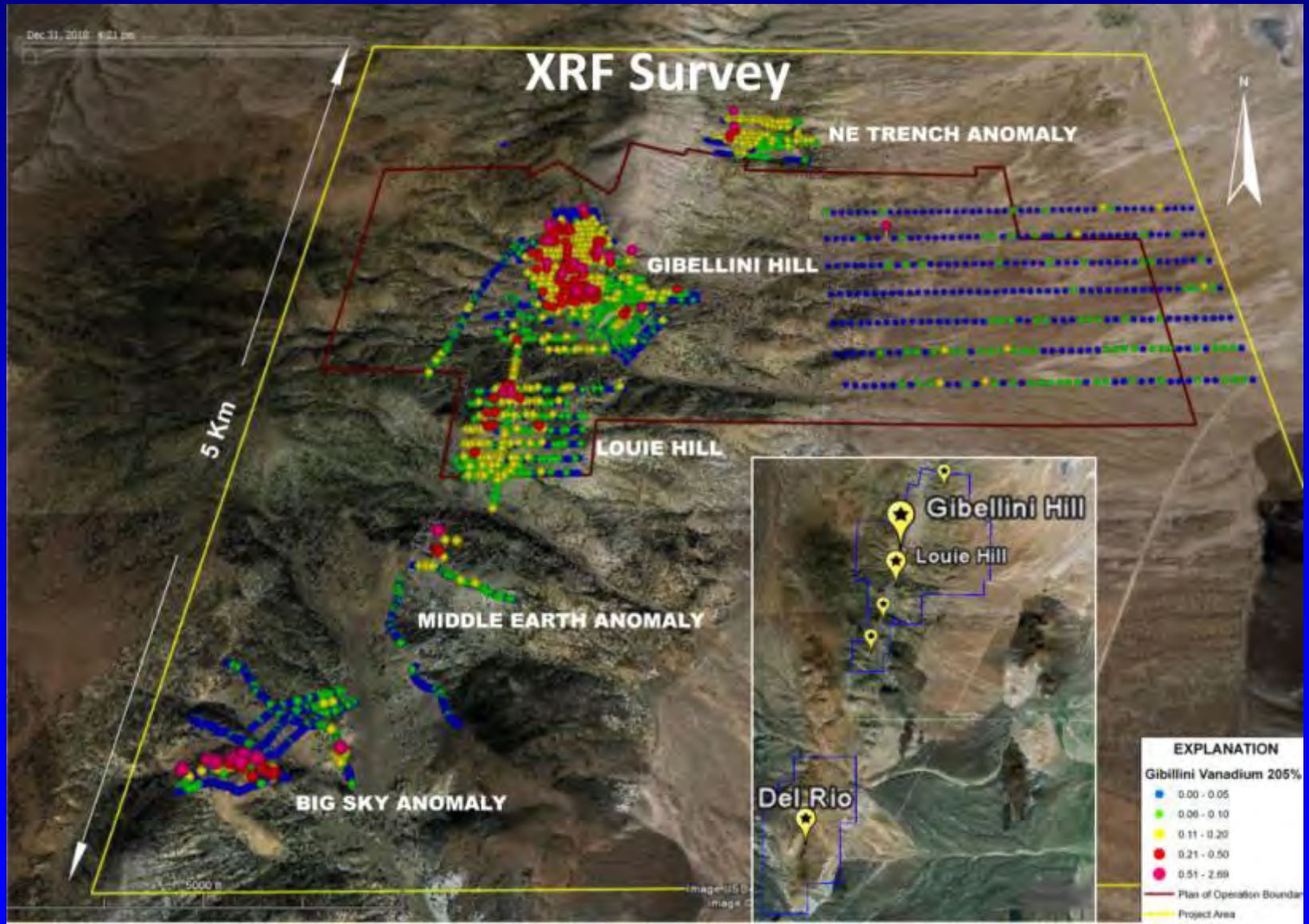
[www.americanvanadium.com](http://www.americanvanadium.com)

A variety of vanadium minerals hosted in an organic-rich siliceous black shale with an oxidation zone of up to 100 feet





# GIBELLINI HILL - *American Vanadium*



# **GIBELLINI HILL - *American Vanadium***

- **Potentially lowest cost primary vanadium producer in the world and could supply 5% of world's current demand for vanadium**
- **NI 43-101 compliant “positive feasibility study” in 2011 added 41 M pounds (inferred) at Louie Hill to resource of 18 M tons @ 0.339%  $V_2O_5$  = 122 M pounds of  $V_2O_5$  (indicated) at Gibellini Hill**
- **Permitting and engineering for open pit/heap leach at projected 11.4 M lbs/yr  $V_2O_5$**



# **GOLDRUSH – Eureka Co.**

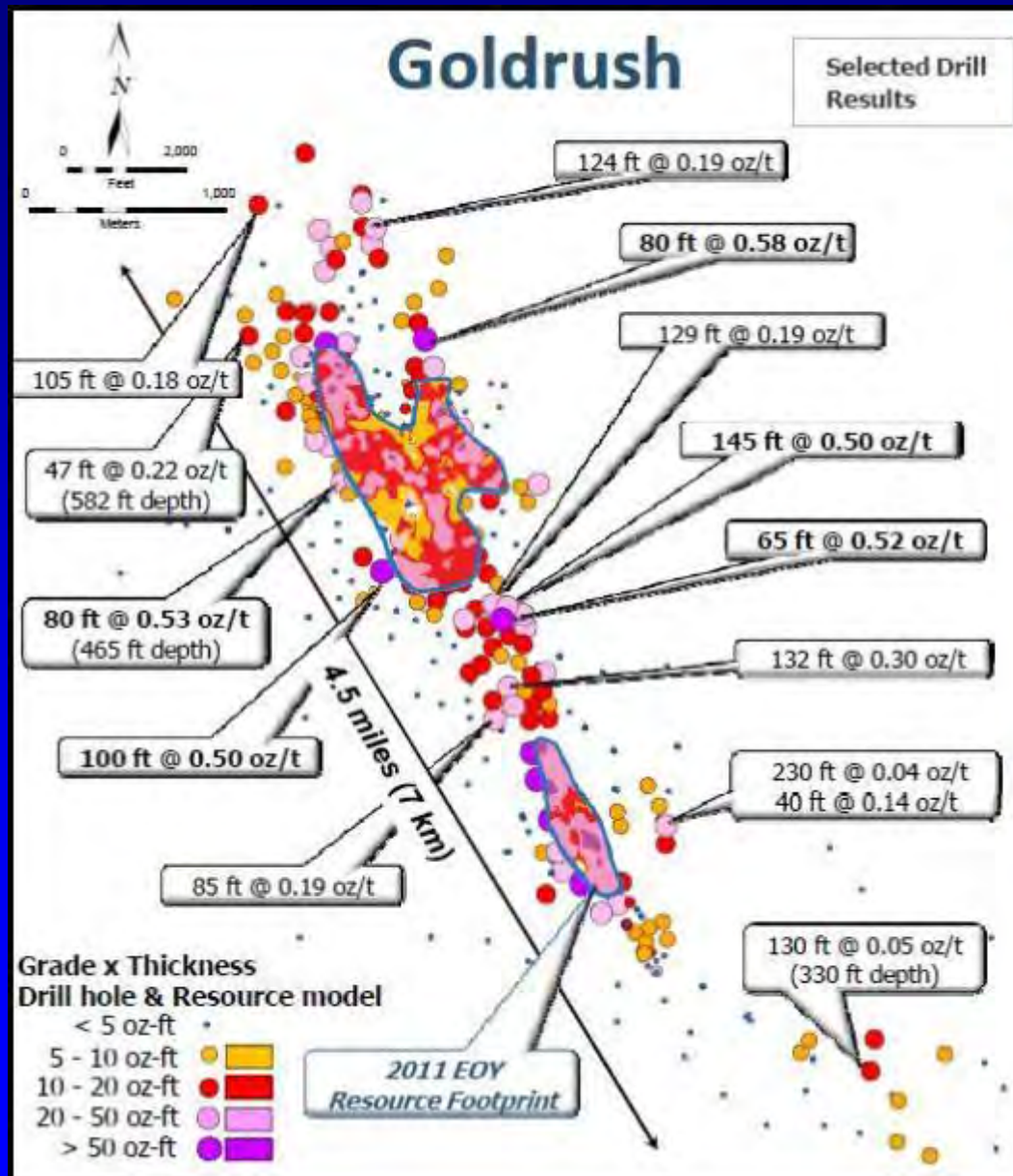
*Barrick Gold Corporation – [www.barrick.com](http://www.barrick.com)*

## **Goldrush (Cortez)**



Initial 3.5 Moz resource doubled to:  
**1.3 Moz** measured & indicated<sup>(1)</sup>  
**5.7 Moz** inferred<sup>(1)</sup>

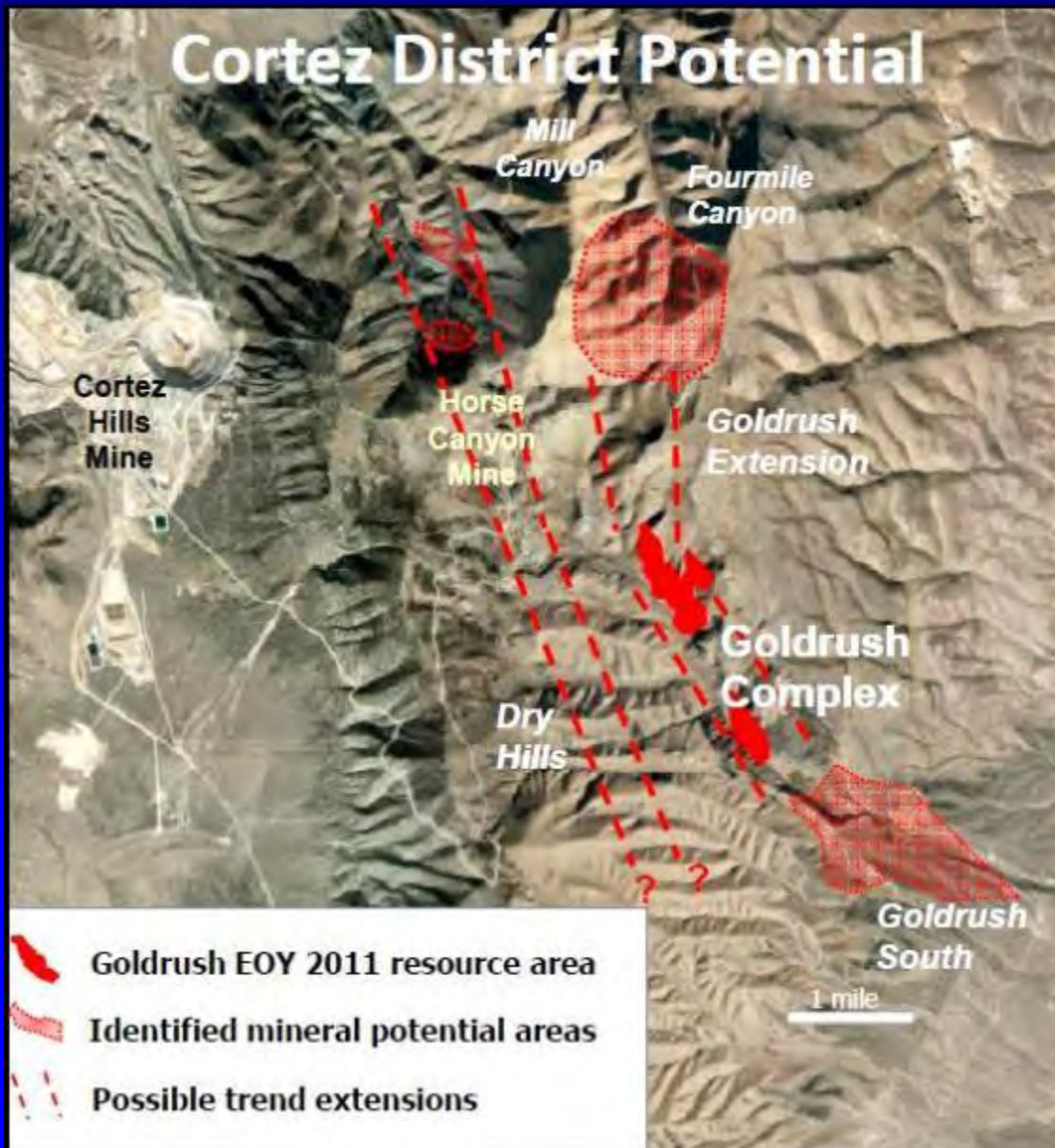
# GOLDRUSH - *Barrick Gold Corporation*



- Footprint of system almost doubled to 7 km strike
- High grade zones expanded between 2011 resource areas
- Shallow high grade west of Red Hill
- Expansion of underground-type grades to the north



# GOLDRUSH - *Barrick Gold Corporation*



- Tremendous district potential
- Parallel trend identified
- Pipeline of drill targets for 2013 testing

# GOLDRUSH - *Barrick Gold Corporation*

## Goldrush / Red Hill Drill Core



- Example of replacement-style mineralization at Goldrush
- Discovery drill hole HCD09-01 intersected 67.2 ft grading 0.89 opt
- High grade gold from KB zone at Red Hill
- Drill hole RHD08-06 intersected 194 ft grading 0.90 opt Au

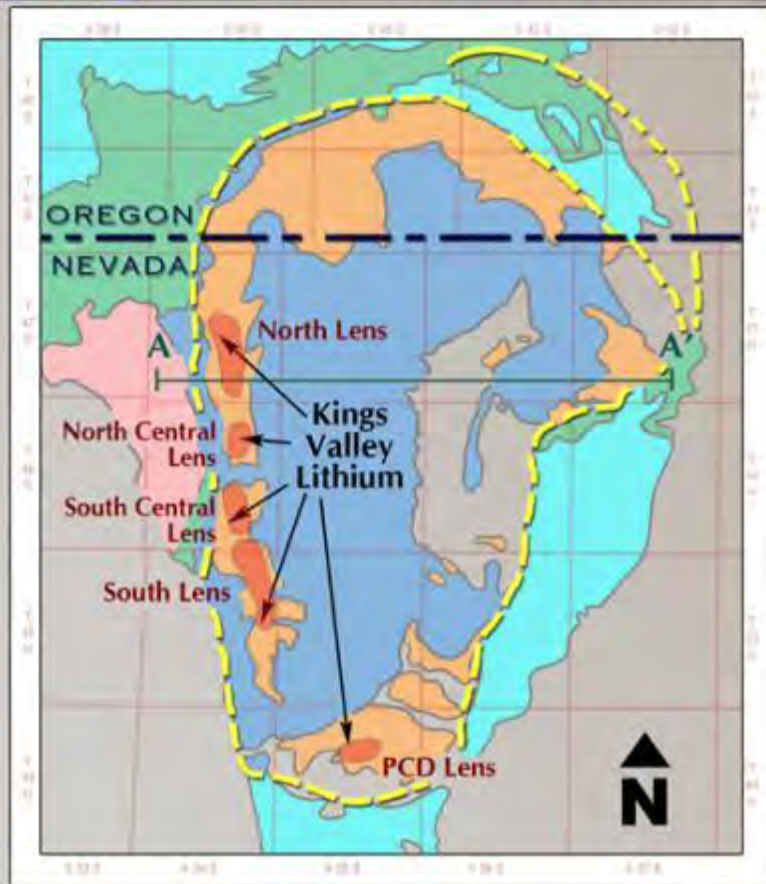


# KINGS VALLEY – Humboldt Co.

*Western Lithium Corporation*

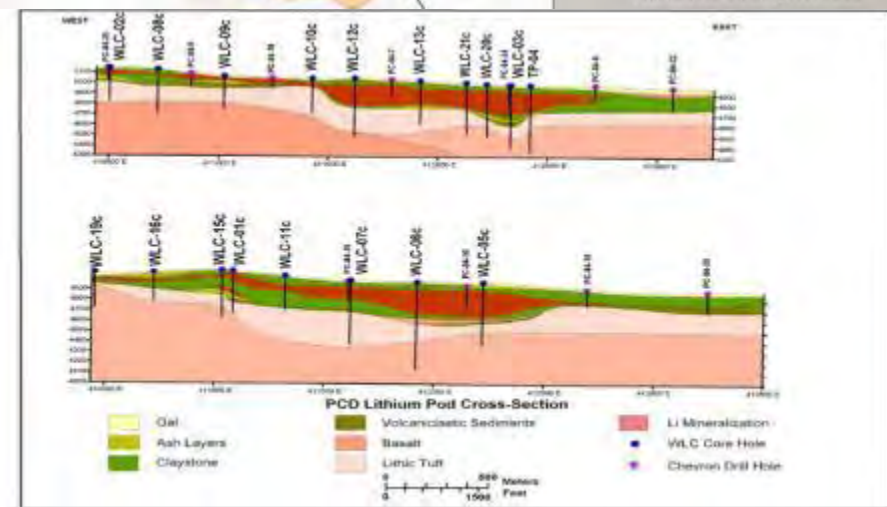
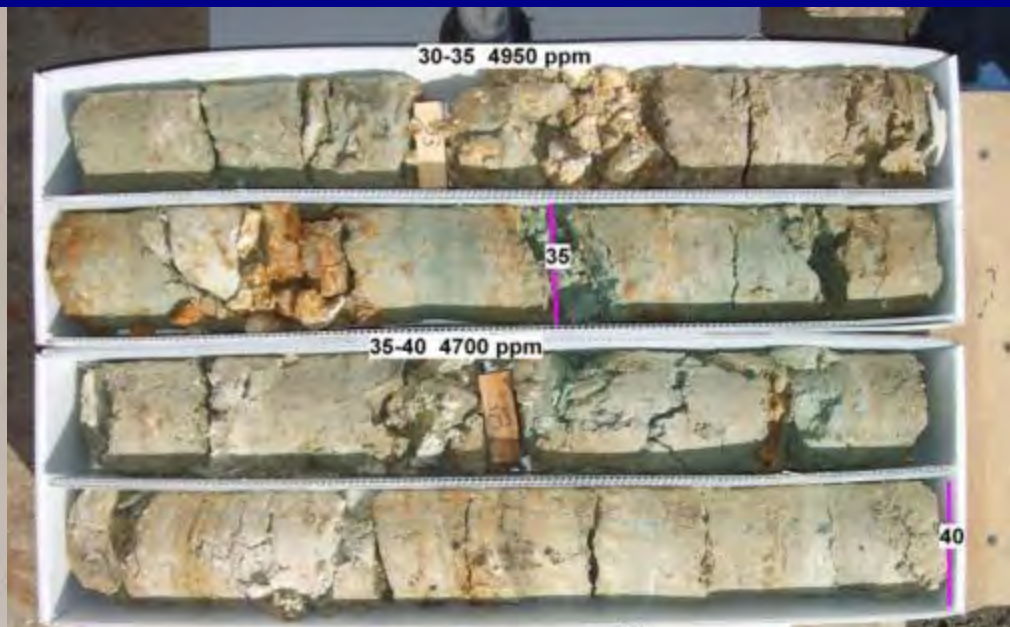
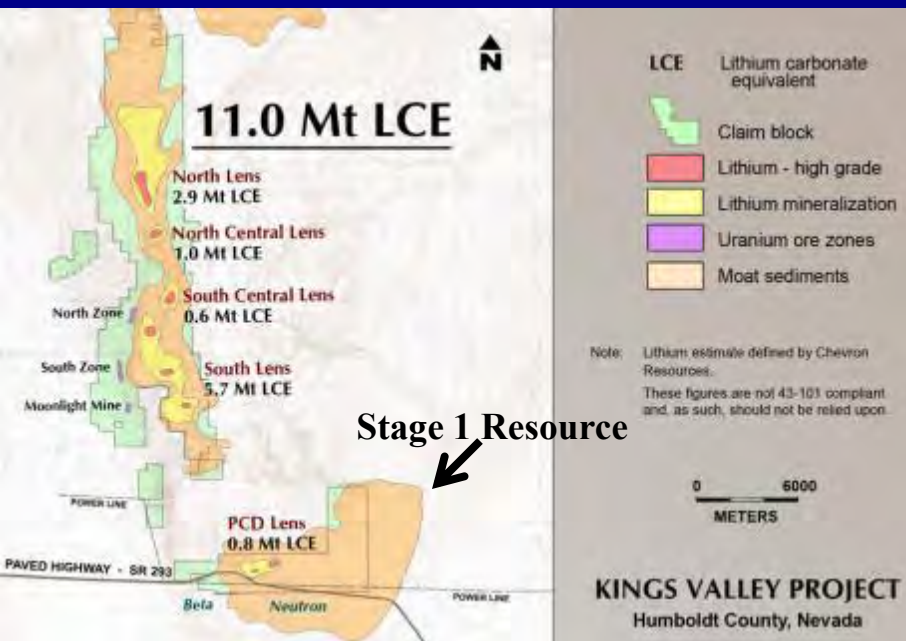
[www.westernlithium.com](http://www.westernlithium.com)

## KINGS VALLEY LITHIUM PROJECT, NEVADA



**Lithium-enriched hectorite clay in altered volcaniclastic moat sediments of the Miocene McDermitt Caldera**

# KINGS VALLEY - *Western Lithium*



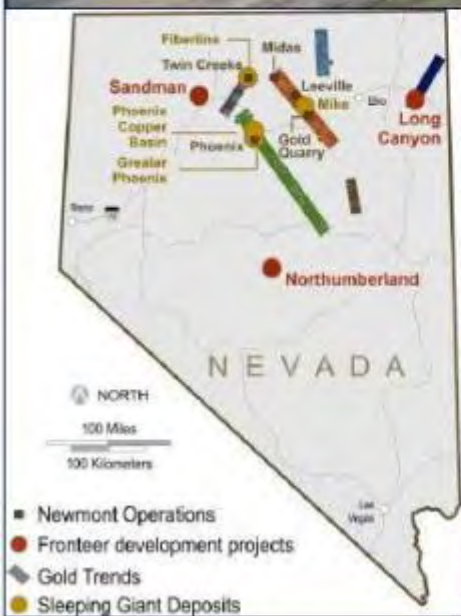


# **KINGS VALLEY - *Western Lithium***

- **One of the world's largest known lithium deposits**
- **Ore Reserves proven and probable (Dec, 2011):**
  - **27.1 million tonnes grading 0.395% lithium**
  - **Also recoverable potassium and sodium**
- **Capital Costs = \$427 million, 20 yr mine life**
- **Permitting a hectorite clay operation to supply deep drilling additives for oil and gas industry**
- **Approvals expected in early 2014**

# LONG CANYON – Elko Co.

## *Newmont Mining Corporation*



**Near surface oxidized sediment-hosted Carlin-type gold deposit associated with solution breccias and stratabound horizons**

# LONG CANYON - *Newmont Mining*

## North America

### *Long Canyon's Significant Potential Continues to be Discovered*



- Recent drill intercept results<sup>5</sup>:
  - 23m @ 9.0 g/t
  - 57m @ 8.4 g/t
  - 23m @ 10.5 g/t
  - 34m @ 1.4 g/t
  - 55m @ 11.2 g/t
- Expect 75,000m drilled in 2012
- Expect infill drilling to convert NRM to reserve; condemnation and geotechnical drilling in 2013
- Feasibility study expected to be complete December 2013

### **Trend Potential of >3-4X Fronteer's Stated Resource Estimate<sup>6</sup>**

*(1.4Moz M&I + 0.8Moz Inferred; No ounces currently in reserves or NRM; Expected to declare first NRM in early 2013)*



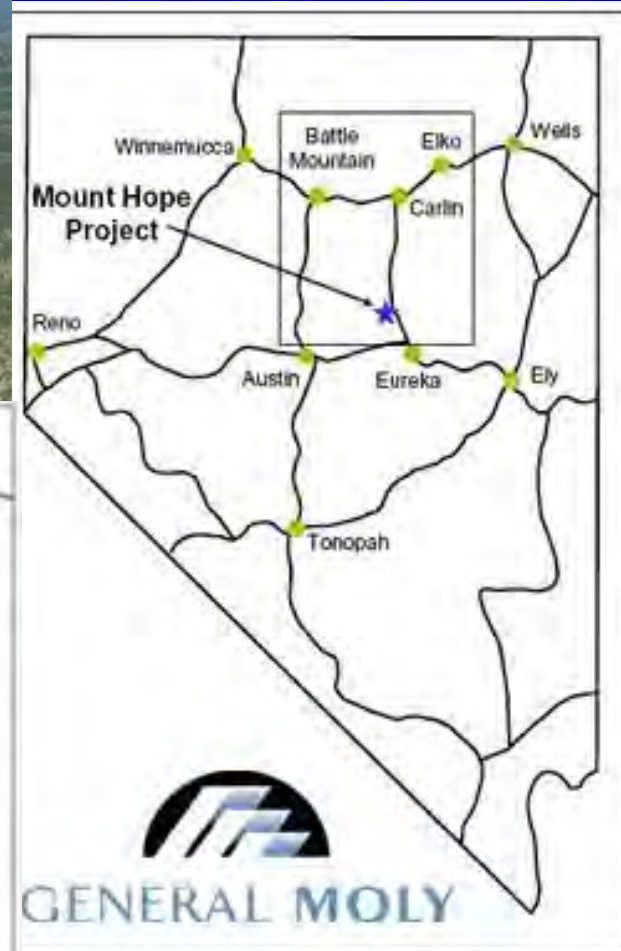
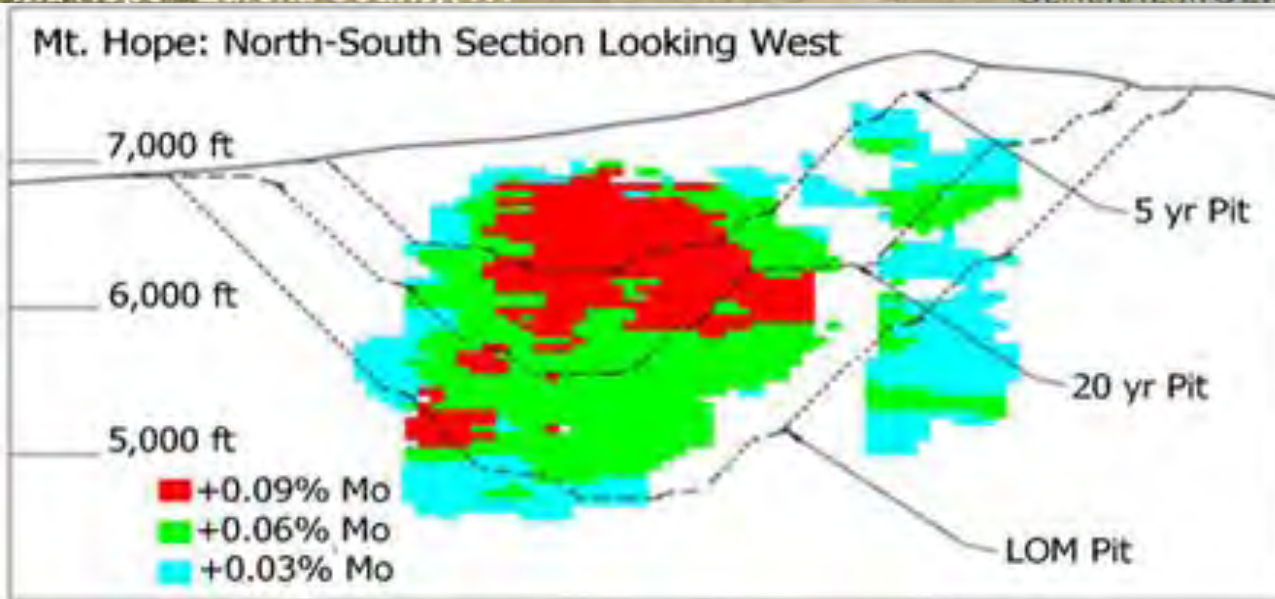
# **LONG CANYON - *Newmont Mining***

- **Predicts gold resources will triple to quadruple from Frontier estimate of 1.4 M oz Au M&I**
- **Deposit is open to north and south**
- **Filed a plan of operations in April, 2012**
- **Prefeasibility study by end of 2012**
- **Open pit mine with a mill and heap leach facility**
- **Full production in 2017**
- **Permanent work force of 400 employees**



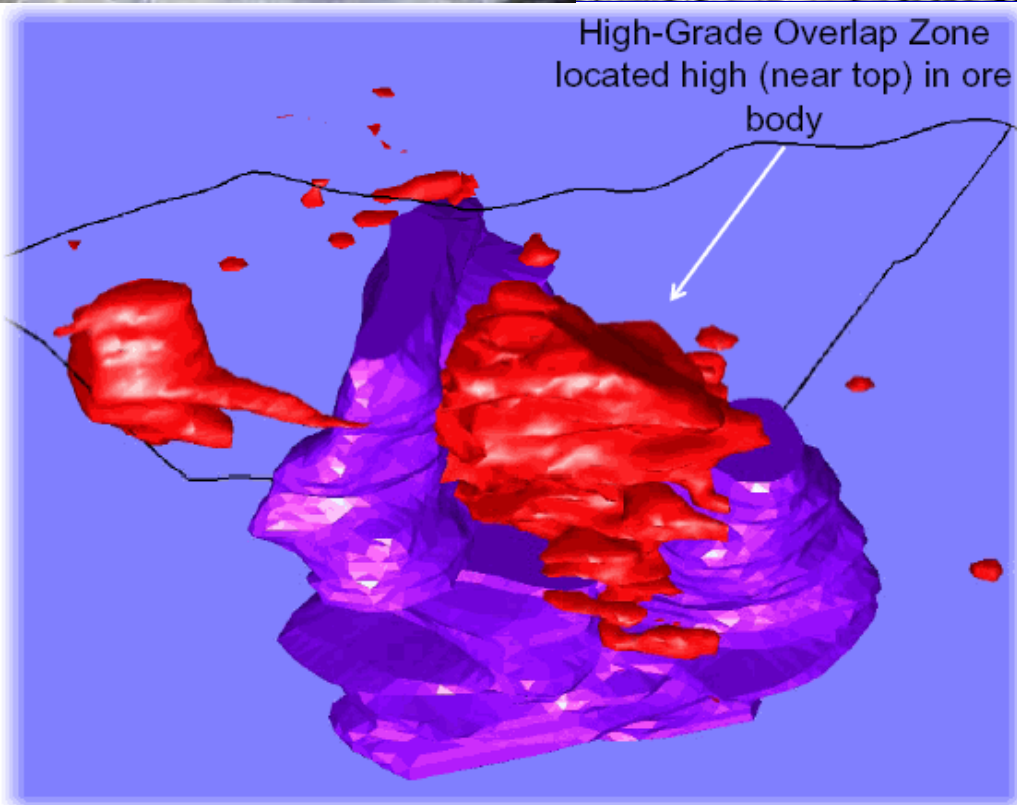
# MT. HOPE - Eureka Co.

*General Moly* - [www.generalmoly.com](http://www.generalmoly.com)





## **MT. HOPE -** *General Moly*



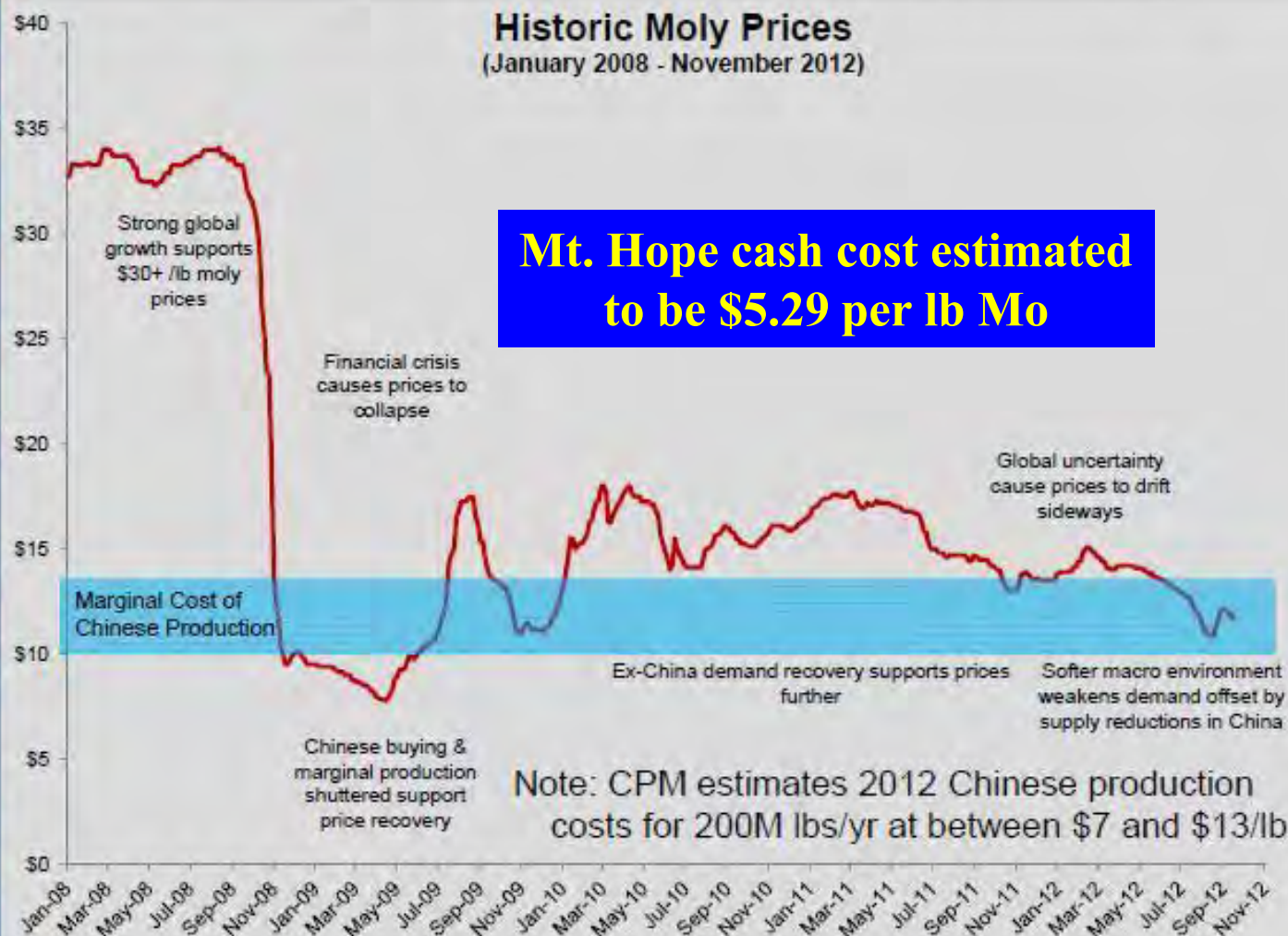
**Classic molybdenum porphyry with two dome shaped shells of quartz porphyry weakly to densely veined by quartz stockworks containing molybdenite**



# MT. HOPE - *General Moly*



## Industry Marginal Cost Limits Price Downside





# **MT. HOPE - *General Moly***

- **ROD for EIS received, POO approved 11/12**
- **Reserves of 1.3 B lbs Mo (proven and probable)**
- **40 M lbs Mo/yr @ 0.103% Mo (first 5 yrs)**
- **Net Present Value of \$1.2 B at \$15/lb Mo**
- **Capital cost estimate \$1.284 B, 44 yr mine life**
- **Off-take and financing agreements with partners: Hanlong (China), APERAM formerly ArcelorMittal (India), POSCO (S. Korea), SeAH Besteel (S. Korea), and Sojitz (Japan)**

# PAN – White Pine Co.

## *Midway Gold - [www.midwaygold.com](http://www.midwaygold.com)*

### PAN – RESOURCE EXPANSION POTENTIAL



#### GEOLOGY OVERVIEW

- Sediment hosted Carlin-style gold system
- Gold hosted in solution breccia
- Large scale: 3,700m long x 300m wide

#### NUMEROUS UNTESTED TARGETS

- Open to North
  - Favorable host rocks & structure
- Open to South East
  - 2011 drilling confirmed Wendy zone extension
  - Barite zone untested by drilling
- Open to depth
  - 20% of historic drilling ended in mineralization
  - Shallow Central Pan untested
- Untested cross structures
  - Potential to connect North & South Pan

#### OVERVIEW OF PAN RESOURCE GROWTH

- 2010 43-101 Resource
  - 1978-2010 drilling
  - 879 holes
  - 73,623m
- 2011 43-101 Resource
  - 2011 drilling
  - 33 holes
  - 8,456m



**Oxidized  
sediment  
hosted Carlin-  
style gold  
system**



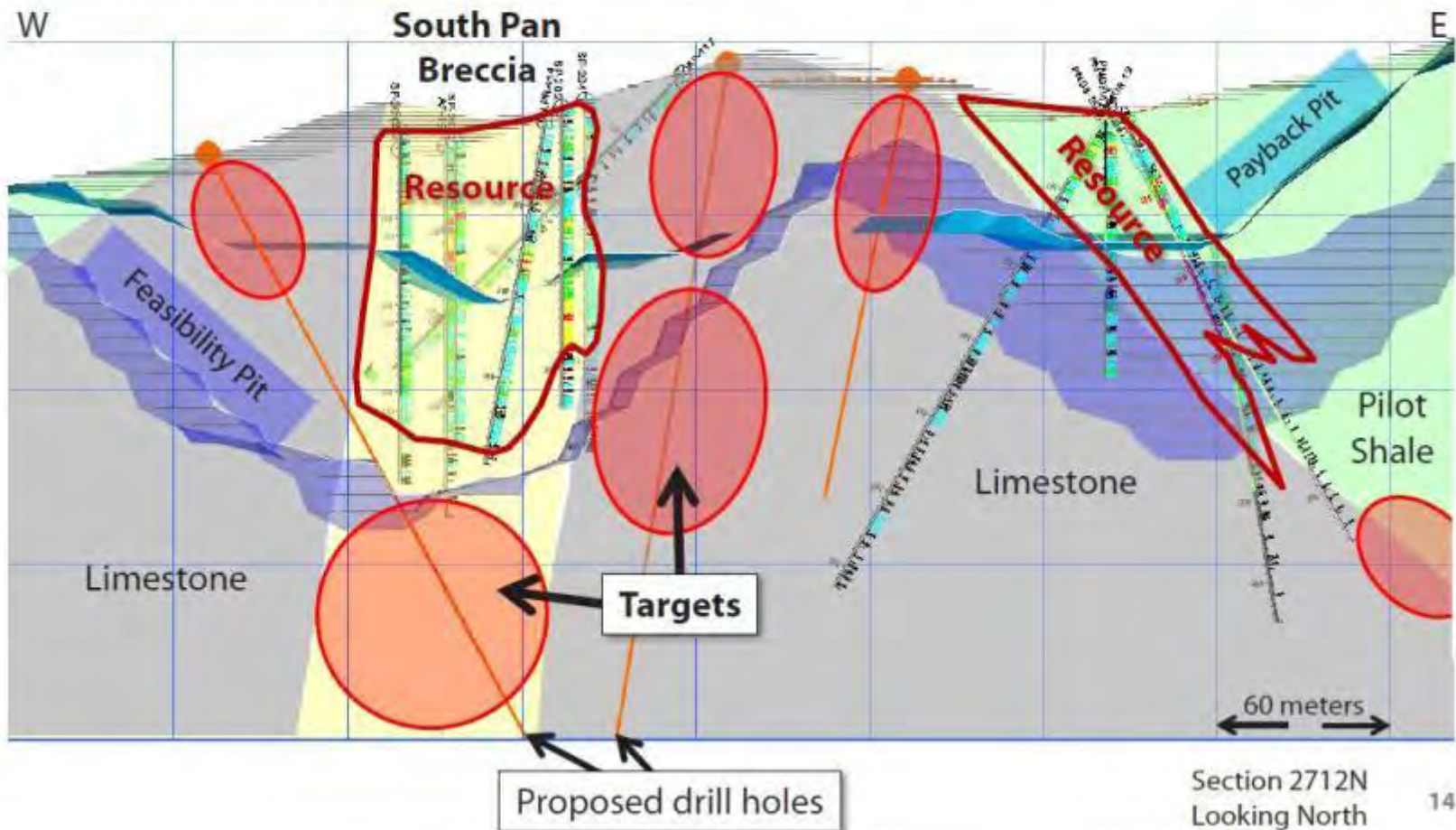
# PAN - Midway Gold

## PAN - EXPANSION POTENTIAL



MIDWAY GOLD

### SOUTH PAN EXAMPLE





## **PAN - *Midway Gold***

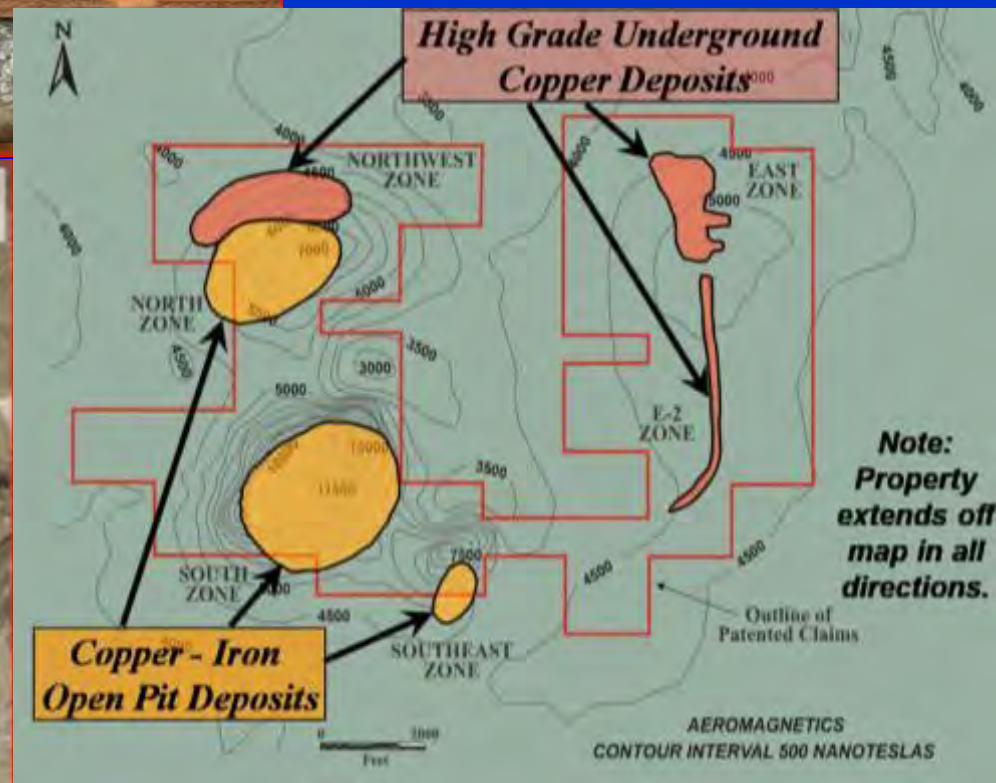
- **P&P reserve of 864,000 oz Au at 0.56 g/t**
- **Simple low cost project with capex of \$99M**
- **Open pit/heap leach with low strip ratio (1.8:1)**
- **Mine life of 9 years, annual production 81,000 oz**
- **Draft EIS to be submitted in late 2012/early 2013**
- **Production expected in 2014**
- **Numerous untested targets on property**

# PUMPKIN HOLLOW - Lyon Co.

*Nevada Copper - [www.nevadacopper.com](http://www.nevadacopper.com)*



High grade  
copper/magnetite skarn  
associated with a copper  
porphyry system



# PUMPKIN HOLLOW

## *Nevada Copper*

Proven and probable mineral reserves:

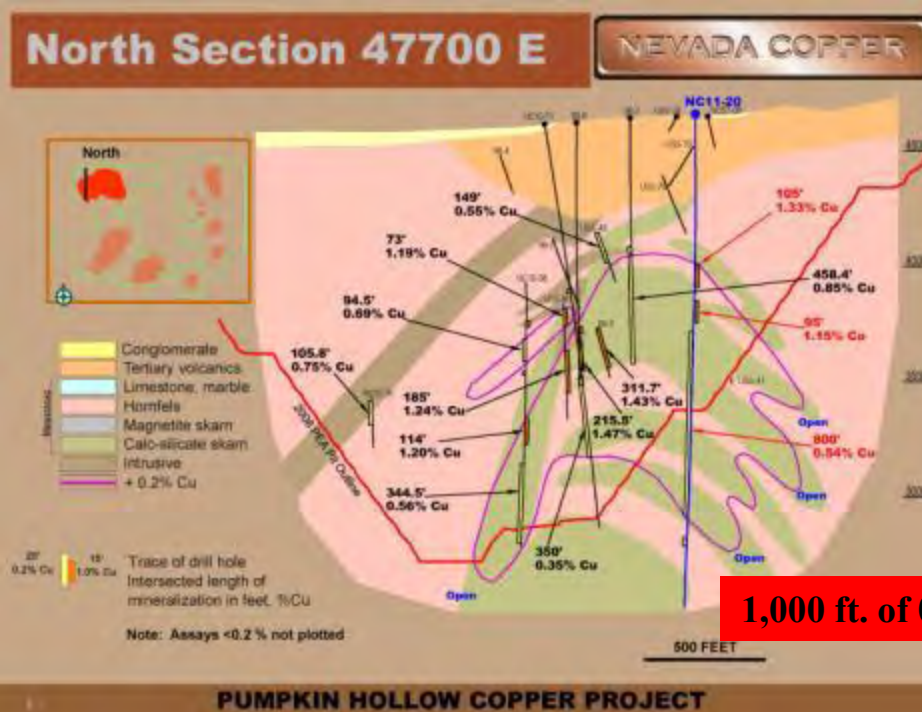
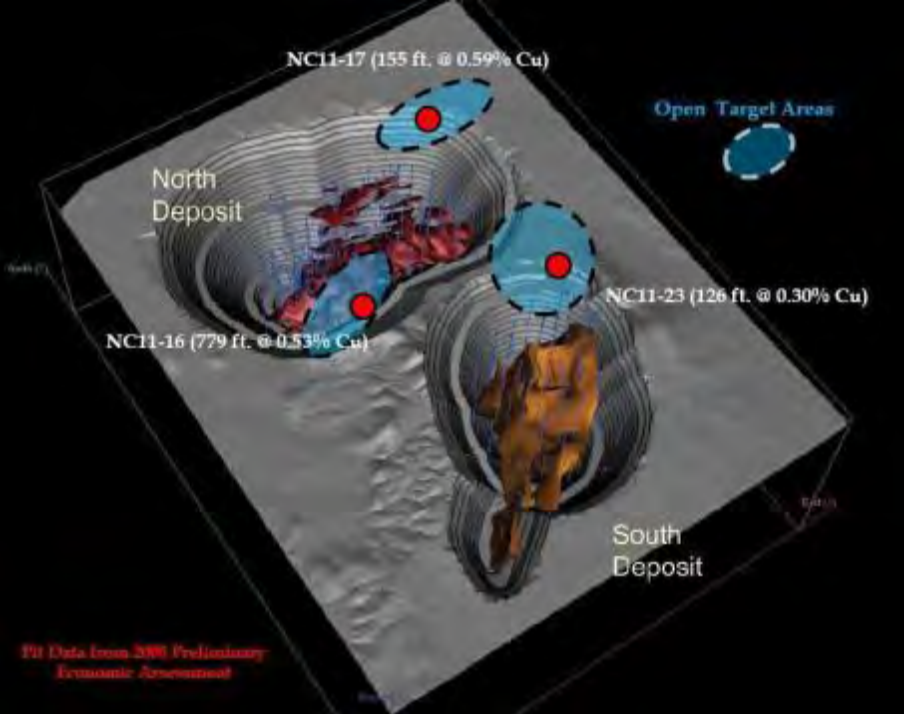
4.29 billion lbs of Cu

952,000 oz of Au

27.3 million oz of Ag

Measured and indicated iron mineral resource:

128.9 million tons Fe



1,000 ft. of 0.68% Cu



# **PUMPKIN HOLLOW - *Nevada Copper***

- **OP and UG operation - capital cost of \$1.04 B**
- **60,000 tpd open pit and 7,500 tpd underground feeding a single 67,500 tpd concentrator**
- **Mine life of 18 years with Cu of 226 M lbs per year**
- **Positive feasibility study for Stage 1 underground East Deposit and 6,500 tpd processing facility**
- **Production targeted for mid-2015 pending Federal land transfer to the City of Yerington**
- **2,200 ft. mine shaft under construction**

# SPRING VALLEY - Pershing Co

*Midway Gold (JV with Barrick)*

[www.midwaygold.com](http://www.midwaygold.com)

[www.barrick.com](http://www.barrick.com)

Porphyry/diatreme hosted gold system with significant amounts of coarse native gold



## Other Spring Valley Targets:

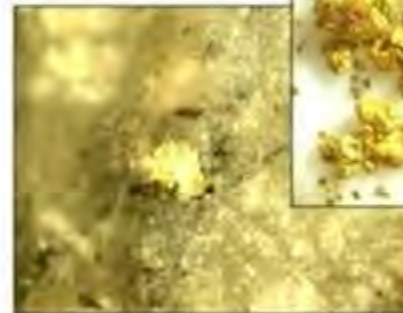


- |                      |                        |                 |                         |
|----------------------|------------------------|-----------------|-------------------------|
| 1 - Golden Gate      | 4 - Spring Valley Pass | 7 - New Pipe    | 10 - North JL           |
| 2 - Limerick - Hagen | 5 - King David         | 8 - Fitting     | 11 - American Canyon    |
| 3 - Gold Mtn         | 6 - Dry Gulch          | 9 - North Ridge | 12 - Spring Valley West |



SV05-88  
24 1mm gold grains in pan concentrate  
from a 5 foot run of RC drilling:  
Minimum grade = 3.4 g/t

SV05-74  
Gold in RC cuttings



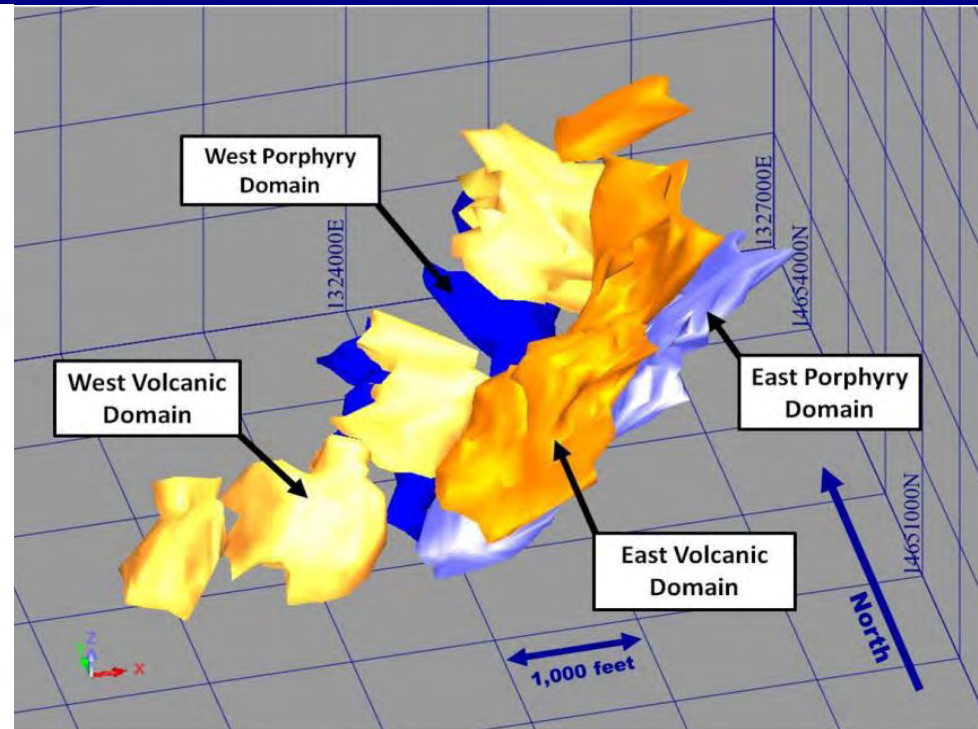
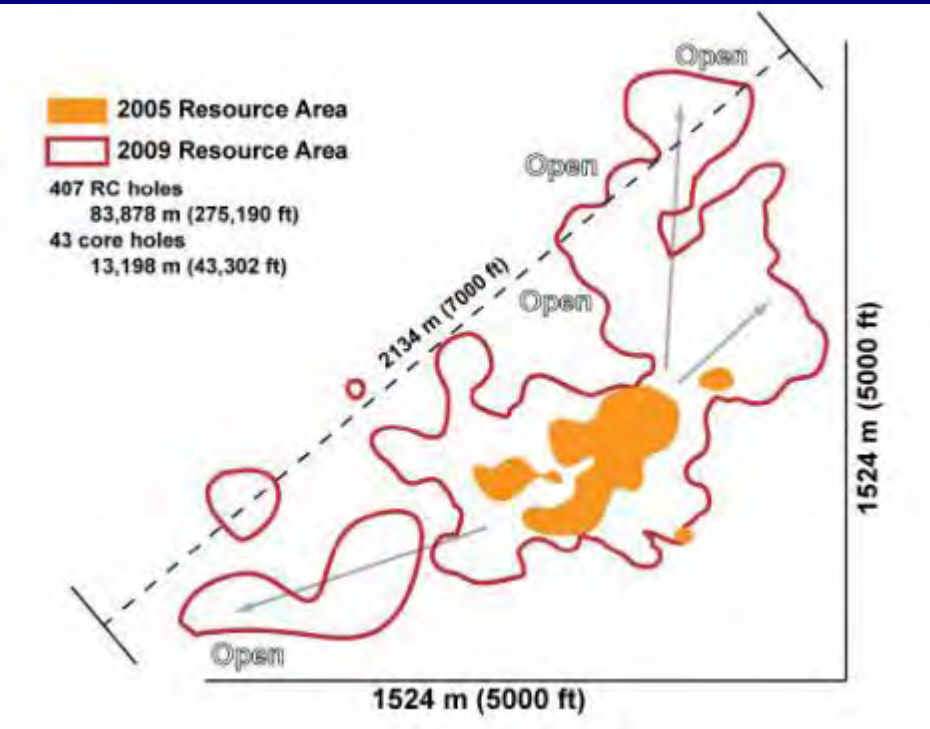
SV05-67c  
Gold in 2mm wide quartz vein



SV05-68c  
Gold in 15 cm wide quartz vein

**Spring Valley  
Coarse Gold**

# SPRING VALLEY - *Midway Gold / Barrick*



- May, 2011 resource estimate: 2.16 million oz gold measured and indicated and additional 1.97 million oz gold inferred
- Barrick continues earn in (\$17.7 M 2009 to 2011, \$11.5 M budgeted 2012, must spend \$30M by 2013 for 60% interest



# SPRING VALLEY - *Midway Gold / Barrick*

## SPRING VALLEY - WHY IT WILL WORK



MIDWAY GOLD

### INFRASTRUCTURE SUPPORTS PROJECT GRADE

- Nearby community
- Paved road to site
- Power line on site
- Nearby Interstate hwy
- Nearby railroad
- Known mining area



### BARRICK 2012

- Work completed in 2012
  - Exploration drilling
  - Deposit modeling
  - Metallurgical tests (in progress)
  - Hydrology studies
  - Internal scoping study (in progress)

### MIDWAY PLAN FOR 2013

- Resource update
- Preliminary economic assessment

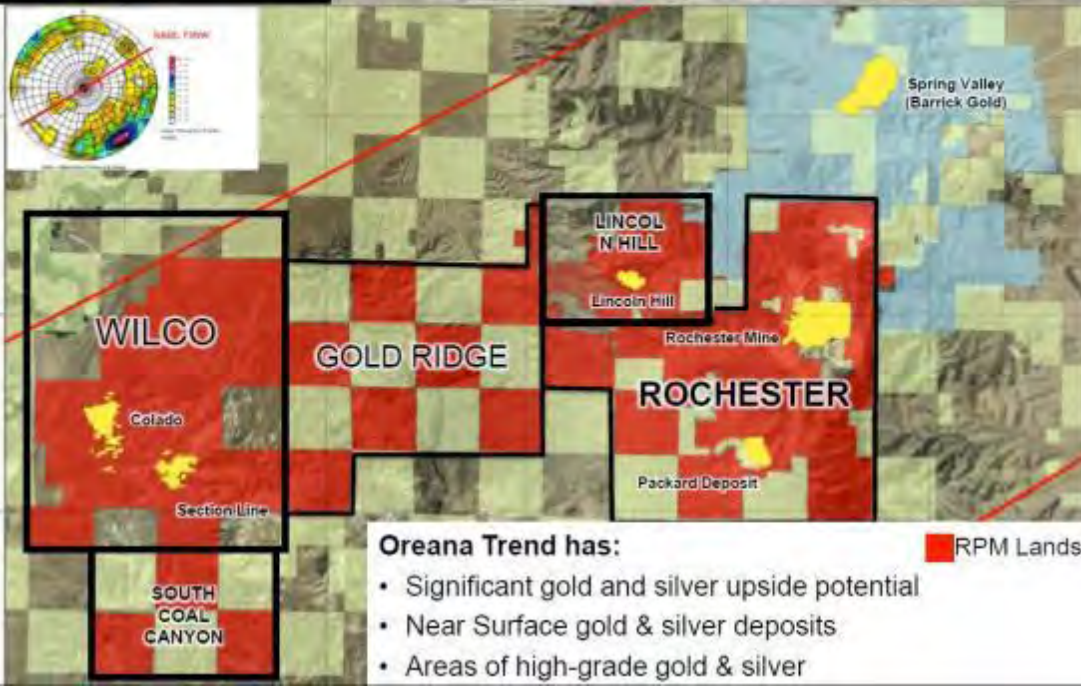
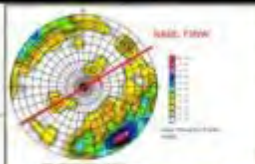
# WILCO – Pershing Co.

## *Rye Patch Gold – [www.ryepatchgold.com](http://www.ryepatchgold.com)*

Epithermal, low-sulfidation (quartz adularia) type gold deposit at the contact between Tertiary volcanics and Mesozoic sediments



### Oreana Trend Projects



Oreana Trend has:

- Significant gold and silver upside potential
- Near Surface gold & silver deposits
- Areas of high-grade gold & silver

RPM Lands



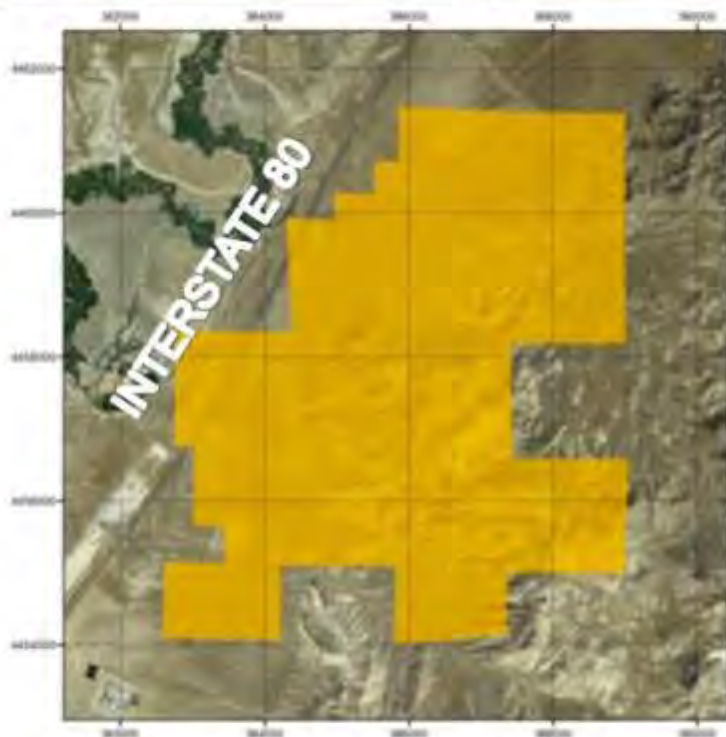


# WILCO - *Rye Patch Gold*



Rye Patch  
GOLD CORP.

## Wilco Project



- 100% controlled, Newmont farm out
- 100 miles (160 km) NE of Reno, NV
- Adjacent to Interstate 80 on flank of West Humboldt Range

### Wilco NI 43-101 In-Pit Resource (June 2012)

Category	Gold Ounces	Silver Ounces	Aueq Ounces
M & I	1,278,000	10,304,000	1,484,000
Inferred	541,000	6,100,000	663,000

- Within Oreana Au-Ag trend near Florida Canyon (3Moz Au) and 8 miles west of Rochester silver mine (125Moz Ag)
- 8,500 acres (14 square miles) consisting of public and privates lands



# WILCO - Rye Patch Gold



Rye Patch  
GOLD CORP.

## Rochester Project

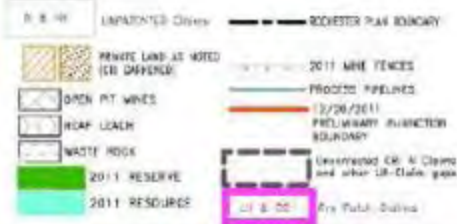
\* Data & Map Source: Coeur d'Alene Mines Corporation presentations - Denver Gold Forum (September 11, 2012) and the Spokane Silver Summit (October 25, 2012)

### Rochester Claim Dispute Property Map

#### Map Legend

COEUR  
ROCHESTER

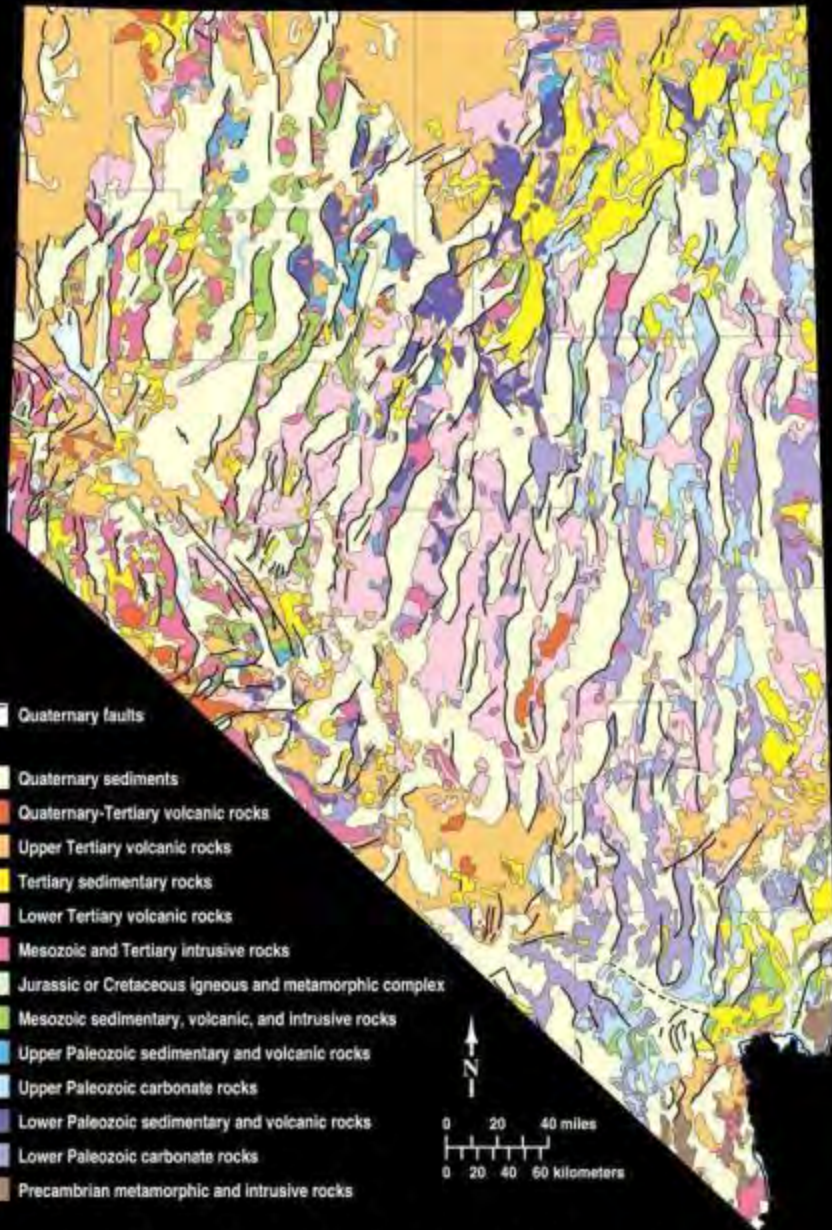
ROCHESTER MINE  
RESERVE & RESOURCE



### Undisputed Claims – Coeur

#### LH Claims – Rye Patch

- No mineral resources
- No assurance mineral resources will be established
- Rye Patch is aggressively defending its mineral title
- Trial September 2013



Generalized Geologic Map of Nevada

# Ten Top Reasons to Explore in Nevada

1. Great geology and mineral potential
2. Many large producing mines, including high-grade, underground mines
3. Mines operated by leading international companies





**4. Regulatory system with recent examples of rapid permitting**

**5. Good infrastructure (roads, drillers, hotels supplies, assayers, etc.)**

**6. Large areas of public land open to exploration**

**7. Dry climate and year round access**





## **8. Network of knowledgeable exploration geologists, organizations, and agencies**

**(Geological Society of Nevada, Nevada Mining Association, Nevada Mineral Exploration Coalition, Nevada Division of Minerals, Nevada Bureau of Mines & Geology, Ralph Roberts Center for Research in Economic Geology, and other units of the Mackay School of Earth Sciences and Engineering)**

## **9. Recent discoveries and new mines**

# Ten Top Reasons to Explore in Nevada (continued)

10. No malaria,  
black flies, moose,  
polar bears, desert  
death adders, or  
crocodiles;  
**just elephants!**



# THE MAIN POINT

## 10 Year Gold

High 1900.30 Low 320.00



Nevada is a really great place to explore for and mine gold - and many other mineral commodities.

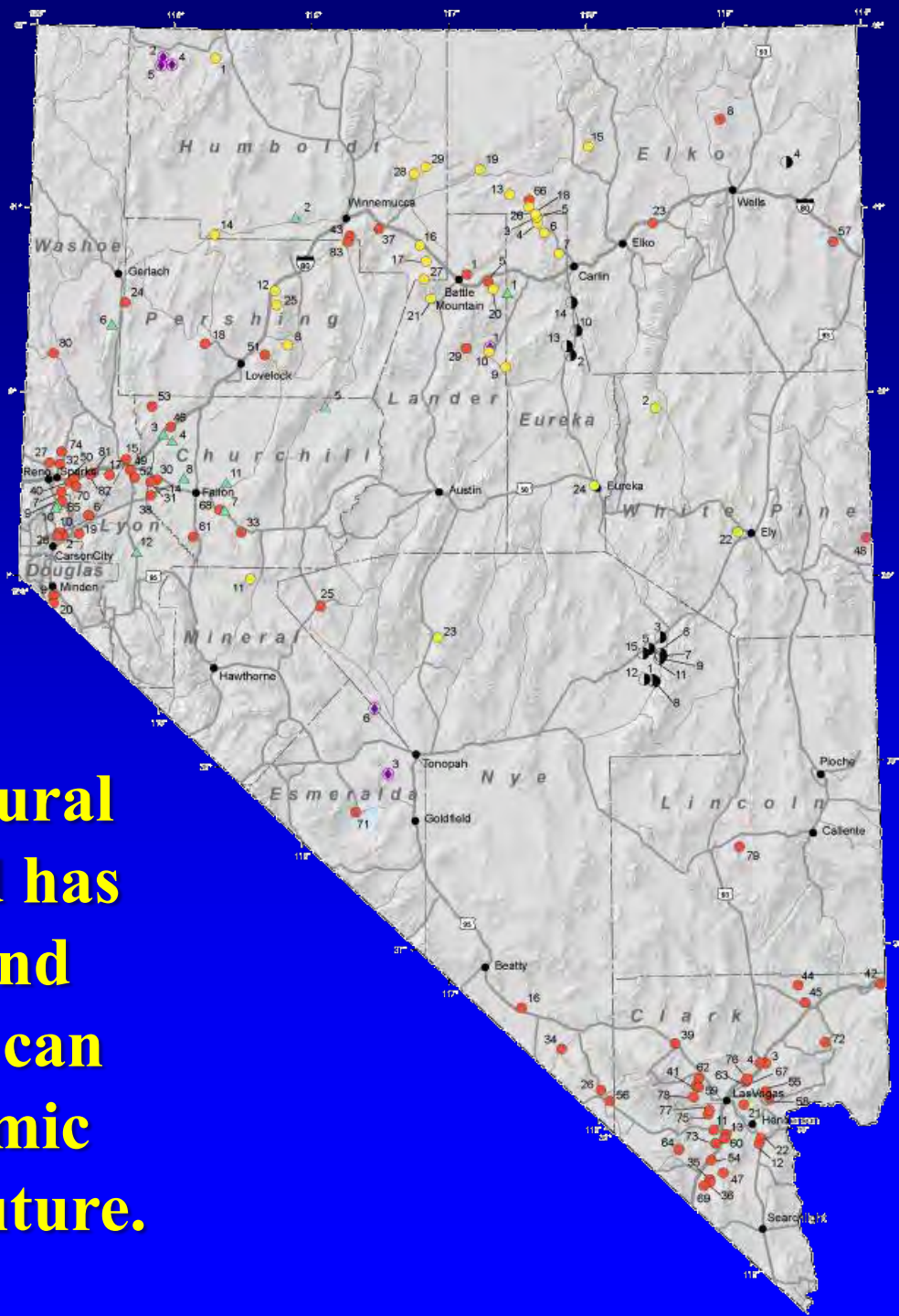
[www.kitco.com](http://www.kitco.com)

Based on New York Close





**Nevada is a major natural resource producer and has significant mineral and energy resources that can provide strong economic development into the future.**





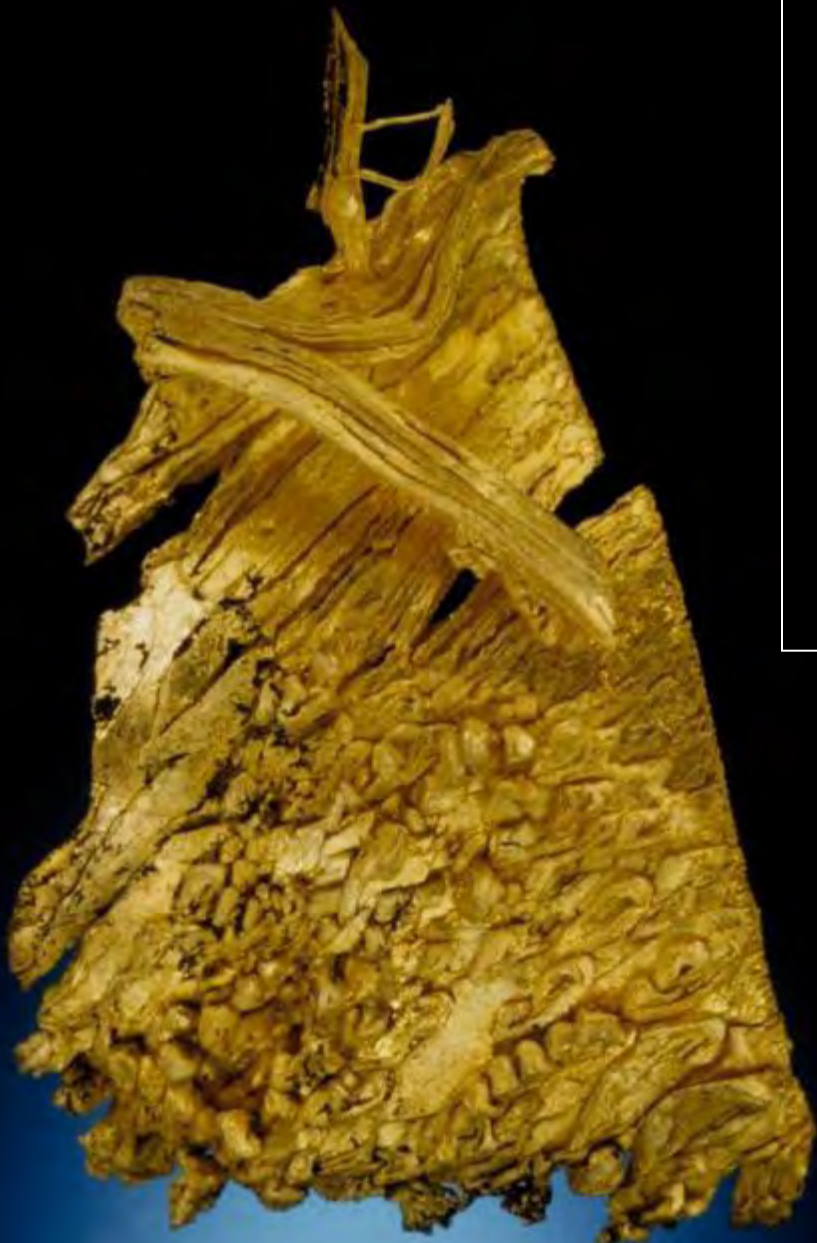
**THANK  
YOU!**



**Round Mountain  
55 pounds (802 troy oz)  
@\$1,710/oz =  
\$1.37 million**

**05/18/2006**





Gold, Round Mountain

**Jonathan G. Price**  
**Nevada Bureau of Mines and Geology**  
**University of Nevada, Reno MS 178**  
**Reno, NV 89557**  
**775/684-6691**  
**[jprice@unr.edu](mailto:jprice@unr.edu)**  
**[www.nbmgs.unr.edu](http://www.nbmgs.unr.edu)**



Opal, Virgin Valley





Gold, Round Mountain

**Alan R. Coyner**  
**Nevada Division of Minerals**  
**400 W. King St. #106**  
**Carson City, NV 89703**  
**775/684-7047**  
**[acoyner@govmail.state.nv.us](mailto:acoyner@govmail.state.nv.us)**  
**[minerals.state.nv.us](http://minerals.state.nv.us)**



Opal, Virgin Valley