



NEVADA DEPARTMENT OF TAXATION
Division of Local Government Services

REAL PROPERTY TRANSFER TAX

Fiscal Year 2015-16 REPORT
July 1, 2015 to June 30, 2016

Including 4th Quarter Results (April 1, 2016 to June 30, 2016)

Division of Local Government Services

REAL PROPERTY TRANSFER TAX

Fiscal Year 2015-16 REPORT

July 1, 2015 to June 30, 2016

Department of Taxation
Division of Local Government Services
1550 E. College Parkway, Suite 115
Carson City, NV 89706
Phone 775.684.2100 • Fax 775.684.2020

Published: August 16, 2016

Revised: 11-18-2016

Table of Contents

RESULTS	1
Background	1
Tax Totals.....	1
Distribution of Tax	3
Exemptions	6
Historical Trends	10
Reconciliation.....	16
ADMINISTRATION OF THE REAL PROPERTY TRANSFER TAX.....	17
Authority and Oversight	17
Calculation and Collection of the Tax	17
Collection Allowance.....	18
Distribution of the Tax	19

RESULTS

Background

The Real Property Transfer Tax (RPTT) is collected in each county when deeds¹ are presented for recording, with some exceptions². Tax rates vary in each county³ and range from \$1.95 to \$2.55 per \$500 of value⁴ or fraction thereof. The amounts collected are then distributed to various funds at the county and State levels. The statutes related to RPTT are contained in Nevada Revised Statutes (NRS) Chapter 375. The regulations for the tax are contained in Nevada Administrative Code (NAC) Chapter 375. For a more complete description of the tax, please refer to the next section, Administration of the Real Property Transfer Tax.

Tax Totals

The following table shows the total tax⁵ by county for the fourth quarter of Fiscal Year 2015-16 (FY15-16) (April 1, 2016 to June 30, 2016) and for the entire FY15-16 (July 1, 2015 to June 30, 2016) sorted by the full fiscal year amounts. Approximately 93.34% (~\$37.47 million) of the total tax (~\$40.15 million) for the 4th Quarter of FY15-16 relates to transactions in Clark County and Washoe County. Approximately 93.71% (~\$133.46 million) of the total tax (~\$142.42 million) for the FY15-16 relates to the transactions in Clark County and Washoe County.

County	4th Quarter Amount	4th Quarter %	FY15-16 Amount	FY15-16 %
Total	\$40,145,507.45	100.00%	\$142,415,861.66	100.00%
CLARK	\$31,714,712.10	79.00%	\$112,731,935.01	79.16%
WASHOE	\$5,756,982.20	14.34%	\$20,731,955.45	14.56%
DOUGLAS	\$756,724.80	1.88%	\$2,650,769.65	1.86%
LYON	\$563,460.30	1.40%	\$1,573,053.30	1.10%
CARSON CITY	\$393,061.50	0.98%	\$1,268,476.95	0.89%
ELKO	\$280,647.90	0.70%	\$995,749.95	0.70%
NYE	\$239,190.90	0.60%	\$891,536.10	0.63%
CHURCHILL	\$154,432.65	0.38%	\$453,173.00	0.32%
HUMBOLDT	\$92,449.50	0.23%	\$316,017.00	0.22%
STOREY	\$33,522.45	0.08%	\$217,955.40	0.15%
WHITE PINE	\$26,188.50	0.07%	\$174,396.30	0.12%
LANDER	\$42,217.50	0.11%	\$94,953.30	0.07%
LINCOLN	\$32,839.95	0.08%	\$90,784.20	0.06%
PERSHING	\$17,005.95	0.04%	\$86,219.25	0.06%
EUREKA	\$5,684.25	0.01%	\$74,856.60	0.05%
MINERAL	\$34,111.35	0.08%	\$58,026.15	0.04%
ESMERALDA	\$2,275.65	0.01%	\$6,004.05	0.00%

¹ Per NRS 375.010(1)(b) a deed essentially means any instrument that transfers an estate or present interest in real property, regardless of the name of the document, with certain exceptions.

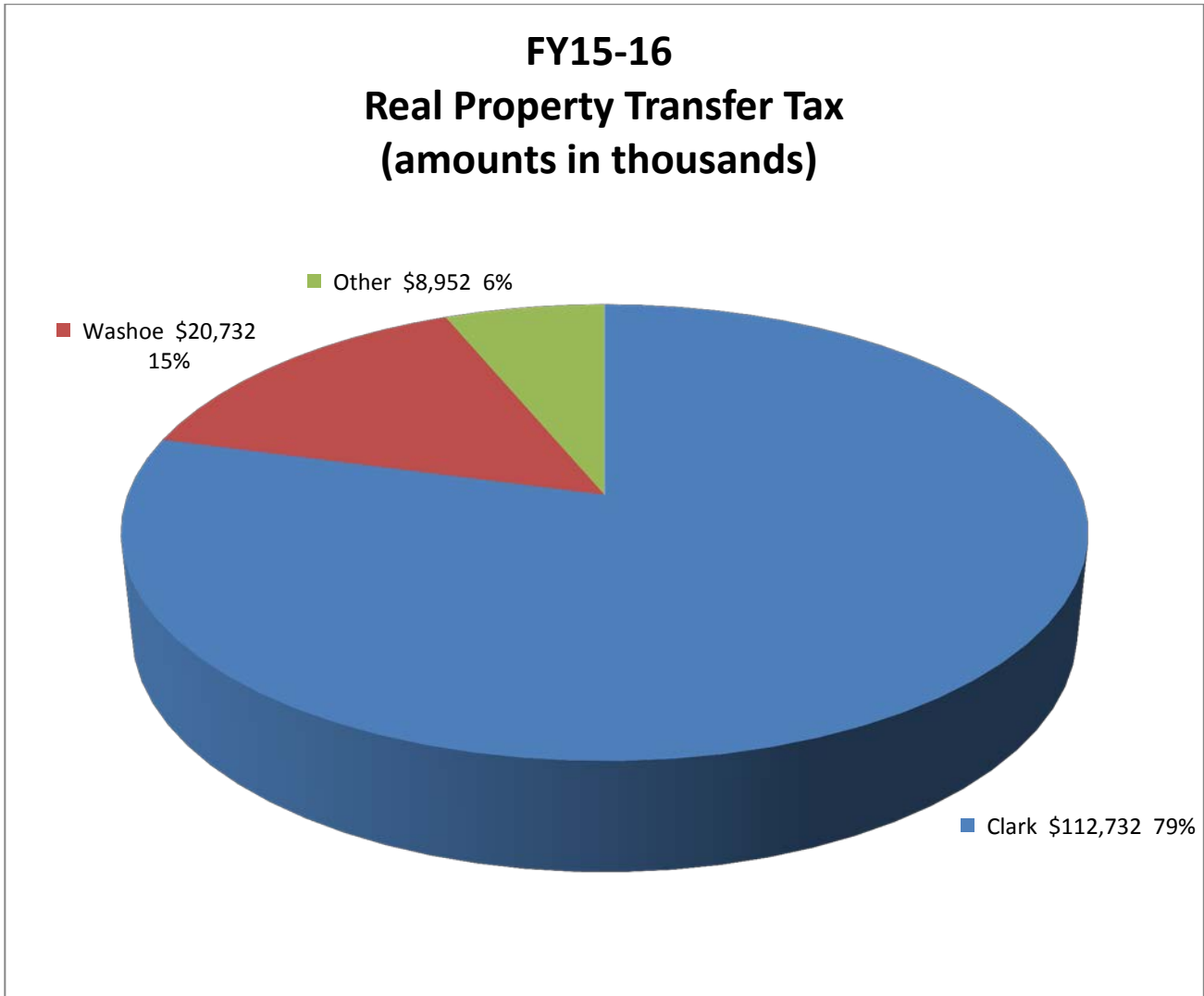
² Non-taxable events (exceptions) are listed in NRS 375.010(1)(b), exemptions are listed in NRS 375.090

³ See Table in the next section for a table of the rates and distribution in each county.

⁴ NRS 375.020 through 375.026 impose tax “for each \$500 of value or fraction thereof...if the consideration or value of the interest or property conveyed exceeds \$100”

⁵ Amounts in table are from Recorders Monthly Report; minor adjustments for refunds or timing differences are excluded

The total tax for FY15-16 is depicted graphically below:



Transactions in Washoe County and Clark County account for approximately 93.71% of the total Real Property Transfer Tax in FY15-16. Transactions in the other 15 counties account for the remaining 6.29%. The total tax is approximately \$142,416,000.

Distribution of Tax

The following table shows the distribution of the tax for FY15-16 (July 1, 2015 to June 30, 2016). The “Level of Government” heading indicates where the tax is ultimately used.

<i>Level of Govt</i>	<i>State</i>	<i>County</i>	<i>County</i>	<i>County</i>	<i>State</i>	<i>County</i>
	General Fund⁶	Collection Allowance⁷	Consolidated Tax⁸	School District⁹	Low Income Housing¹⁰	Local Govt Tax Act¹¹
TOTAL	\$75,805,804.52	\$765,715.20	\$32,395,642.96	\$26,525,161.18	\$5,890,116.90	\$1,033,420.90
CLARK	\$56,896,470.73	\$574,711.83	\$24,314,731.08	\$26,525,161.18	\$4,420,860.20	
WASHOE	\$13,015,622.76	\$131,470.94	\$5,562,231.95		\$1,011,314.90	\$1,011,314.90
DOUGLAS	\$1,749,507.97	\$17,671.80	\$747,652.98		\$135,936.91	
LYON	\$1,038,215.18	\$10,487.02	\$443,681.70		\$80,669.40	
CARSON CITY	\$837,194.79	\$8,456.51	\$357,775.55		\$65,050.10	
ELKO	\$657,194.97	\$6,638.33	\$280,852.55		\$51,064.10	
NYE	\$588,413.83	\$5,943.57	\$251,458.90		\$45,719.80	
CHURCHILL	\$284,504.22	\$2,873.78	\$121,583.00		\$22,106.00	\$22,106.00
HUMBOLDT	\$208,571.22	\$2,106.78	\$89,133.00		\$16,206.00	
STOREY	\$143,850.56	\$1,453.04	\$61,474.60		\$11,177.20	
WHITE PINE	\$115,101.56	\$1,162.64	\$49,188.70		\$8,943.40	
LANDER	\$62,669.18	\$633.02	\$26,781.70		\$4,869.40	
LINCOLN	\$59,917.57	\$605.23	\$25,605.80		\$4,655.60	
PERSHING	\$56,904.71	\$574.80	\$24,318.25		\$4,421.50	
EUREKA	\$49,405.36	\$499.04	\$21,113.40		\$3,838.80	
MINERAL	\$38,297.26	\$386.84	\$16,366.35		\$2,975.70	
ESMERALDA	\$3,962.67	\$40.03	\$1,693.45		\$307.90	

⁶ Per NRS 375.023, the tax rate includes \$1.30 per \$500 of value or fraction thereof for the State General Fund. The amount in the table is net of the collection allowance per NRS 375.023(4).

⁷ Per NRS 375.023(4), counties are entitled to 1% of the State’s \$1.30 portion of the taxes collected to defray the County’s administrative costs associated with the tax.

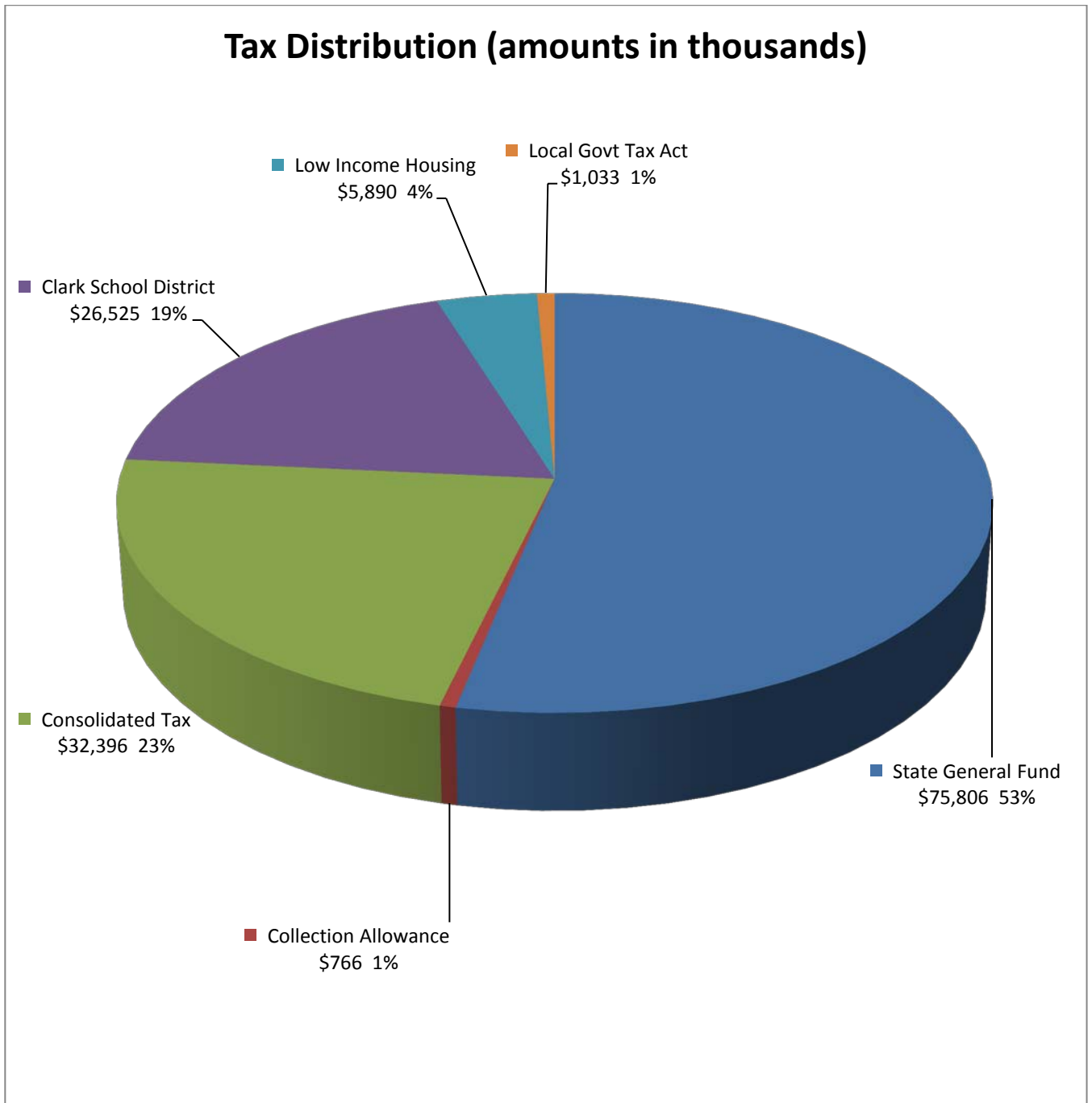
⁸ Per NRS 375.020, the tax rate includes \$0.65 per \$500 of value or fraction thereof. Of this amount, \$0.55 (NRS 375.070(1)(c) is distributed to the Local Government Tax Distribution Account, where it is combined with the proceeds of other taxes and becomes part of the Consolidated Tax or CTX (See NRS 360.660). The CTX is ultimately distributed back to counties. The remaining \$0.10 (NRS 375.070(1)(a)) is distributed to the state administered Low-Income Housing program created per NRS 319. In Clark County an additional \$0.60 is added which is distributed to the Clark County School District NRS 375.070(1)(b).

⁹ Ultimately distributed to the County School District. See note 8.

¹⁰ Ultimately distributed to the State account for Low-Income Housing, created pursuant to NRS 319.500. See note 8.

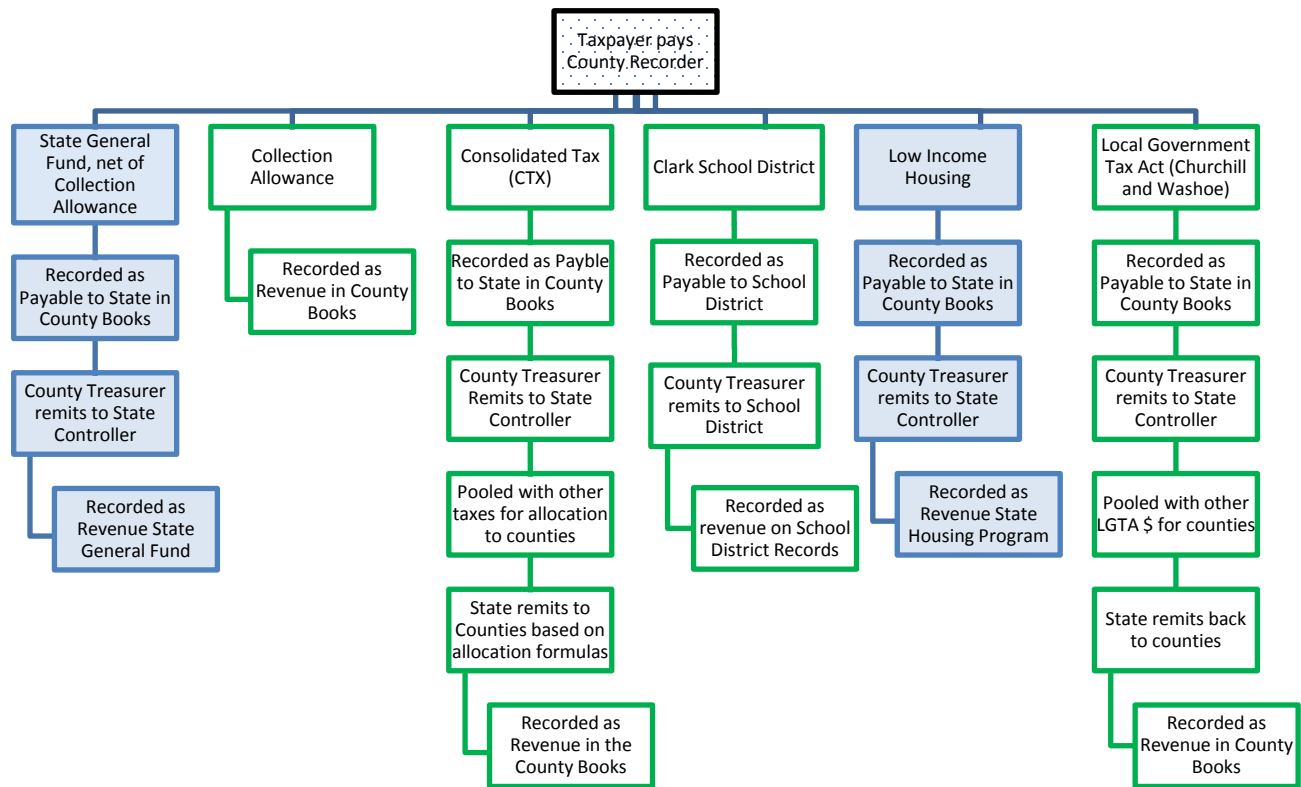
¹¹ The Local Government Tax Act (LGTA) was passed in 1991 and can be found in the Special Acts section at the following link. <http://leg.state.nv.us/SpecialActs/48-LocalGovernmentTax1991.html>. See Section 32. Please also see the updated LGTA of 1993. This act allows certain counties, by local ordinance, to levy an additional tax of \$0.10 per \$500 of value or fraction thereof. Currently only Churchill County and Washoe County levy the tax. The tax is ultimately distributed back to the County through the Tax Distribution Fund.

The distribution of the tax for FY15-16 is depicted graphically as follows:



The proceeds allocated to the State General Fund (net of collection allowance) and to Low-Income Housing are ultimately used at the State level. The remaining proceeds are ultimately used at the local government level.

The total tax collected by the County Recorder is posted to various accounts in the County books and records. A portion of the amount collected is retained by the County. The retained amount consists of the collection allowance and School District amount (currently only in Clark County). The remaining portions (Consolidated Tax (CTX), State General fund (net of collection allowance), Low Income Housing, and Local Government Tax Act) are remitted by the County Treasurer to the State Controller for further distribution. CTX is ultimately combined with other taxes and distributed back to the Counties based on statutory allocation formulas. Similarly, the LGTA is combined with other LGTA taxes and distributed back to the counties. The following flowchart shows the flow of the tax through the various systems. The blue indicates proceeds ultimately used at the state level. The green indicates proceeds ultimately used at the local government level.



See the distribution table and graph on the prior two pages for amounts distributed per the above flowchart for FY15-16.

Exemptions

The total number of deeds filed with the County Recorders for the 4th Quarter (April 1, 2016 through June 30, 2016) of FY15-16 (July 1, 2015 through June 30, 2016) and the full fiscal are shown in the following tables together with the number of each type of exemption. The exemption numbers correspond with the subparagraphs of NRS 375.090 as follows:

NRS 375.090 Exemptions. The taxes imposed by [NRS 375.020](#), [375.023](#) and [375.026](#) do not apply to:

1. A mere change in identity, form or place of organization, such as a transfer between a business entity and its parent, its subsidiary or an affiliated business entity if the affiliated business entity has identical common ownership.
 2. A transfer of title to the United States, any territory or state or any agency, department, instrumentality or political subdivision thereof.
 3. A transfer of title recognizing the true status of ownership of the real property, including, without limitation, a transfer by an instrument in writing pursuant to the terms of a land sale installment contract previously recorded and upon which the taxes imposed by this chapter have been paid.
 4. A transfer of title without consideration from one joint tenant or tenant in common to one or more remaining joint tenants or tenants in common.
 5. A transfer, assignment or other conveyance of real property if the owner of the property is related to the person to whom it is conveyed within the first degree of lineal consanguinity or affinity.
 6. A transfer of title between former spouses in compliance with a decree of divorce.
 7. A transfer of title to or from a trust without consideration if a certificate of trust is presented at the time of transfer.
 8. Transfers, assignments or conveyances of unpatented mines or mining claims.
 9. A transfer, assignment or other conveyance of real property to a corporation or other business organization if the person conveying the property owns 100 percent of the corporation or organization to which the conveyance is made.
 10. A conveyance of real property by deed which becomes effective upon the death of the grantor pursuant to [NRS 111.655](#) to [111.699](#), inclusive.
 11. The making, delivery or filing of conveyances of real property to make effective any plan of reorganization or adjustment:
 - (a) Confirmed under the Bankruptcy Act, as amended, 11 U.S.C. §§ 101 et seq.;
 - (b) Approved in an equity receivership proceeding involving a railroad, as defined in the Bankruptcy Act; or
 - (c) Approved in an equity receivership proceeding involving a corporation, as defined in the Bankruptcy Act,
➔ if the making, delivery or filing of instruments of transfer or conveyance occurs within 5 years after the date of the confirmation, approval or change.
 12. A transfer to an educational foundation. As used in this subsection, “educational foundation” has the meaning ascribed to it in subsection 3 of [NRS 388.750](#).
 13. A transfer to a university foundation. As used in this subsection, “university foundation” has the meaning ascribed to it in subsection 3 of [NRS 396.405](#).
- (Added to NRS by 1967, 1761; A 1969, 569; 1971, 246; 1985, 862, 2046; 1991, 1122, 2053; 1993, 2308, 2624; 1995, 716, 1037; [2001, 1593](#); [2003, 3486](#); [2003, 20th Special Session, 172, 174](#); [2005, 962, 2057, 2488](#); [2007, 3393](#); [2009, 1112](#); [2011, 1354](#))

Number of Exemptions for the full fiscal year (FY15-16)

	% of Total Transfers	Total Transfers	Exempt Transfers	% of Total Exemptions	% of Transfers Exempted	1	2	3	4	5	6	7	8	9	10	11	12	13
Total	100.0%	222,305	74,463	100.00%	33.50%	996	2,027	10,776	3,025	26,371	1,315	25,305	331	1,960	2,345	5	3	4
CLARK	77.62%	172564	52,257	70.18%	30.28%	726	1,282	7,329	2,281	20,174	771	16,889	16	1,457	1,324	3	2	3
WASHOE	10.95%	24352	11,138	14.96%	45.74%	149	198	1,589	373	3,387	289	4,575	6	233	337	1	1	0
DOUGLAS	2.61%	5801	1,934	2.60%	33.34%	7	30	310	50	430	63	911	3	30	100	0	0	0
NYE	2.11%	4682	2,190	2.94%	46.77%	30	103	306	89	537	21	916	28	34	125	0	0	1
LYON	1.62%	3602	1,587	2.13%	44.06%	22	77	276	73	459	40	483	5	51	101	0	0	0
ELKO	1.41%	3127	1,253	1.68%	40.07%	12	31	265	40	396	53	311	31	27	87	0	0	0
CARSON CITY	1.05%	2329	1,167	1.57%	50.11%	4	20	145	33	278	7	558	0	37	84	1	0	0
CHURCHILL	0.60%	1338	686	0.92%	51.27%	9	102	166	16	161	9	150	17	21	35	0	0	0
HUMBOLDT	0.49%	1085	537	0.72%	49.49%	12	68	66	18	122	23	136	16	13	63	0	0	0
PERSHING	0.32%	705	315	0.42%	44.68%	8	5	85	10	64	1	55	54	21	12	0	0	0
WHITE PINE	0.30%	664	382	0.51%	57.53%	3	69	66	7	107	11	79	23	4	13	0	0	0
LINCOLN	0.20%	436	217	0.29%	49.77%	0	8	27	7	62	4	59	11	18	21	0	0	0
STOREY	0.19%	428	222	0.30%	51.87%	8	16	37	9	63	5	73	0	3	8	0	0	0
LANDER	0.18%	409	172	0.23%	42.05%	2	8	29	2	59	11	38	12	3	8	0	0	0
MINERAL	0.15%	342	157	0.21%	45.91%	0	4	29	12	39	1	30	17	3	22	0	0	0
ESMERALDA	0.10%	230	142	0.19%	61.74%	1	3	38	1	17	1	15	62	2	2	0	0	0
EUREKA	0.09%	211	107	0.14%	50.71%	3	3	13	4	16	5	27	30	3	3	0	0	0

Per the tables and graphs under the heading “Tax Totals,” transactions in Washoe County and Clark County account for approximately 93.71% of the tax dollars. The above table indicates that transactions in Washoe County and Clark County account for approximately 87.71% of the total number of transfers. Transactions in the other 15 counties account for approximately 12.29% of the total number of transfers.

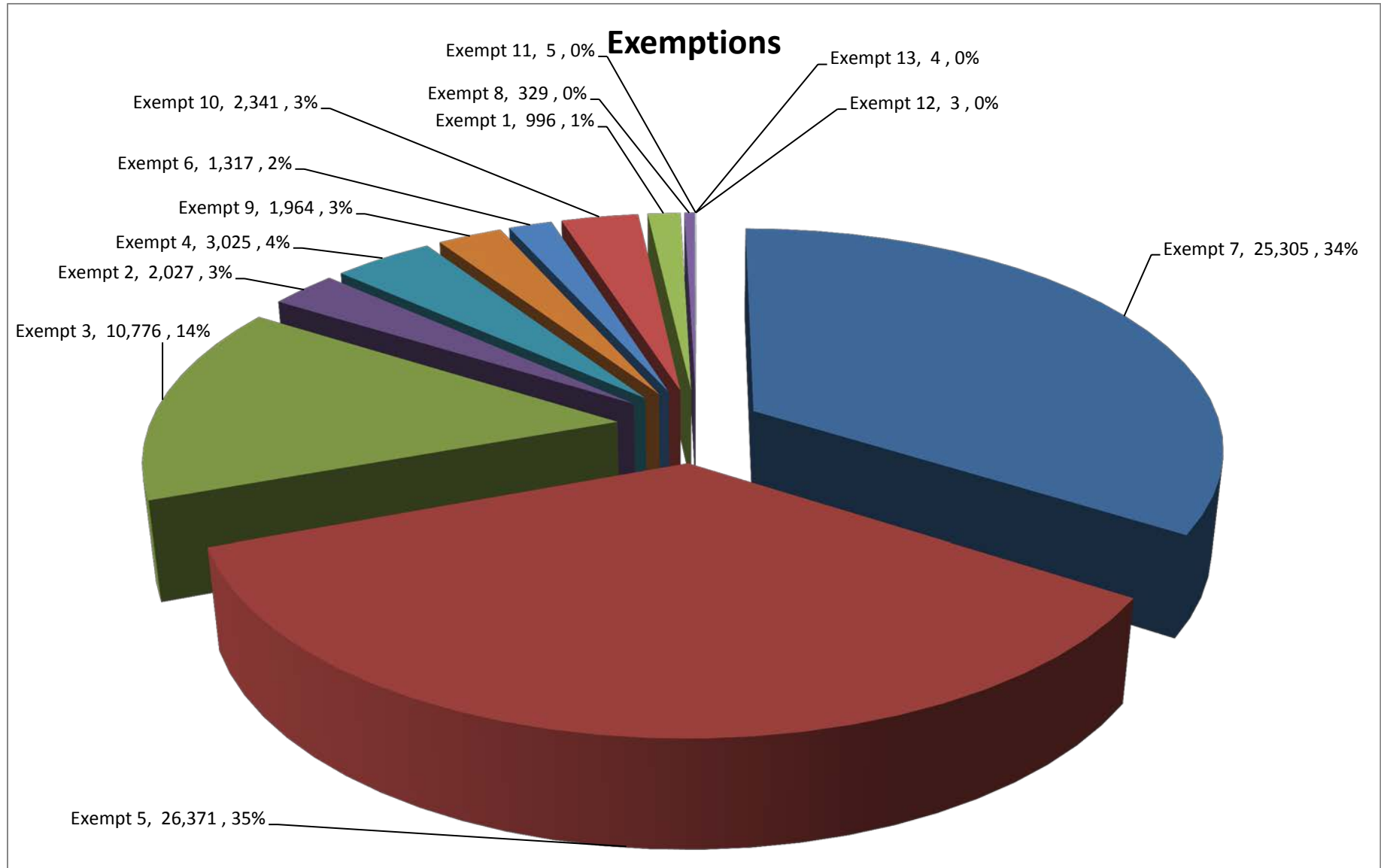
There were some corrections in prior quarters. Prior quarters are re-stated in Appendix A.

Number of Exemptions for 4th quarter of FY15-16

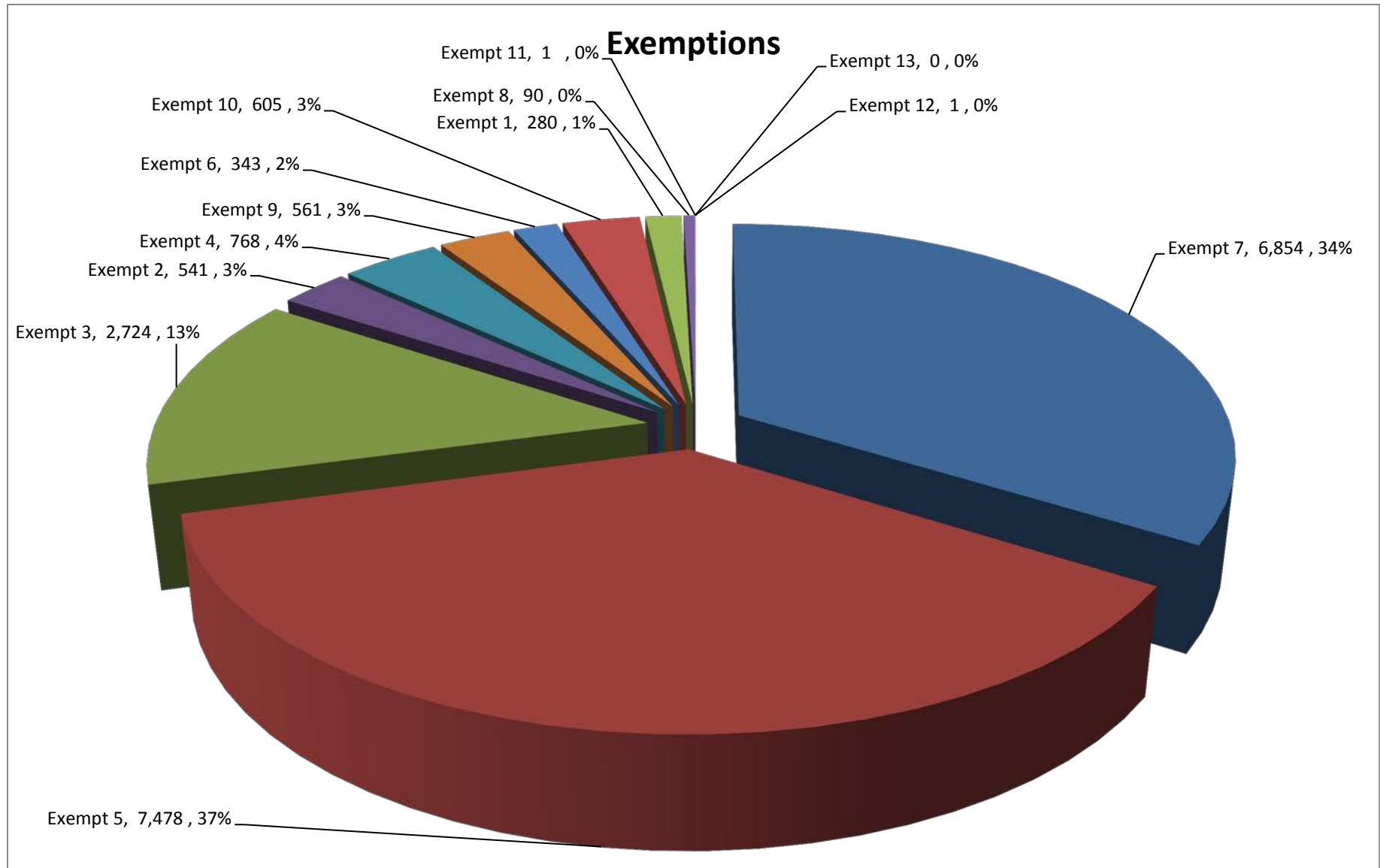
	% of Total Transfers	Total Transfers	Exempt Transfers	% of Total Exemptions	% of Transfers Exempted	1	2	3	4	5	6	7	8	9	10	11	12	13
Total	100.0%	59,078	20,246	100.00%	34.27%	280	541	2,724	768	7,478	343	6,854	90	561	605	1	1	0
CLARK	76.62%	45,234	14,214	70.21%	31.42%	210	233	1,819	597	5,751	220	4,604	4	435	339	1	1	0
WASHOE	11.06%	6,528	2,926	14.45%	44.82%	25	44	426	84	956	61	1,193	5	53	79	0	0	0
DOUGLAS	2.57%	1,518	500	2.47%	32.94%	4	7	69	8	104	17	251	2	5	33	0	0	0
NYE	2.43%	1,434	619	3.06%	43.17%	13	36	78	18	167	3	259	4	12	29	0	0	0
LYON	1.71%	1,007	416	2.05%	41.31%	6	20	65	17	120	10	131	2	17	28	0	0	0
ELKO	1.57%	925	316	1.56%	34.16%	3	10	64	13	105	15	75	4	4	23	0	0	0
CARSON CITY	1.10%	647	298	1.47%	46.06%	0	5	33	8	79	0	139	0	7	27	0	0	0
CHURCHILL	0.74%	439	232	1.15%	52.85%	5	66	53	2	57	2	35	0	7	5	0	0	0
HUMBOLDT	0.69%	407	241	1.19%	59.21%	8	60	14	8	31	6	78	3	6	27	0	0	0
WHITE PINE	0.31%	184	111	0.55%	60.33%	1	54	15	2	12	3	11	10	0	3	0	0	0
PERSHING	0.25%	149	64	0.32%	42.95%	0	1	26	1	10	0	10	9	6	1	0	0	0
STOREY	0.20%	121	65	0.32%	53.72%	5	1	7	1	24	0	23	0	3	1	0	0	0
LANDER	0.20%	118	46	0.23%	38.98%	0	1	10	1	20	2	8	2	0	2	0	0	0
LINCOLN	0.19%	111	56	0.28%	50.45%	0	1	7	3	20	1	18	1	4	1	0	0	0
MINERAL	0.18%	105	39	0.19%	37.14%	0	1	6	3	12	0	3	8	2	4	0	0	0
ESMERALDA	0.16%	93	76	0.38%	81.72%	0	1	30	1	8	1	7	27	0	1	0	0	0
EUREKA	0.10%	58	27	0.13%	46.55%	0	0	2	1	2	2	9	9	0	2	0	0	0

Per the tables and graphs under the heading “Tax Totals,” transactions in Washoe County and Clark County account for approximately 93.71% of the tax dollars. The above table indicates that transactions in Washoe County and Clark County account for approximately 87.68% of the total number of transfers. Transactions in the other 15 counties account for approximately 12.32% of the total number of transfers.

The following chart shows the number of exemptions by category for FY15-16.



The following chart shows the number of exemptions by category for the 4th quarter of FY15-16.



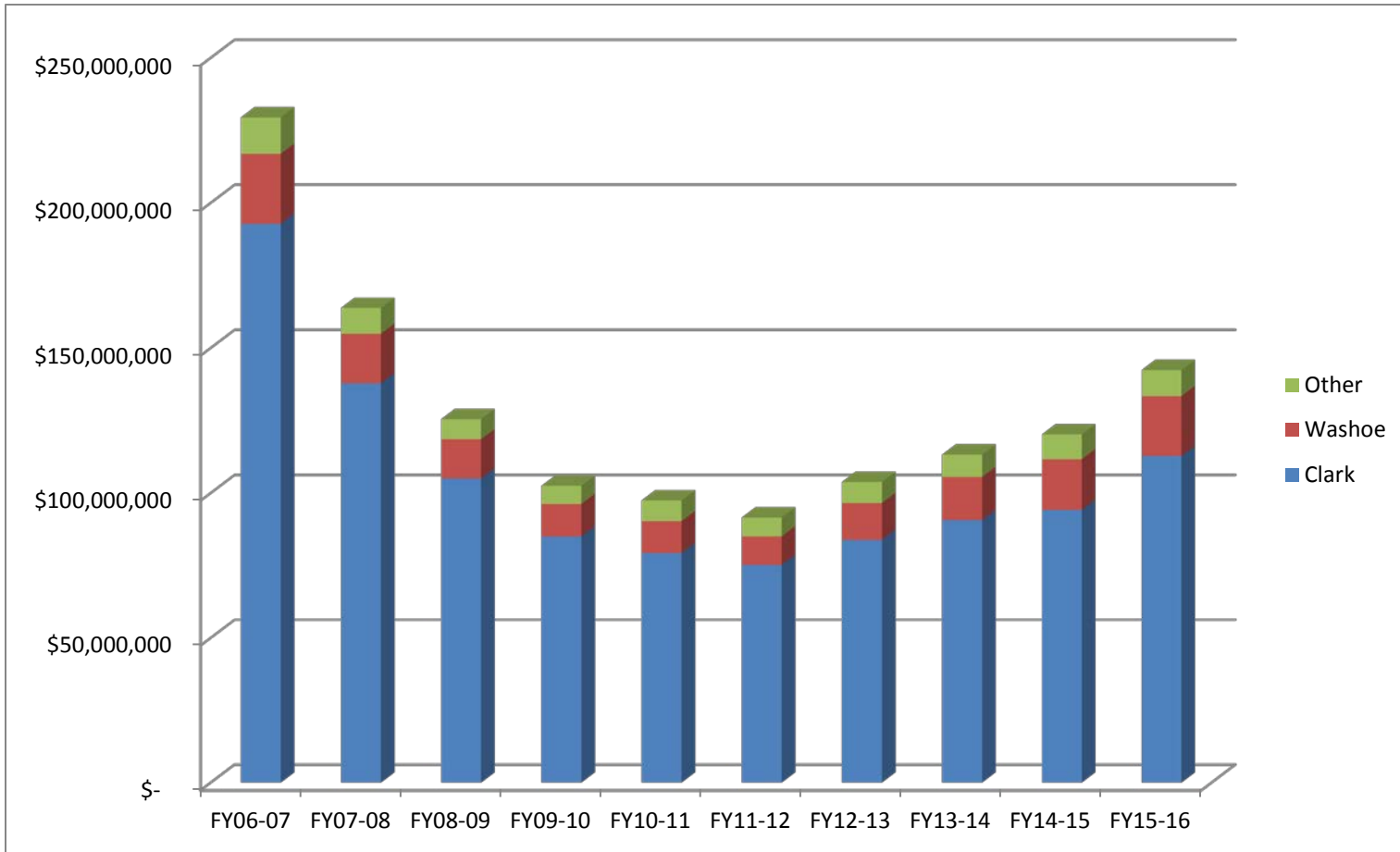
Historical Trends

The following table shows the tax for the last ten fiscal years¹² sorted by FY15-16 totals.

	FY06-07	FY07-08	FY08-09	FY09-10	FY10-11	FY11-12	FY12-13	FY13-14	FY14-15	FY15-16
Total	\$229,471,598.66	\$163,815,334.90	\$125,473,123.05	\$102,479,032.88	97,451,899.65	91,555,410.38	\$103,806,790.53	\$113,251,556.14	\$120,225,322.55	\$142,415,861.66
CLARK	\$192,759,296.24	\$137,797,728.78	\$104,987,657.80	\$85,006,222.45	79,337,410.50	75,173,556.50	\$83,853,906.75	\$90,636,710.40	\$94,168,621.05	\$112,731,935.01
WASHOE	\$24,162,347.55	\$17,115,622.20	\$13,573,497.00	\$11,257,946.06	10,943,230.05	\$9,910,474.93	\$12,686,613.60	\$14,885,138.14	\$17,482,779.25	\$20,731,955.45
DOUGLAS	\$3,064,226.75	\$2,401,438.10	\$1,695,928.65	\$1,714,878.45	\$1,780,599.60	\$1,574,651.35	\$2,237,118.00	\$2,508,009.85	\$2,507,451.50	\$2,650,769.65
LYON	\$2,280,528.90	\$1,351,396.80	\$1,363,978.20	\$1,154,696.40	\$1,183,072.80	\$941,914.35	\$1,074,019.05	\$1,366,253.85	\$1,407,088.80	\$1,573,053.30
CARSON CITY	\$1,842,732.45	\$989,119.95	\$788,195.75	\$881,450.70	\$685,290.45	\$826,474.35	\$950,829.75	\$1,022,137.35	\$1,118,584.35	\$1,268,476.95
ELKO	\$1,356,498.00	\$939,102.45	\$759,552.30	\$694,227.30	\$774,791.55	\$993,248.10	\$1,037,288.85	\$983,363.55	\$1,039,336.35	\$995,749.95
NYE	\$1,920,498.38	\$1,273,158.19	\$1,035,619.89	\$836,748.55	\$692,554.20	\$661,397.10	\$689,625.30	\$620,380.80	\$655,240.95	\$891,536.10
CHURCHILL	\$569,985.10	\$445,190.30	\$302,973.60	\$272,486.80	\$1,373,664.00	\$274,482.70	\$337,844.10	\$264,390.55	\$326,661.35	\$453,173.00
HUMBOLDT	\$423,116.94	\$384,624.02	\$264,691.06	\$220,888.23	\$210,432.30	\$390,138.45	\$396,148.35	\$331,244.55	\$444,299.70	\$316,017.00
STOREY	\$375,950.25	\$468,920.40	\$344,079.35	\$148,882.50	\$151,499.40	\$305,682.00	\$112,557.90	\$207,376.65	\$495,855.75	\$217,955.40
WHITE PINE	\$190,944.00	\$237,763.50	\$74,454.90	\$78,076.05	\$108,872.40	\$81,995.55	111198.75	\$111,664.80	\$101,031.45	\$174,396.30
LANDER	\$129,897.10	\$83,984.55	\$60,317.40	\$45,748.96	\$64,515.75	\$85,569.90	\$91,143.98	\$79,066.65	\$136,217.25	\$94,953.30
LINCOLN	\$149,180.85	\$99,202.35	\$76,683.75	\$44,089.50	\$55,649.10	\$59,239.05	\$59,434.05	\$42,098.55	\$115,796.85	\$90,784.20
PERSHING	\$103,010.70	\$107,388.45	\$85,031.70	\$41,377.05	\$51,902.55	\$102,137.10	\$89,704.90	\$61,206.60	\$162,805.50	\$86,219.25
EUREKA	\$47,199.75	\$41,513.16	\$15,730.65	\$21,411.83	\$13,417.95	\$119,802.15	\$29,653.65	\$32,365.75	\$29,782.35	\$74,856.60
MINERAL	\$57,979.35	\$53,036.10	\$30,669.60	\$47,759.40	\$15,646.80	\$39,089.70	\$40,969.50	\$28,048.80	\$26,947.05	\$58,026.15
ESMERALDA	\$38,206.35	\$26,145.60	\$14,061.45	\$12,142.65	\$9,350.25	\$15,557.10	\$8,734.05	\$72,099.30	\$6,823.05	\$6,004.05

¹² Amounts in table are calculated from Recorders Monthly Report; minor adjustments for refunds and timing differences are excluded.

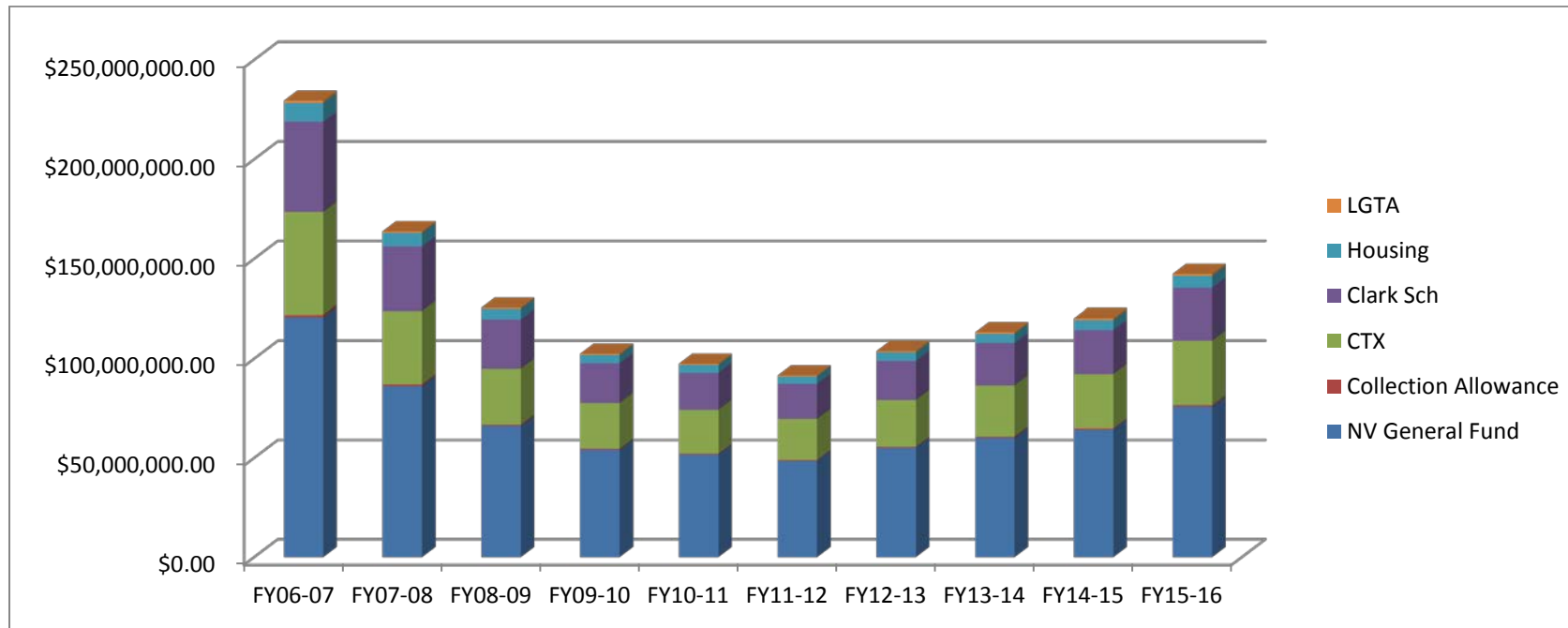
These trends are depicted graphically as follows.



The following table shows the distribution of the tax over the last ten fiscal years.¹³

	FY06-07	FY07-08	FY08-09	FY09-10	FY10-11	FY11-12	FY12-13	FY13-14	FY14-15	FY15-16
Total	\$229,471,598.66	\$163,815,334.90	\$125,473,123.05	\$102,479,032.88	\$97,451,899.65	\$91,555,410.38	\$103,806,790.53	\$113,251,556.14	\$120,225,322.55	\$142,415,861.66
NV General Fund	\$120,720,609.82	\$86,153,571.83	\$66,061,540.87	\$54,063,971.70	\$51,601,076.70	\$48,424,653.77	\$55,071,139.29	\$60,182,938.16	\$64,151,502.86	\$75,805,804.52
Collection Allow.	\$1,219,400.10	\$870,238.10	\$667,288.29	\$546,100.72	\$521,223.00	\$489,137.92	\$556,274.13	\$607,908.47	\$647,994.98	\$765,715.20
Consolidated Tax	\$51,590,004.20	\$36,817,765.74	\$28,231,427.72	\$23,104,261.41	\$22,051,742.18	\$20,694,296.48	\$23,534,674.91	\$25,719,204.34	\$27,415,172.16	\$32,395,642.96
Clark School Dist.	\$45,355,128.53	\$32,422,995.01	\$24,702,978.31	\$20,001,464.11	\$18,667,626.00	\$17,687,895.65	\$19,730,331.00	\$21,326,284.80	\$22,157,322.60	\$26,525,161.18
Low-Income Hous.	\$9,380,000.76	\$6,694,139.23	\$5,132,986.86	\$4,200,774.80	\$4,009,407.67	\$3,762,599.36	\$4,279,031.80	\$4,676,218.97	\$4,984,576.75	\$5,890,116.90
Local Gov't Tax Act	\$1,206,455.25	\$856,625.00	\$676,901.00	\$562,460.14	\$600,824.10	\$496,827.20	\$635,339.40	\$739,001.40	\$868,753.20	\$1,033,420.90

The following chart shows the distribution of the tax over the last ten years.



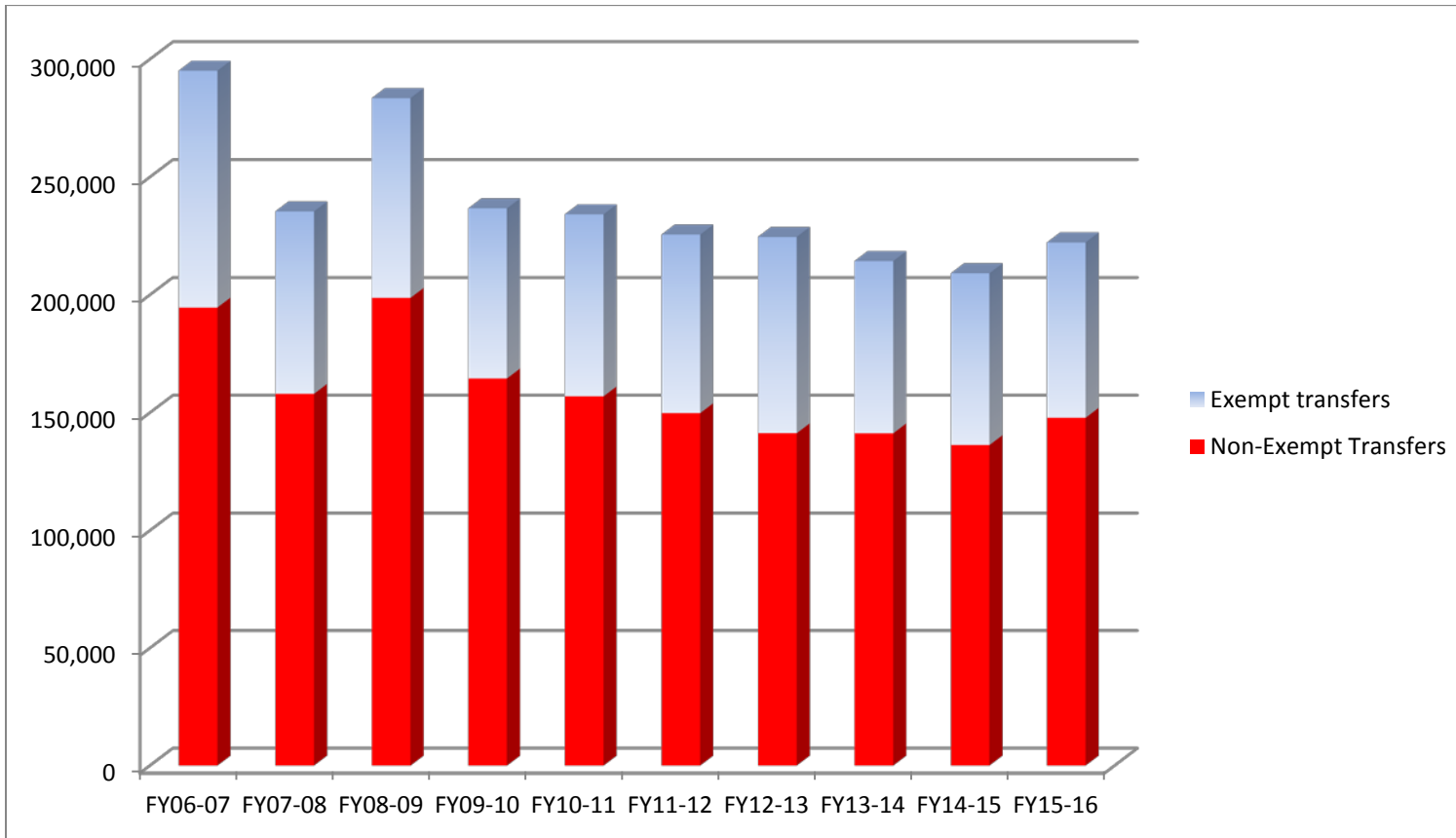
¹³ Amounts in table are calculated from Recorders Monthly Report; minor adjustments for refunds and timing differences are excluded.

Real Property Transfer Tax FY15-16 Report

The following table shows the total number of transfers and the exempt transfers over the last ten years sorted by the 2015-16 total transfers; highlighted cells indicated that data was not available for all or part of the periods.

	FY06-07		FY07-08		FY08-09		FY09-10		FY10-11		FY11-12		FY12-13		FY13-14		FY14-15		FY15-16	
	Total Trans	Exempt Trans	Total Trans	Exempt Trans	Total Trans	Exempt Trans	Total Trans	Exempt Trans	Total Trans	Exempt Trans	Total Trans	Exempt Trans	Total Trans	Exempt Trans	Total Trans	Exempt Trans	Total Trans	Exempt Trans	Total Trans	Exempt Trans
TOTAL	295,175	100,524	235,433	77,429	283,526	84,783	236,769	72,212	234,218	77,262	225,585	75,773	224,646	83,352	214,375	73,122	209,178	72,933	222,305	74,463
CLARK	233,345	81,864	187,925	54,962	239,143	64,371	190,504	52,570	188,531	56,145	178,268	54,857	176,144	60,095	165,692	52,051	159,886	51,293	172,564	52,257
WASHOE	26,773	6,663	21,313	10,404	20,378	9,113	22,460	9,178	23,231	10,207	23,412	10,125	24,001	11,619	23,701	10,329	22,964	10,588	24,352	11,138
DOUGLAS	7,244	2,776	6,765	2,490	5,734	2,272	6,100	2,096	5,512	2,120	6,497	2,106	6,268	2,325	6,524	1,921	6,268	2,068	5,801	1,934
NYE	8,048	-	4,611	1,972	4,550	2,114	4,453	1,990	3,245	1,969	3,233	1,964	3,554	2,049	4,051	2,053	5,390	2,253	4,682	2,190
LYON	4,459	2,418	2,994	1,808	3,553	1,637	3,530	1,525	3,583	1,639	3,558	1,470	3,591	1,628	3,417	1,458	3,773	1,543	3,602	1,587
ELKO	5,102	1,534	3,577	1,324	2,907	1,217	2,679	1,182	2,589	1,154	3,156	1,213	3,249	1,283	3,067	1,318	2,998	1,174	3,127	1,253
CARSON CITY	2,426	1,489	2,162	1,415	1,863	1,202	2,056	1,186	2,094	1,241	2,230	1,214	2,317	1,344	2,134	1,092	2,203	1,142	2,329	1,167
CHURCHILL	1,964	1,269	1,256	698	1,205	735	1,011	537	1,161	681	1,142	613	1,359	831	1,308	752	1,263	685	1,338	686
HUMBOLDT	1,608	623	1,204	554	1,277	592	1,202	555	1,296	655	1,033	729	683	652	1,162	552	1,131	570	1,085	537
PERSHING	725	308	757	318	713	325	630	241	866	275	712	289	876	269	716	283	777	320	705	315
WHITE PINE	790	393	656	346	508	288	496	299	509	294	521	301	558	320	595	355	556	328	664	382
LINCOLN	450	228	397	221	255	165	265	172	287	180	282	143	396	188	325	191	394	246	436	217
STOREY	565	337	455	284	401	246	390	202	353	177	361	172	397	202	395	176	435	184	428	222
LANDER	567	184	430	197	365	172	310	126	294	128	396	158	442	162	450	195	414	189	409	172
MINERAL	519	268	440	258	329	196	327	179	297	197	342	175	328	170	319	161	301	166	342	157
ESMERALDA	332	103	250	107	166	66	197	98	209	127	255	171	231	127	232	146	219	113	230	142
EUREKA	258	67	241	71	179	72	159	76	161	73	187	73	252	88	287	89	206	71	211	107

The following chart shows the number of exempt and non-exempt transfers over the last ten years.



Reconciliation

Pursuant to NAC 375.400, County Recorders must provide the Department the following information each month:

- Total number of deeds subject to RPTT during the prior month;
- Total taxes collected during the prior month;
- Total number of exemptions granted by type of exemption;
- Such other information that may be useful in coordinating the collection and administration of the taxes (under this category, a line item on the report form for the total collection allowance that may be retained by the county, based on the General Fund taxes collected during the prior month and the school district portion for Clark County)

Pursuant to NRS 375.023(3), County Treasurers must remit a portion of the amounts collected to the State Controller for distribution to various accounts in the State books and records. Counties retain a portion of the amount collected. See “Distribution of Tax” above for a complete explanation of the distribution.

The Department prepares a quarterly reconciliation of the tax. The Department prepares a workpaper with the expected distribution of the funds per the Recorder’s Report. The expected collection allowance is reconciled to the collection allowance reported by the Recorder. The expected distributions to the State, including CTX, General Fund, Low Income Housing, and LGTA amounts, are compared with the State Controller’s records and the County Treasurer remittance reports. Any discrepancies are investigated and brought to the attention of the County Recorder, County Treasurer, or State Controller, as needed. The expected Clark County School District portion is reconciled to the school district amount reported by the Recorder.

During the Department’s reconciliation process minor differences between the Recorder’s monthly report and the state reports are investigated, documented and resolved. The majority of differences are “timing differences” between periods that do not impact total tax. Occasionally, there are permanent differences such as refunds to taxpayers pursuant to NRS 375.150, NRS 375.290, NRS 375.310 or calculation errors that may impact total tax. Permanent differences amounted to less than 0.05% of the total reported amount and are not considered material for purposes of this report.

ADMINISTRATION OF THE REAL PROPERTY TRANSFER TAX

Authority and Oversight

The 20th Special Session of the Nevada State Legislature in 2003 instituted the passage of Senate Bill 8, which authorized an additional tax rate for the State General fund and gave the Department of Taxation administrative authority and oversight. The Department is required by NRS 375.019 to coordinate the collection and administration of the tax. The Nevada Tax Commission adopted regulations governing the Department's authority and oversight as well as the reporting of the Real Property Transfer Tax (RPTT) on March 1, 2004. Refer to NAC 375.400, 410, and 420.

Calculation and Collection of the Tax

The RPTT was originally imposed in 1968. The tax rates were established in NRS 375.020. NRS 375.020 has been amended from time to time. The current rate is \$0.65 per \$500 of value, or fraction thereof, for counties whose population is less than 700,000. The base rate in all counties of \$0.65 is segregated between county revenue¹⁴ (consolidated tax \$0.55) and State revenue¹⁵ (low-income housing \$0.10). For any county whose population is 700,000 or more, the rate is \$1.25 per \$500 of value or fraction thereof. The only county eligible for the higher rate at the current time is Clark County. The additional \$0.60 per \$500 of value, or fraction thereof, imposed in Clark County is dedicated to the Clark County School District fund for capital projects.

The Local Government Tax Act (LGTA) of 1991 provides an optional tax levy, if county commissioners approve an ordinance to impose a Real Property Transfer Tax, of up to 10 cents for each \$500 of value or fraction thereof. Currently, only Churchill County and Washoe County impose an additional \$0.10 levy.

NRS 375.026, passed by the Legislature in 2003, provides for the imposition of an additional levy of \$0.05 per \$500 of value or fraction thereof. The taxes so levied are for use in the Plant Industry Program as required by NRS 561.355. To date, no counties have levied any taxes for this program.

Finally, NRS 375.023 provides for the imposition of \$1.30 per \$500 of value or fraction thereof for the State General Fund.

¹⁴ The County Revenue is based on \$0.55 per \$500 of value, or fraction thereof, and is part of the Consolidated Tax.

¹⁵ The State Revenue is based on \$0.10 per \$500 of value, or fraction thereof, and is part of the low income housing program created pursuant to NRS 319.

The following table shows each component of RPTT and when it was implemented.

Entity	Component Type	Effective Date	Rate (per \$500)	Total Rate
Churchill County	County (now Consolidated Tax)	1/1/1968	\$0.55	
	Low Income Housing	7/1/1991	\$0.10	
	LGTA	7/1/1991	\$0.10	
	State General Fund	10/1/2003	<u>\$1.30</u>	\$2.05
Clark County	County (now Consolidated Tax)	1/1/1968	\$0.55	
	School District	8/1/1977	\$0.60	
	Low Income Housing	7/1/1991	\$0.10	
	State General Fund	10/1/2003	<u>\$1.30</u>	\$2.55
Washoe County	County (now Consolidated Tax)	1/1/1968	\$0.55	
	Low Income Housing	7/1/1991	\$0.10	
	LGTA	7/1/1991	\$0.10	
	State General Fund	10/1/2003	<u>\$1.30</u>	\$2.05
All other counties	County (now Consolidated Tax)	1/1/1968	\$0.55	
	Low Income Housing	7/1/1991	\$0.10	
	State General Fund	10/1/2003	<u>\$1.30</u>	\$1.95

Collection Allowance

Pursuant to NRS 375.023(4), counties are entitled to deduct and withhold a collection allowance for the cost of collecting the tax. Per the 2005 Legislative Session, all counties may deduct 1% of the State’s portion of the taxes collected.

The collection allowance is retained by the county and deducted from the amount remitted to the State.

Distribution of the Tax

All components of the Real Property Transfer Tax, net of the collection allowance, are transmitted to the State Controller, with two exceptions. The first exception is the Plant Industry Program. If and when any taxes are levied for the Plant Industry Program, they must be transmitted directly to the State Treasurer. The second exception is the school district component levied in Clark County, which is transmitted directly to the Clark County Treasurer for ultimate distribution to the School District.

NRS 375.070 requires the tax imposed by NRS 375.020 (the \$0.65 per \$500 of value of fraction thereof) to be transmitted to the State Controller at the end of each quarter. Some counties transmit on a monthly basis and in turn receive back a monthly distribution of the consolidated tax (CTX) component (the \$0.55 per \$500 or fraction thereof). The remaining Low-Income Housing component (\$0.10 per \$500 value or fraction thereof) is distributed to the State housing program.

The State Controller distributes the tax represented by the CTX component to the Local Government Tax Distribution Account, where it is combined with the proceeds of other taxes and becomes part of the Consolidated Tax distribution (CTX) administered by the Department of Taxation pursuant to NRS 360.660. The remaining \$0.10 of the \$0.65 is distributed by the State Controller to the account for Low-Income Housing, created pursuant to NRS 319.500.

The Real Property Transfer Taxes collected pursuant to the Local Government Tax Act (LGTA) are also transmitted to the State Controller and are distributed to the Intergovernmental Trust Fund which accrues interest. The real property transfer taxes are distributed back to the participating counties, along with the proceeds of other types of taxes collected pursuant to LGTA, by the Department of Taxation.

The taxes collected by counties on behalf of the State are distributed by the State Controller to the State General Fund. The taxes collected on behalf of the State, however, are required to be transmitted within 30 days after the end of the calendar quarter *during which the tax was collected*. (NRS 375.023(3)). For instance, taxes collected by the County Recorder in January must be remitted to the State Controller no later than April 30. Taxes collected in January may be remitted monthly as other components of the RPTT are transmitted, but cannot be remitted later than 30 days after the last day of the calendar quarter.

In all counties the County Treasurer or County Controller is currently responsible for transmitting the taxes to the State Controller, and the transmittal report must reflect the time period when the taxes were actually collected by the Recorder, not when the Treasurer or Controller received the monies from the Recorder. If the State conducts an audit, the period to be audited would be when the monies were first received from the taxpayer (“the collection period”). The collection period must balance to the transmittal reports.

Appendix A:

Quarter 1 Page 7 restated:

Number of Exemptions for 1st quarter and fiscal year to date FY15-16

	% of Total Transfers	Total Transfers	Exempt Transfers	% of Total Exemptions	% of Transfers Exempted by County	1	2	3	4	5	6	7	8	9	10	11	12	13
TOTAL	100.00%	56,864	19,257	100.00%		241	526	2,888	791	6,931	349	6,375	80	450	627	2	0	0
CLARK	77.21%	43,906	13,539	70.39%	30.84%	150	371	1,972	597	5,336	196	4,217	5	333	360	2	-	-
WASHOE	11.42%	6,495	2,915	15.16%	44.88%	65	42	406	102	877	79	1,200	0	61	83	-	-	-
DOUGLAS	2.79%	1,587	489	2.54%	30.81%	-	9	84	10	110	11	236	1	6	22	-	-	-
NYE	1.94%	1,106	580	3.02%	52.44%	8	29	96	29	126	6	241	10	5	30	-	-	-
LYON	1.59%	902	411	2.14%	45.57%	8	23	76	16	121	17	108	2	13	27	-	-	-
ELKO	1.42%	807	344	1.79%	42.63%	2	7	80	11	113	14	75	6	6	30	-	-	-
CARSON CITY	1.10%	624	318	1.65%	50.96%	-	10	46	12	64	3	152	-	5	26	-	-	-
CHURCHILL	0.48%	273	137	0.71%	50.18%	-	17	23	1	37	2	36	7	8	6	-	-	-
HUMBOLDT	0.41%	231	92	0.48%	39.83%	2	3	10	3	28	6	21	5	2	12	-	-	-
PERSHING	0.37%	208	89	0.46%	42.79%	4	1	30	3	17	0	16	12	3	3	-	-	-
WHITE PINE	0.27%	156	85	0.44%	54.49%	1	4	18	2	28	3	21	2	3	3	-	-	-
STOREY	0.22%	123	63	0.33%	51.22%	1	6	17	2	13	2	21	-	-	1	-	-	-
LINCOLN	0.21%	121	53	0.28%	35.54%	-	-	10	-	18	3	6	6	2	8	-	-	-
LANDER	0.20%	111	48	0.25%	43.24%	-	1	5	-	21	4	10	6	-	1	-	-	-
MINERAL	0.14%	82	40	0.21%	48.78%	-	1	10	2	12	1	3	-	-	11	-	-	-
ESMERALDA	0.12%	66	23	0.12%	34.85%	-	1	4	-	4	-	2	10	2	-	-	-	-
EUREKA	0.12%	66	31	0.16%	46.97%	-	1	1	1	6	2	10	8	1	1	-	-	-

Per the tables and graphs under the heading "Tax Totals," transactions in Washoe County and Clark County account for approximately 88.63% of the tax dollars. The above table indicates that transactions in Washoe County and Clark County account for approximately 85.55% of the total number of transfers. Transactions in the other 15 counties account for approximately 14.45% of the total number of transfers.

Quarter 2 Page 7:

Number of Exemptions for the fiscal year to date (FY15-16):

	% of Total Transfers	Total Transfers	Exempt Transfers	% of Total Exemptions	% of Transfers Exempted by County	1	2	3	4	5	6	7	8	9	10	11	12	13
Total	100.00%	110,091	36,760	100.00%		500	1,054	5,472	1,529	12,926	660	12,379	163	935	1,134	4	1	3
CLARK	77.63%	85,468	25,849	70.36%	30.24%	347	743	3,752	1,162	9,887	380	8,218	8	691	657	2	0	2
WASHOE	11.18%	12,312	5,593	15.22%	45.43%	107	110	765	187	1,682	148	2,295	0	134	163	1	1	0
DOUGLAS	2.74%	3,011	958	2.61%	31.82%	2	16	171	29	210	31	450	1	13	35	0	0	0
NYE	1.94%	2,138	1,061	2.89%	49.63%	13	50	161	50	239	10	454	17	8	58	0	0	1
LYON	1.59%	1,753	766	2.09%	43.70%	10	44	144	33	235	24	207	2	19	48	0	0	0
ELKO	1.37%	1,504	646	1.76%	42.95%	4	11	143	17	203	22	158	25	16	47	0	0	0
CARSON CITY	1.07%	1,181	618	1.68%	52.33%	2	12	81	18	148	5	305	0	9	37	1	0	0
CHURCHILL	0.51%	564	274	0.75%	48.58%	2	31	53	5	65	5	73	14	10	16	0	0	0
HUMBOLDT	0.42%	467	207	0.56%	44.33%	4	6	40	4	61	10	44	11	5	22	0	0	0
PERSHING	0.32%	357	147	0.40%	41.18%	5	3	44	6	30	0	25	24	5	5	0	0	0
WHITE PINE	0.27%	294	147	0.40%	50.00%	2	6	30	4	48	7	36	3	4	7	0	0	0
LINCOLN	0.21%	235	104	0.28%	44.26%	0	2	15	1	27	3	20	8	14	14	0	0	0
STOREY	0.21%	226	117	0.32%	51.77%	1	11	27	5	27	4	38	0	0	4	0	0	0
LANDER	0.18%	199	86	0.23%	43.22%	0	3	12	1	28	8	21	6	2	5	0	0	0
MINERAL	0.14%	157	80	0.22%	50.96%	0	3	19	5	18	1	13	6	1	14	0	0	0
EUREKA	0.11%	120	58	0.16%	48.33%	0	2	8	2	11	2	16	14	2	1	0	0	0
ESMERALDA	0.10%	105	49	0.13%	46.67%	1	1	7	0	7	0	6	24	2	1	0	0	0

Quarter 3 Page 7:

Number of Exemptions for the fiscal year to date (FY15-16):

	% of Total Transfers	Total Transfers	Exempt Transfers	% of Total Exemptions	% of Transfers Exempted	1	2	3	4	5	6	7	8	9	10	11	12	13
Total	100.00%	163,227	54217	100.00%		716	1486	8052	2257	18893	972	18451	241	1399	1740	4	2	4
CLARK	78.01%	127330	38043	70.17%	29.88%	516	1049	5510	1684	14423	551	12285	12	1022	985	2	1	3
WASHOE	10.92%	17824	8212	15.15%	46.07%	124	154	1163	289	2431	228	3382	1	180	258	1	1	0
DOUGLAS	2.62%	4283	1434	2.64%	33.48%	3	23	241	42	326	46	660	1	25	67	0	0	0
NYE	1.99%	3248	1571	2.90%	48.37%	17	67	228	71	370	18	657	24	22	96	0	0	1
LYON	1.59%	2595	1171	2.16%	45.13%	16	57	211	56	339	30	352	3	34	73	0	0	0
ELKO	1.35%	2202	937	1.73%	42.55%	9	21	201	27	291	38	236	27	23	64	0	0	0
CARSON CITY	1.03%	1682	869	1.60%	51.66%	4	15	112	25	199	7	419	0	30	57	1	0	0
CHURCHILL	0.55%	899	454	0.84%	50.50%	4	36	113	14	104	7	115	17	14	30	0	0	0
HUMBOLDT	0.42%	678	296	0.55%	43.66%	4	8	52	10	91	17	58	13	7	36	0	0	0
PERSHING	0.34%	556	251	0.46%	45.14%	8	4	59	9	54	1	45	45	15	11	0	0	0
WHITE PINE	0.29%	480	271	0.50%	56.46%	2	15	51	5	95	8	68	13	4	10	0	0	0
LINCOLN	0.20%	325	161	0.30%	49.54%	0	7	20	4	42	3	41	10	14	20	0	0	0
STOREY	0.19%	307	157	0.29%	51.14%	3	15	30	8	39	5	50	0	0	7	0	0	0
LANDER	0.18%	291	126	0.23%	43.30%	2	7	19	1	39	9	30	10	3	6	0	0	0
MINERAL	0.15%	237	118	0.22%	49.79%	0	3	23	9	27	1	27	9	1	18	0	0	0
EUREKA	0.09%	153	80	0.15%	52.29%	3	3	11	3	14	3	18	21	3	1	0	0	0
ESMERALDA	0.08%	137	66	0.12%	48.18%	1	2	8	0	9	0	8	35	2	1	0	0	0

Quarter 3 Page 8:

Number of Exemptions for 3rd quarter FY15-16

	% of Total Transfers	Total Transfers	Exempt Transfers	% of Total Exemptions	% of Transfers Exempted	1	2	3	4	5	6	7	8	9	10	11	12	13
Total	100.00%	39,486	17,457	100.00%		216	432	2,580	728	5,967	312	6,072	78	464	606	0	1	1
CLARK	70.69%	27,912	12,194	69.85%	43.69%	169	306	1,758	522	4,536	171	4,067	4	331	328	0	1	1
WASHOE	13.96%	5,512	2,619	15.00%	47.51%	17	44	398	102	749	80	1,087	1	46	95	0	0	0
NYE	3.57%	1,410	510	2.92%	36.17%	4	17	67	21	131	8	203	7	14	38	0	0	0
DOUGLAS	3.22%	1,272	476	2.73%	37.42%	1	7	70	13	116	15	210	0	12	32	0	0	0
LYON	2.13%	842	405	2.32%	48.10%	6	13	67	23	104	6	145	1	15	25	0	0	0
ELKO	1.77%	698	291	1.67%	41.69%	5	10	58	10	88	16	78	2	7	17	0	0	0
CARSON CITY	1.27%	501	251	1.44%	50.10%	2	3	31	7	51	2	114	0	21	20	0	0	0
CHURCHILL	0.85%	335	180	1.03%	53.73%	2	5	60	9	39	2	42	3	4	14	0	0	0
HUMBOLDT	0.53%	211	89	0.51%	42.18%	0	2	12	6	30	7	14	2	2	14	0	0	0
PERSHING	0.50%	199	104	0.60%	52.26%	3	1	15	3	24	1	20	21	10	6	0	0	0
WHITE PINE	0.47%	186	124	0.71%	66.67%	0	9	21	1	47	1	32	10	0	3	0	0	0
LANDER	0.23%	92	40	0.23%	43.48%	2	4	7	0	11	1	9	4	1	1	0	0	0
LINCOLN	0.23%	90	57	0.33%	63.33%	0	5	5	3	15	0	21	2	0	6	0	0	0
STOREY	0.21%	81	40	0.23%	49.38%	2	4	3	3	12	1	12	0	0	3	0	0	0
MINERL	0.20%	80	38	0.22%	47.50%	0	0	4	4	9	0	14	3	0	4	0	0	0
EUREKA	0.08%	33	22	0.13%	66.67%	3	1	3	1	3	1	2	7	1	0	0	0	0
ESMERALDA	0.08%	32	17	0.10%	53.13%	0	1	1	0	2	0	2	11	0	0	0	0	0