



NEVADA GAMING CONTROL BOARD

Overview of Enforcement's Role & Organization

Cannabis Compliance Board Advisory Panel
February 15, 2019

Chief Karl Bennison
Enforcement Division

This presentation is for educational purposes only. Opinions or points of view expressed in this presentation represent the view of the presenter, and does not necessarily represent the official position or policies of the Nevada Gaming Control Board or the Nevada Gaming Commission. Nothing in this presentation constitutes legal advice. The individuals appearing in this presentation, if any, are depicted for illustrative purposes only and are presumed innocent until proven guilty in a court of law.

ENFORCEMENT DIVISION OUTLINE

- Role
- Organization
- Functional Areas
- Staff
- Operational Methods
- Questions

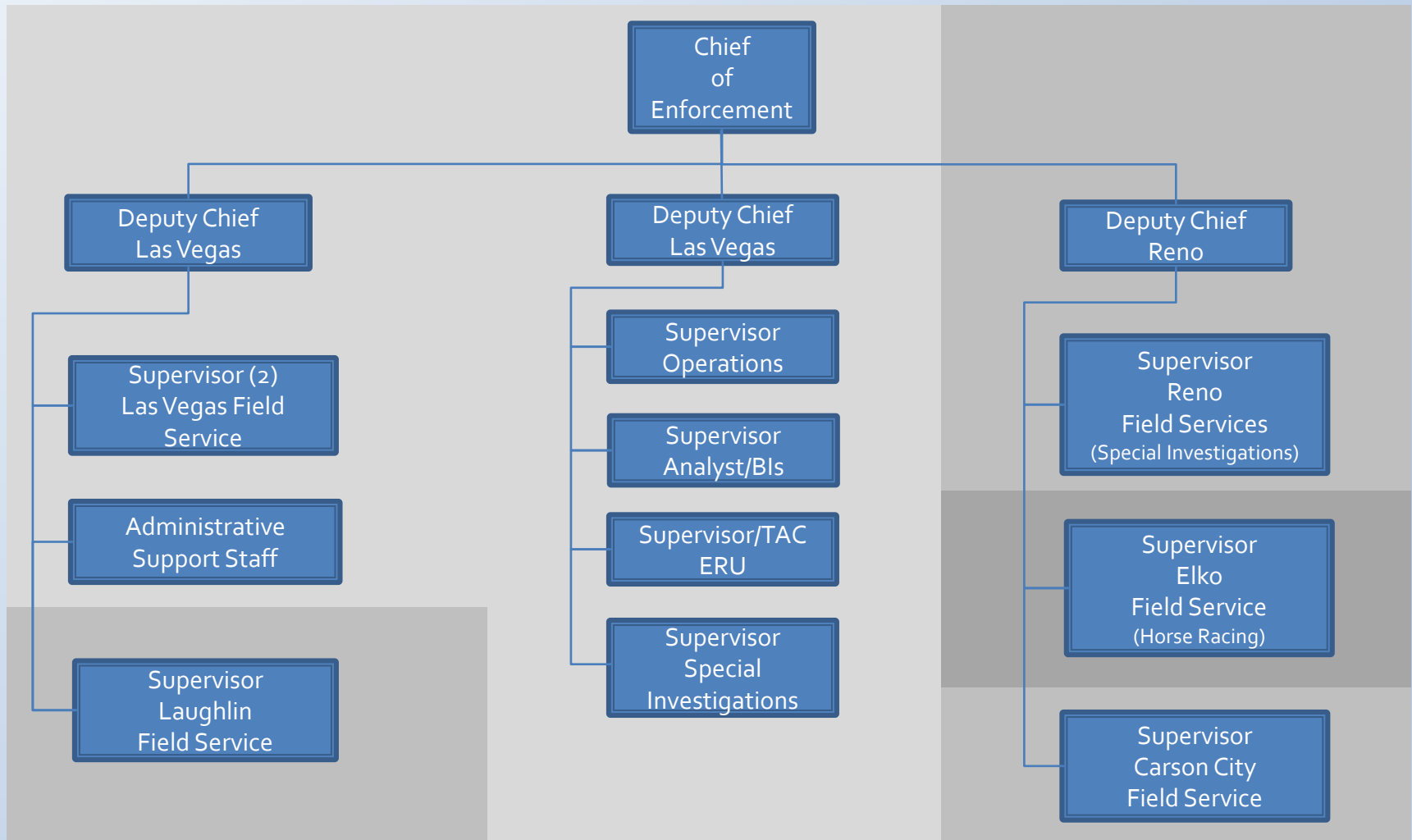
ENFORCEMENT DIVISION ROLE



- Law Enforcement (NRS 289.360 and 463.140)
 - Criminal Investigations
 - Arrests
 - Intelligence Analysis
- Regulation Enforcement (NRS 463.140)
 - Regulatory Violation Investigations
 - Regulatory Inspections
- Disputes and Complaints (NRS 463.362)
- Club Venues (463.15999)
- Compacts - Tribal Casinos
- Board and Commission Member Protection (NRS 289.360)
- Administrative Approvals
- Charitable Gaming (NRS 462 and 463)
- Gaming Employee Screening and Background Investigations (NRS 463.335)
- Excluded Persons Candidate Investigation/Nomination (NRS 463.151)
- Horse Racing (NRS 466)



ENFORCEMENT DIVISION ORGANIZATION



FIVE OFFICE LOCATIONS/APPROX. 90 CERTIFIED PEACE OFFICERS AND 30 CLASSIFIED ADMIN STAFF

ENFORCEMENT DIVISION

FUNCTIONAL AREAS

- Field Services (patrol)
- Operations (administrative approvals)
- Analyst (intel and statistical tracking)
- Background Investigations (gaming employees)
- Special Investigations (criminal and regulatory violations)
- Employee Registration Unit/Dispatch

FIELD SERVICES - PATROL

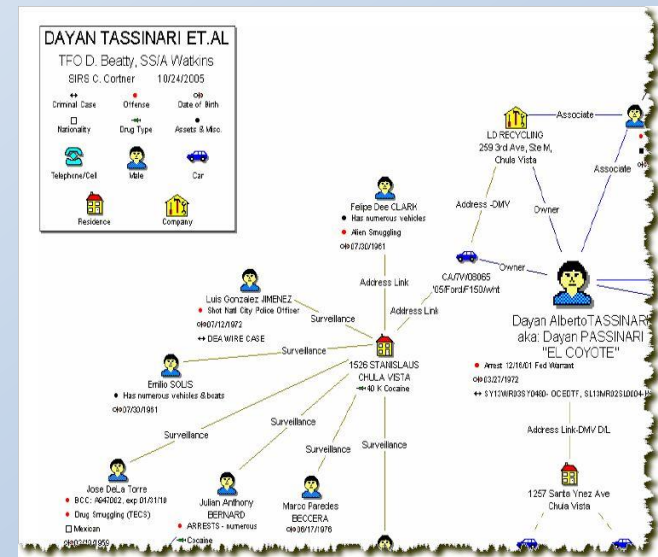
- Respond to Calls for Service
 - Criminal (minors gambling, cheating at gambling, embezzlements, etc.)
 - Dispute Investigation
 - Complaints
- Regulatory Inspections
- Regulatory Investigations (apparent violation of any regulation, including unsuitable method of operations (Reg 5.011 Grounds for disciplinary action) and minimum internal control standards violations)
- Conduct Observations (criminal activity, minor gambling or regulatory violations)
- Board and Commission Meeting Security

OPERATIONS

- Gaming Chip Approvals
- New Games and Modifications
- Charitable Raffles/Lotteries
- Gaming Device Tracking
- Surveillance Inspections and Waivers
- Evidence Vault
- Sports Book Rules and “other event” Wagering Approvals
- Contests

ANALYST UNIT/FILES

- Intel Sharing and Gathering
- Intel/Trend Analysis
- Track Agency Assists
- Case & Document Processing/Storing/Sealing
- Review Suspicious Transaction and Financial/Betting Transaction Reports
- Generate Reports – performance, statistics, etc.



BACKGROUND INVESTIGATIONS

- Gaming employee application screening (includes club venue employees)
- Conduct Background Investigations
- Attend Hearings



SPECIAL INVESTIGATIONS

- Lengthy and/or Complex Criminal and Regulatory Investigations
- Surveillance Operations (vehicle, static and on foot)
- Club Venue Compliance Checks and Targeted Criminal Undercover Operations
- Task Force Participation (FBI Cyber Crimes, IRS Financial Crimes, US Marshal Fugitive, etc.)
- Intelligence Reports
- Excluded Persons Nominations
- Agency Assists (local, state, federal and international)
- Cyber Crime Investigations

EMPLOYEE REGISTRATION UNIT/DISPATCH

- Process Gaming Employee Applications and Fingerprint Returns
- Input Certain Casino Financial Transaction and Personnel Related Reports
- Answer Employee Registration Related Questions
- Answer Main Phone Lines (24/7) and Route to Appropriate Section/Office
- Run Criminal History and Warrant Requests

STAFF

- Classified – Administrative Assistants
- Unclassified
 - Agents
 - POST Certified Peace Officers
 - Training – POST Certified Academy, Gaming Academy, FTO and In-Service
 - Senior Agents – in charge of shifts or small sections
 - Special Agents – hold staff positions or are in charge of Special Investigation squads
 - Supervisors – Oversee offices or units
 - Deputy Chiefs – Oversee multiple offices or units
 - Chief

OPERATIONAL METHODS

- The GCB is not a uniformed agency
- Board agents identify themselves only when necessary
- Overt Work
 - Handling in-custody arrests
 - Investigating disputes
- Covert Work
 - Unlicensed gaming, stings, club venue compliance, gaming, etc.
 - Online Investigations
- Proactive and Reactive
- Inspections – Announced and Unannounced

QUESTIONS

Karl Bennison
Chief
Enforcement Division
Nevada Gaming Control Board

