



**STATE OF NEVADA
DEPARTMENT OF TAXATION**

Web Site: <https://tax.nv.gov>

1550 College Parkway, Suite 115
Carson City, Nevada 89706-7937
Phone: (775) 684-2000 Fax: (775) 684-2020

RENO OFFICE
4600 Kietzke Lane
Building L, Suite 235
Reno, Nevada 89502
Phone: (775) 687-9999
Fax: (775) 688-1303

BRIAN SANDOVAL
Governor
JAMES DEVOLLD
Chair, Nevada Tax Commission
WILLIAM D. ANDERSON
Executive Director

LAS VEGAS OFFICE
Grant Sawyer Office Building, Suite 1300
555 E. Washington Avenue
Las Vegas, Nevada 89101
Phone: (702) 486-2300 Fax: (702) 486-2373

HENDERSON OFFICE
2550 Paseo Verde Parkway, Suite 180
Henderson, Nevada 89074
Phone: (702) 486-2300
Fax: (702) 486-3377

Contact: Bill Anderson, Executive Director
(775) 684-2060
andersonb@tax.state.nv.us

Stephanie Klapstein, Public Information Officer
(775) 684-2199
sklapstein@tax.state.nv.us

AUGUST SALES & USE TAX REVENUE STATISTICS NEWS RELEASE

November 14, 2018

**Nevada taxable sales still growing, total \$5.03 billion in August,
up 5.3 percent from last year**

Statement from Bill Anderson, Executive Director, Nevada Department of Taxation

August gave another strong showing of taxable sales across Nevada, which were up 5.3 percent over last August for a total of \$5.03 billion for the month. For July and August—the first two months of the fiscal year—five categories made up about half of all statewide taxable sales. Food services and drinking places maintains the top category by volume and saw total sales of \$1.80 billion in those two months, followed by motor vehicle and parts dealers at \$1.29 billion. In terms of the categories that have seen the most growth so far this fiscal year, both miscellaneous store and non-store retailers each are up about 24 percent over the same period last year. Fifteen of Nevada's 17 counties are up through August compared to last year. Clark County, which makes up close to three-quarters of the taxable sales in the state, is up 7.6 percent over the same period last year. Washoe, the second largest county for taxable sales by volume, is up 2.2 percent for the period. Nye and Storey Counties both lag behind compared to their taxable sales totals for the same period last year. Ten rural counties continue to see growth in the double digits so far this fiscal year. Collections for the state general fund portion of sales tax totaled \$99.7 million for August, up 6 percent from last year. The takeaway for August's taxable sales numbers is that, now at 98 months of consecutive growth, Nevada is still on the upward swing for this economic indicator.

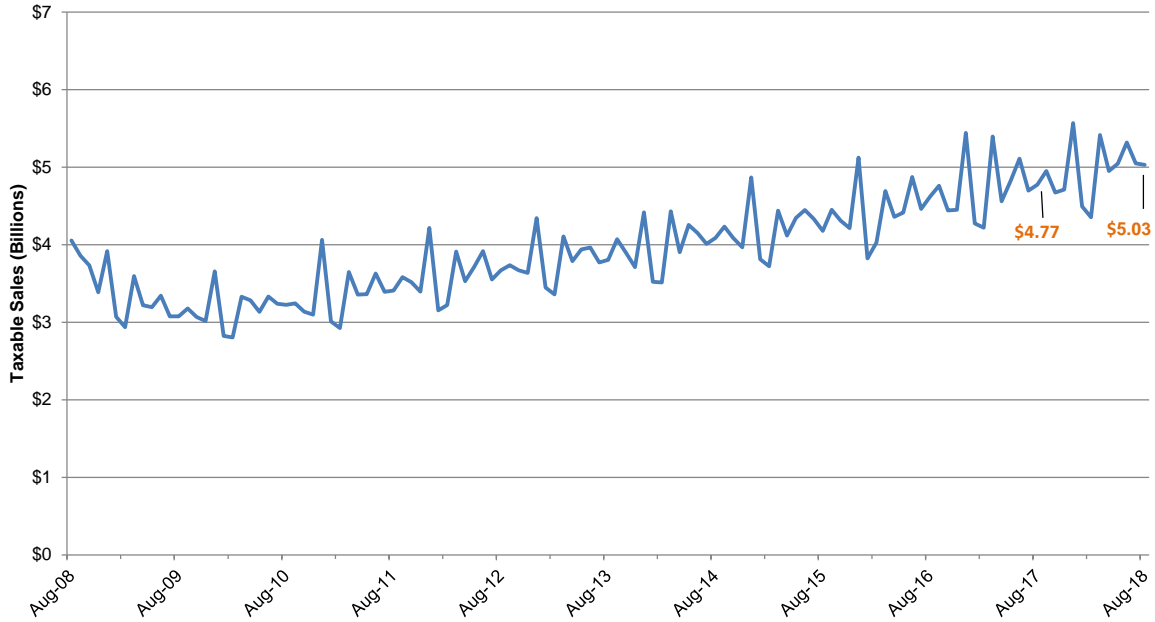
Highlights

- Total taxable sales for August were \$5.03 billion, a 5.3 percent increase over August 2017
- Nine of the 10 top sales categories by volume are up through August for this fiscal year compared to last; Food services and drinking places is the largest category with total taxable sales of \$1.80 billion fiscal year to date; Miscellaneous store and non-store retailers categories grew the most, both up about 24 percent for the period compared to last year; Clothing and clothing accessories stores as a category is down slightly for the period
- Fifteen of Nevada's 17 counties have experienced growth in taxable sales through August of this fiscal year compared to last; Clark is up 7.6 percent and Washoe is up 2.2

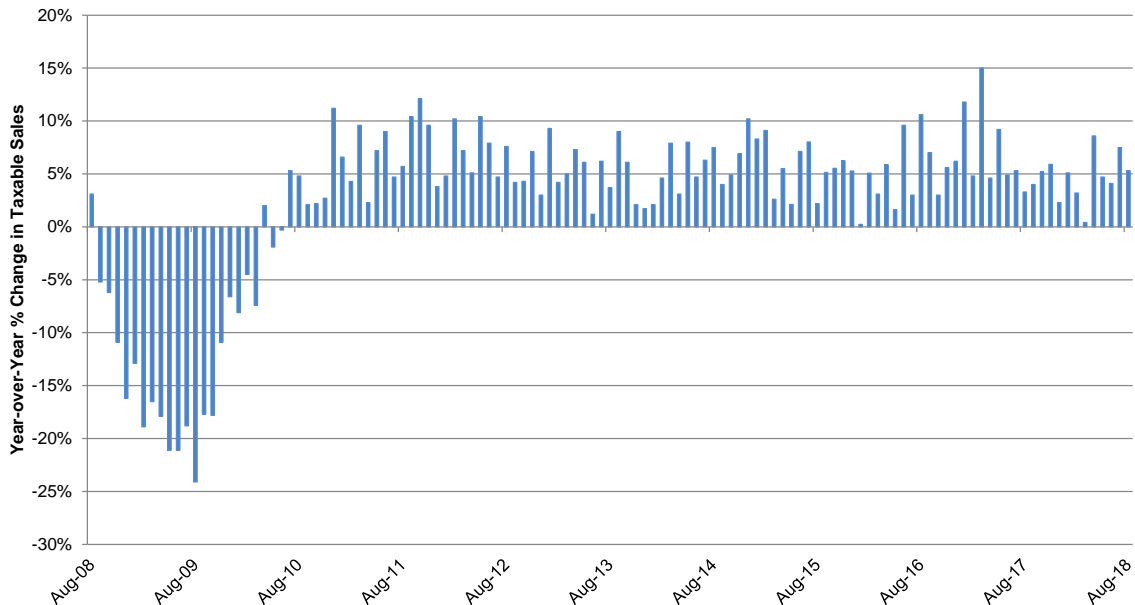
percent for the period; Nye and Storey Counties are down for the period; Ten rural counties have seen growth in the double digits for the period: Churchill, Douglas, Elko, Eureka, Humboldt, Lander, Lincoln, Mineral, Pershing, and White Pine

- The 2 percent state portion of sales and use taxes that goes to the General Fund totaled \$99.70 million for August and was up 6 percent from the same month last year

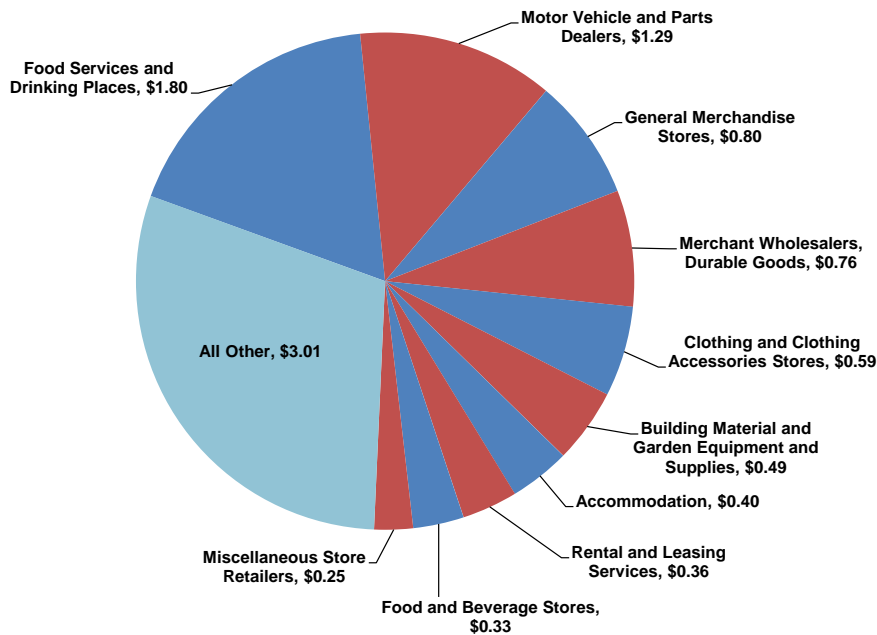
Taxable sales were \$5.03B in August, up from \$4.77B a year ago



August marks 98 straight months of taxable sales growth; Up 5.3% vs. 2017

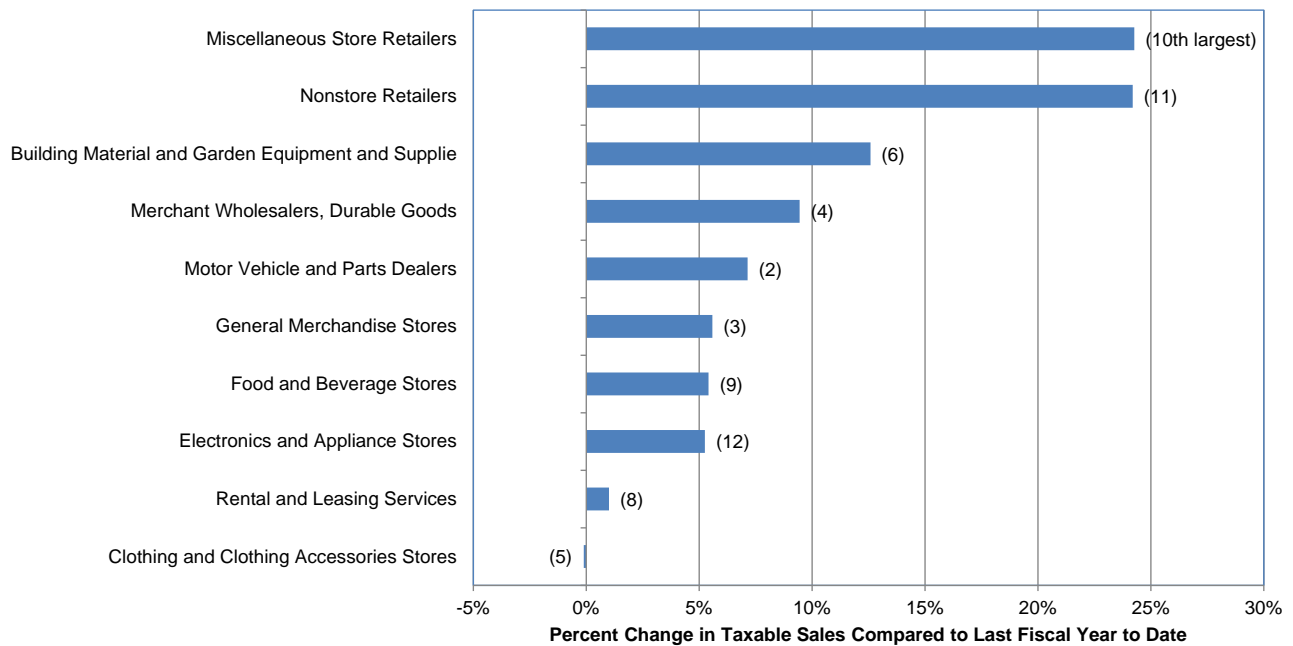


**The top five categories make up half of statewide taxable sales;
 Food services and drinking places maintains top spot with \$1.80B in taxable sales through August**



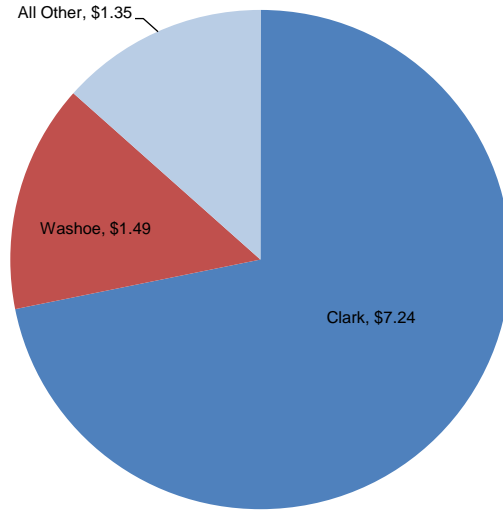
Taxable Sales FYTD (Billions)

Miscellaneous and non-store retailers see largest year-to-date gains, both up 24 percent from the same period last year



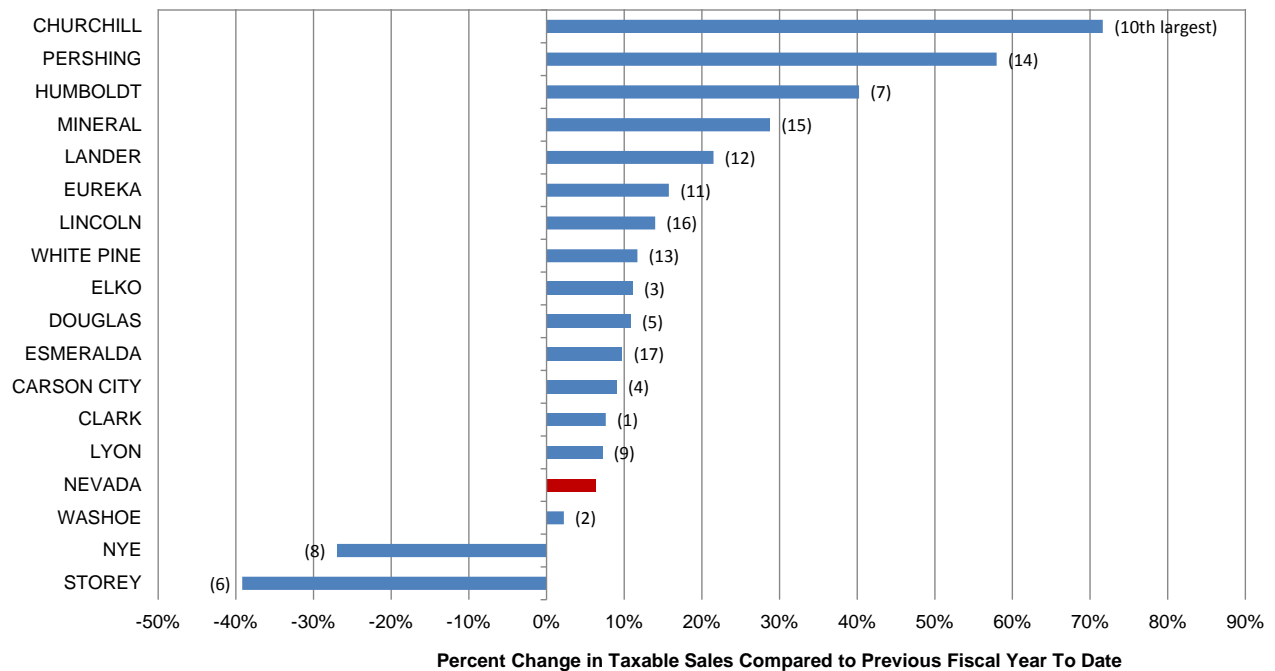
* Food Services/Drinking Places and Accommodation categories have been excluded from this chart due to business changing NAICS categories that resulted in substantial over-the-year decrease/increase for these categories that is unrelated to economic activity

Clark County contributes about 72 percent of statewide taxable sales; Washoe almost 15 percent

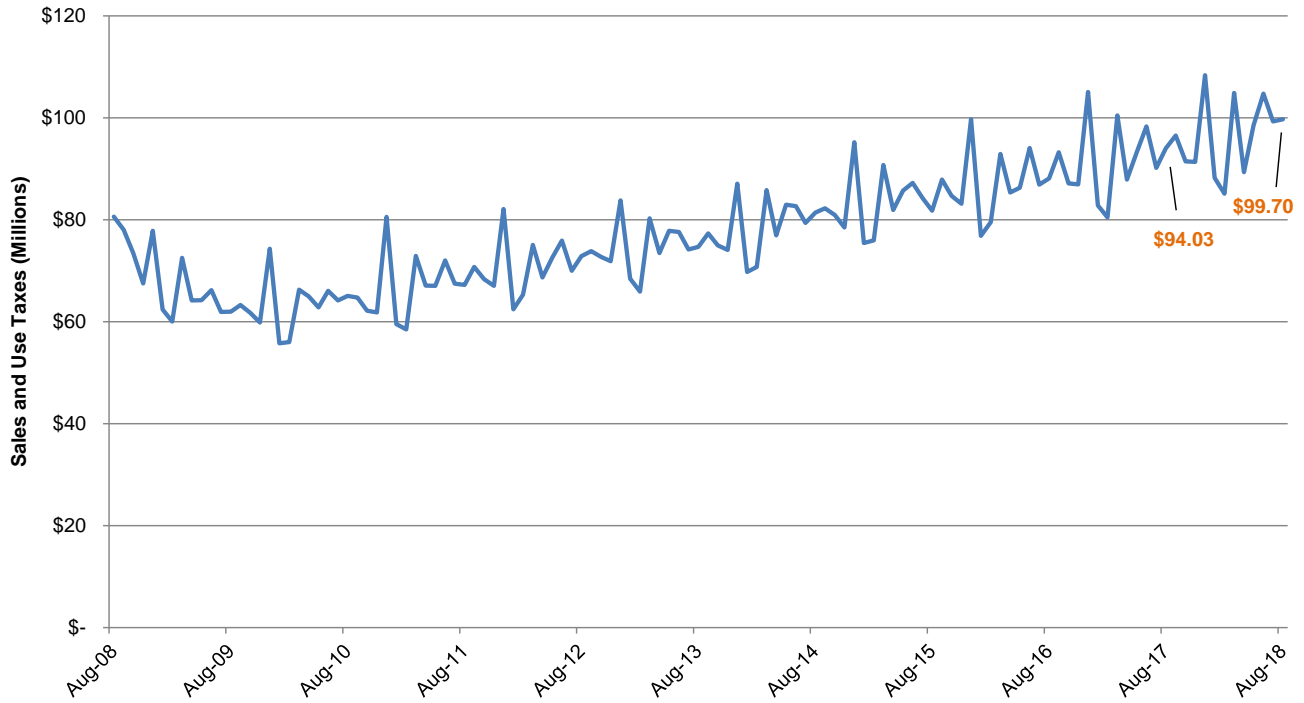


Taxable Sales FYTD (Billions)

Fifteen counties see growth through August; Several rural counties continue to see growth in the double digits



**General Fund sales tax collections = \$99.70M vs. \$94.03M a year ago;
Up 6 percent over last August**



For more information, visit the Department's website at:
https://tax.nv.gov/Publications/Monthly_Press_Release/

###